

# 330F

## Hydraulic Excavator



### Engine

|                            |                  |
|----------------------------|------------------|
| Engine Model               | Cat® C7.1 ACERT™ |
| Power – ISO 14396 (metric) | 178 kW (242 PS)  |
| Power – ISO 9249 (metric)  | 175 kW (238 PS)  |

### Drive

|                      |          |
|----------------------|----------|
| Maximum Travel Speed | 5.1 km/h |
| Maximum Drawbar Pull | 247 kN   |

### Weight

|                          |           |
|--------------------------|-----------|
| Minimum Operating Weight | 28 293 kg |
| Maximum Operating Weight | 29 753 kg |

**The 330F is built to keep your production numbers up and your owning and operating costs down.**

*The machine's C7.1 ACERT engine not only meets EU Stage IV emission standards, but it does so with all the power, fuel efficiency, and reliability you need to be successful.*

*Where the real power comes in is through Caterpillar's unparalleled systems integration and state-of-the-art hydraulic system. You can literally move tons of material all day long with tremendous speed and precision.*

*When you add a quiet operator environment that keeps you comfortable and productive, easy-to-reach service points that make routine maintenance simple and fast, and multiple Cat work tools that help you take on a variety of tasks with just one machine, you simply won't find a better, more efficient 30-ton excavator.*

*If productivity, comfort, versatility, and fuel efficiency are what you want, you need a 330F in your fleet.*

**Contents**

|                               |    |
|-------------------------------|----|
| Easy to Operate .....         | 4  |
| Fuel Efficient .....          | 6  |
| Durable Structures .....      | 8  |
| Durable Linkages .....        | 9  |
| Reliable and Productive ..... | 10 |
| Serviceable .....             | 12 |
| Safe Work Environment .....   | 13 |
| Versatile .....               | 14 |
| Integrated Technologies ..... | 16 |
| Sustainable .....             | 18 |
| Complete Customer Care .....  | 18 |
| Specifications .....          | 19 |
| Standard Equipment .....      | 33 |
| Optional Equipment .....      | 34 |
| Notes .....                   | 35 |





**CAT**  
330F

# Easy to Operate

Comfort and convenience to keep you productive all shift long



## A Safe, Quiet Cab

The ROPS-certified cab contributes to your comfort thanks to special viscous mounts and special roof lining and sealing, that limit vibration and unnecessary sound. Operators will enjoy the quietness and comfort of the all new cab.

## Excellent Ergonomics

Wide seats with air suspension and heat/cooling options, include a reclining back, upper and lower slide adjustments, and height and tilt angle adjustments to meet your needs for maximum comfort.

The fully automatic climate control system keeps operators comfortable and productive all day long in either hot or cold weather.

Storage spaces are located in the front, rear, and side consoles of the cab. A drink holder accommodates a large mug, and a shelf behind the seat stores large lunch or toolboxes.

Power supply sockets are available for charging your electronic devices like an MP3 player, a cell phone, or even a tablet.

## Controls Just for You

The right and left joystick consoles can be adjusted to improve your comfort and productivity during the course of a day. The right joystick features a button that will reduce engine speed when you are not working to help save fuel. Touch it once and speed reduces; touch it again and speed increases for normal operation.



## Easy to Navigate Monitor

The new LCD monitor is easy to see and navigate. Not only can it memorize up to 10 different work tools, it's also programmable in up to 44 languages to meet today's diverse workforce. The monitor clearly displays critical information you need to operate efficiently and effectively. Plus it projects the image from the standard rearview camera to help you see what's going on around you so you can stay safely focused on the job at hand.



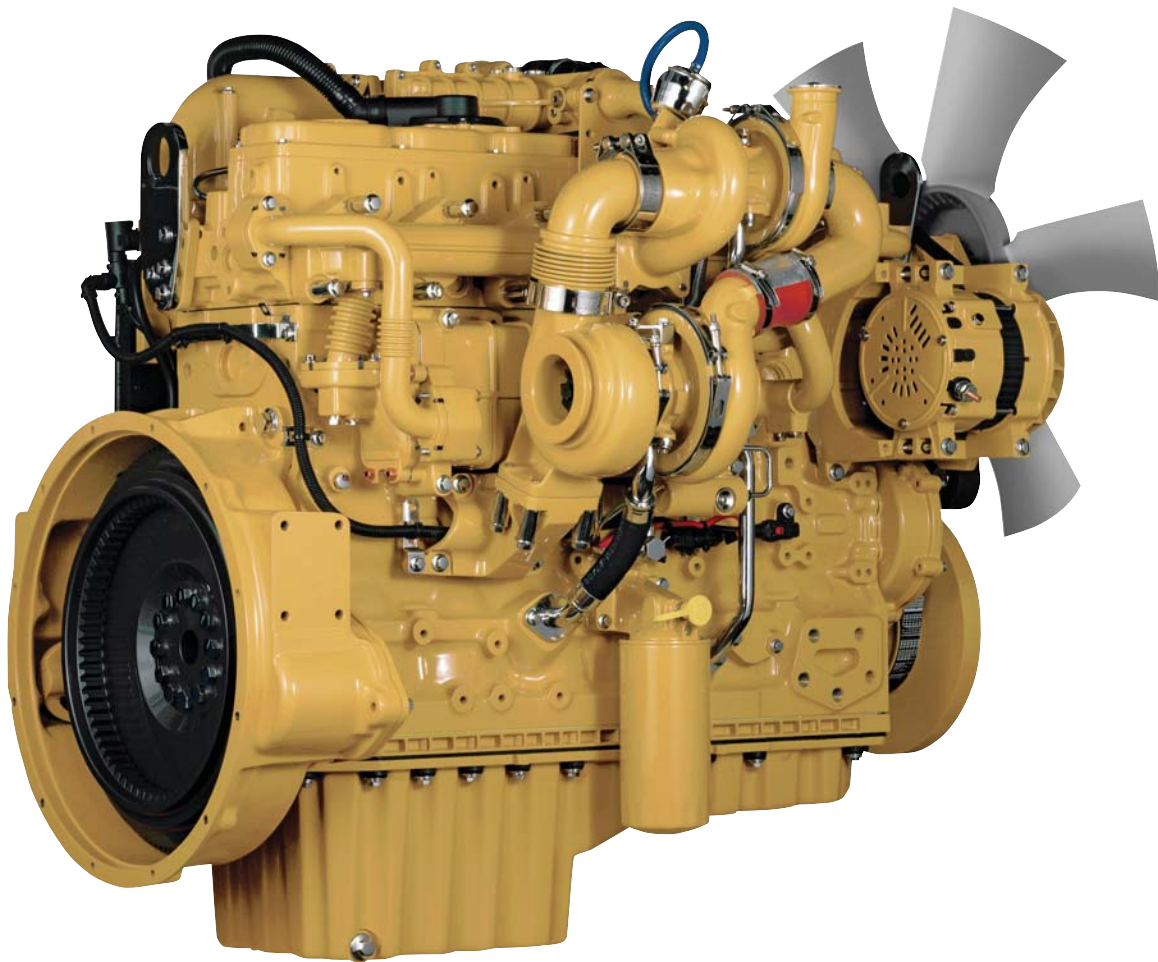
## Fuel Efficient

Powerful and fuel efficient to meet your expectations

### Fuel Savers That Add Up

The 330F consumes less fuel than the previous series model 329E, and the automatic engine speed control contributes by lowering rpm when the machine doesn't need it for work.

Automatic engine idle shutdown turns the engine off when it's been idling for more than a specified amount of time that you can set through the monitor. You also have a choice of two power modes – standard or eco modes. Simply change between modes through the console switch panel to meet the work needs in front of you. Collectively, all of these benefits add up to reduced fuel consumption, reduced exhaust and sound emissions, reduced repair and maintenance costs, and increased engine life for you.



## Proven Technology

Every Stage IV ACERT engine is equipped with a combination of proven electronic, fuel, air, and aftertreatment components. Applying these time-tested technologies let us meet your high expectations for productivity, fuel efficiency, reliability, and service life.

Following are the results you can expect:

- **Improved Fluid Efficiency of up to 5%** over Stage IIIB products, including Diesel Exhaust Fluid (DEF) consumption.
- **High Performance** across a variety of applications.
- **Enhanced Reliability** through commonality and simplicity of design.
- **Maximized Uptime and Reduced Cost** with world-class Cat dealer support.
- **Minimized Impact on Emission Systems** – with no operator interaction required.
- **Durability** with long service life.
- **Better Fuel Economy** with minimized maintenance costs.
- **Same Great Power and Response.**

## Biodiesel Not a Problem

The C7.1 ACERT engine can run on up to B20 biodiesel fuel that meets ASTM 6751 standards – all to give you more potential fuel-saving flexibility.

## A Cool Design for Any Temperature

The 330F features a side-by-side cooling system that allows you to put the machine to work in extremely hot and cold conditions. The system is completely separated from the engine compartment to reduce noise and heat. Plus it features easy-to-clean cores and an efficient variable-speed fan.

## Diesel Exhaust Fluid (DEF)

Cat engines equipped with an SCR system inject DEF into the exhaust to reduce NO<sub>x</sub> emissions. DEF is a precisely mixed solution of 32.5% high purity chemical grade urea and 67.5% de-ionized water. DEF used in Cat SCR systems must meet the requirements outlined in the International Organization for Standardization (ISO) standard 22241-1.



## Durable Structures

Designed to work in your tough applications

### Robust Frame

The 330F is a well-built machine designed to give you a very long service life.

The upper frame has mountings made specifically to support the heavy-duty cab; it is also reinforced around key areas that take on stress like the boom foot and skirt. Massive bolts are used to attach the track frames to the body, and additional bolts are used to increase the machine's digging force, which leads to more productivity for you.

### Stable Undercarriages

The 330F Long (L) and 330F Long Narrow (LN) undercarriages contribute significantly to their outstanding stability and durability. Track shoes, links, rollers, idlers, and final drives are all built with long-lasting, high-tensile-strength steel for long-term durability.

Cat Grease Lubricated Track 2 (GLT2) track link protects moving parts by keeping water, debris, and dust out and grease sealed in, which delivers longer wear life and reduced noise when traveling.

Optional guide guards help maintain track alignment to improve the machine's overall performance – whether you're traveling on a flat, heavy bed of rock or a steep, wet field of mud.

### Great Weight

The 5.8 mt counterweight is built with thick steel plates and reinforced fabrications to make it less susceptible to damage, designed with curved surfaces that match the machine's sleek, smooth appearance along with integrated housings to help protect the standard rearview camera.

# Durable Linkages

Options to take on your far-reaching and up-close tasks



## Built to Last

The 330F is offered with Reach boom and sticks. Each is built with internal baffle plates and stress-relieved for added durability, and each undergoes ultrasound inspection to ensure quality and reliability. Large box-section structures with thick, multi-plate fabrications, castings, and forgings are used in high-stress areas such as the boom nose, boom foot, boom cylinder, and stick foot to improve durability. Also, the boom nose pin retention method is a captured flag design for enhanced durability.

## Linkage for Any Job

The Reach boom 6.15 m and sticks (3.2 m, 2.65 m) offer you excellent all-around versatility for general excavation work, including excavating basements, trenching for utility lines, and working in sewer applications.

Sticks are matched to the boom. Longer sticks are better when you need to dig deep or load trucks. Shorter sticks provide greater breakout force.

## Pins

All front linkage pins have thick chrome plating, giving them high wear resistance. Each pin diameter is made to distribute the shear and bending loads associated with the stick and to help ensure long pin, boom and stick life.

Talk to your Cat dealer to pick the best front linkage options for your applications.



## Reliable and Productive

Power to move your material with speed and precision

### Powerful, Efficient Design

When it comes to moving heavy material quickly and efficiently, you need hydraulic horsepower – the type of ground-breaking power the 330F can deliver. Major hydraulic components like pumps and valves are located close together so shorter tubes and lines can be used. This design leads to less friction loss, reduced pressure drops, and more power to the ground for the work you need to get done.

The heavy lift mode increases machine system pressure to improve lift – a nice benefit in certain situations. Heavy lift mode also reduces engine speed and pump flow in order to improve controllability.

### Control Like No Other

Controllability is one of the main attributes of Cat excavators, and one of the key contributors to this is the main control valve. The valve opens slowly when your range of joystick lever movement is small and opens rapidly when movement is high.

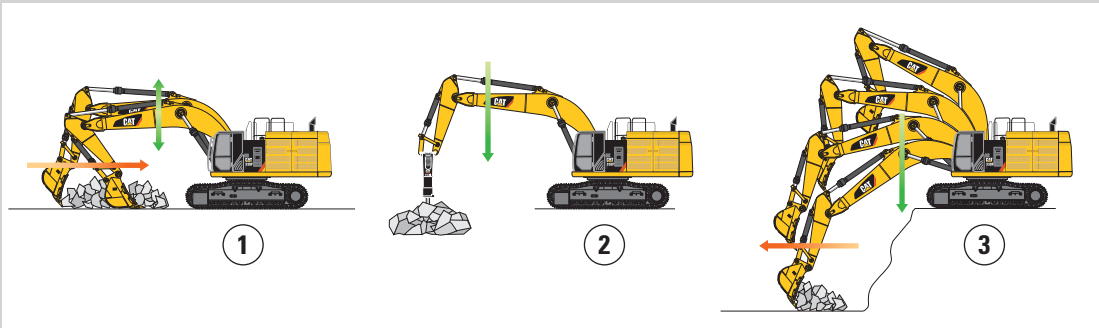
It puts flow where you need it when you need it, which leads to smoother operation, greater efficiency, and lower fuel consumption.

### Auxiliary Hydraulics for Added Versatility

Auxiliary hydraulics give you greater tool versatility so you can take on more work with just one machine, and there are several options from which you can choose. A quick coupler circuit, for example, will allow you to switch from one tool to another in a matter of minutes.

# SmartBoom™

## Reduces Stress and Vibrations Transmitted to the Machine



### Rock Scraping (1)

Scraping rock and finishing work is easy and fast. SmartBoom simplifies the task and allows the operator to fully concentrate on the stick and bucket while the boom freely goes up and down without using pump flow.

### Hammer Work (2)

It has never been this productive and operator-friendly. The front parts automatically follow the hammer while penetrating the rock. Blank shots or excessive force on the hammer are avoided, resulting in longer life for the hammer and machine. Similar advantages are applicable when using vibratory plates.

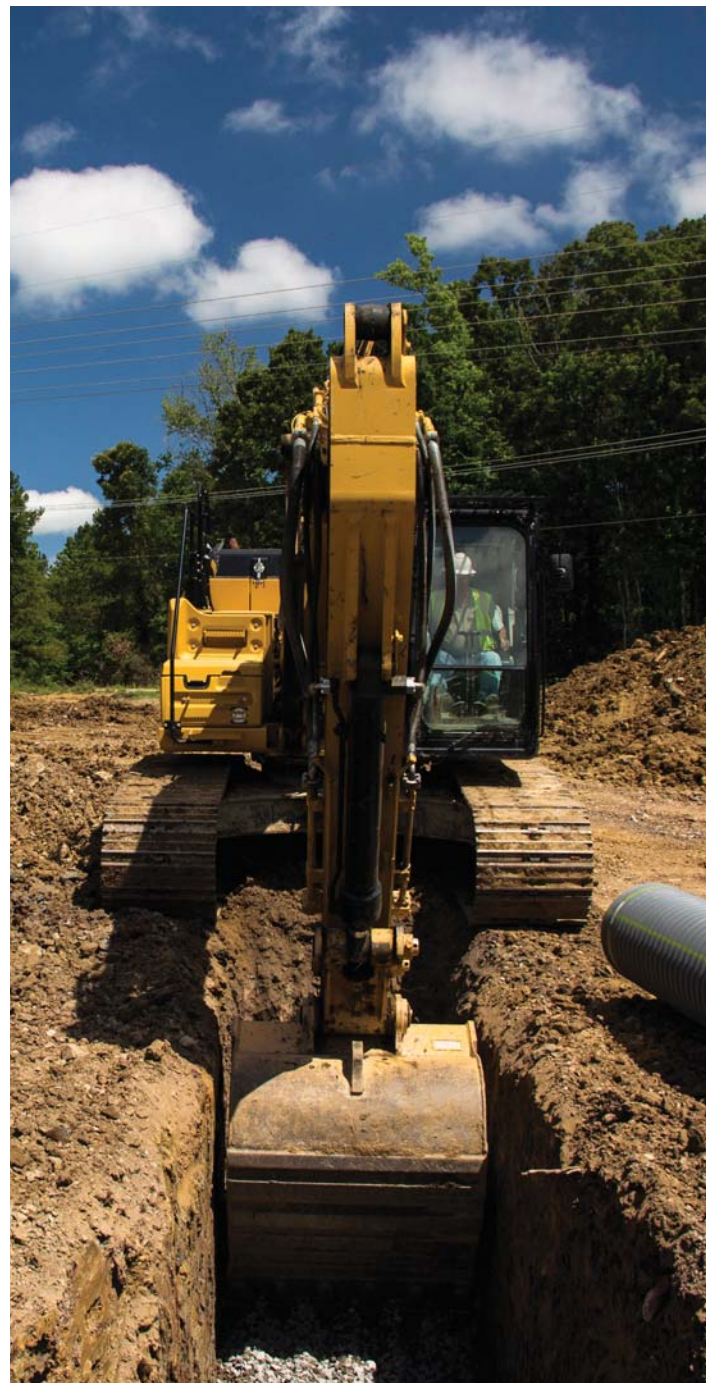
### Truck Loading (3)

Loading trucks from a bench is more productive and fuel efficient as the return cycle is reduced while the boom down function does not require pump flow.

### Boom and Stick Oil Re-circulation for Added Efficiency

The 330F L regenerates the flow of oil from the head end of the boom and stick cylinders to the rod end of the boom and stick cylinders during the work cycle to save energy and improve fuel efficiency.

It's optimized for any dial speed setting you select, which results in less pressure loss for higher controllability, more productivity, and lower operating costs for you.





### **Ground-Level Access**

You can reach most routine maintenance items like fluid taps and grease points from the safety and convenience of ground level. Not only do compartments feature wide service doors designed to help prevent debris entry, but they also securely latch in place to help make your service work simpler.

## **Serviceable**

Designed to make your maintenance quick and easy



### **A Cool Design**

The high-ambient cooling system features a fuel-saving variable-speed fan and a side-by-side-mounted radiator and oil and air coolers for easy cleaning. Wider clearance between the two make blowing off debris easy for you, which can help improve your machine's reliability and performance.

### **A Fresh Idea**

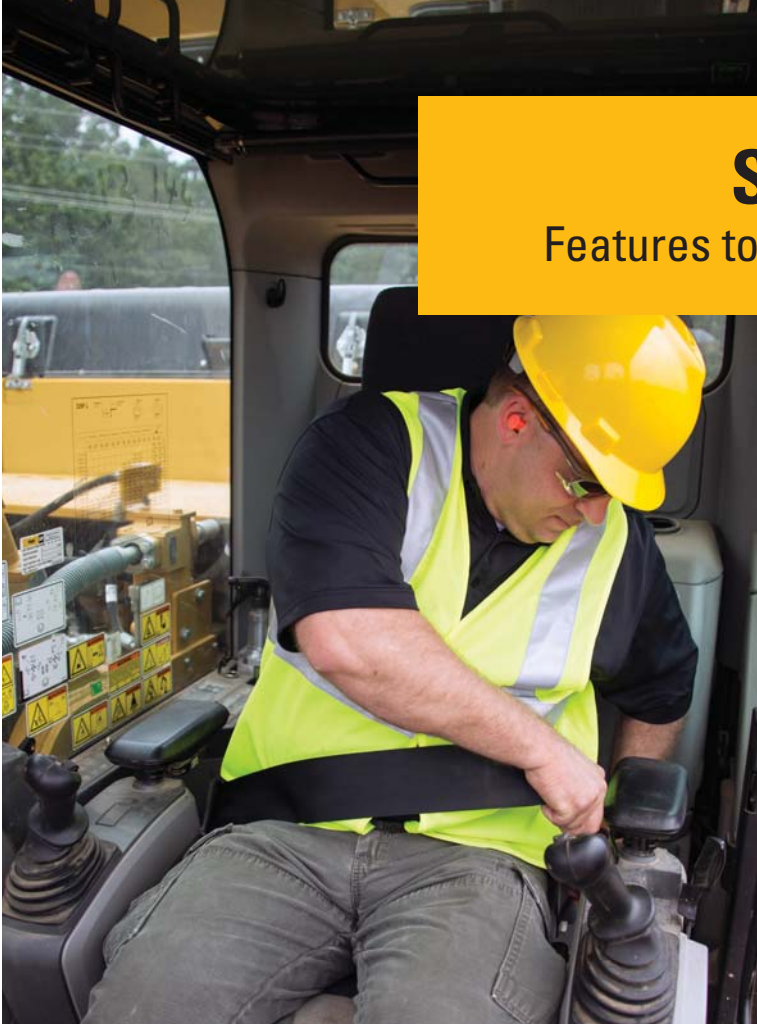
When you select ventilation inside the cab, outside air enters through the fresh air filter. The filter is conveniently located on the side of the cab to make it easy to reach and replace, and it is protected by a lockable door that can be opened with the engine key.

### **Quick and Convenient Fluids Service**

The fuel tank's drain cock makes it easy and simple for you to remove water and sediment during routine maintenance. Plus an integrated fuel level indicator pops up to help you reduce the possibility of fuel tank overfilling.

# Safe Work Environment

## Features to help protect you day in and day out



### A Safe, Quiet Cab

The ROPS-certified cab provides you with a safe working environment. It also contributes to your comfort because it's attached to a reinforced frame with special viscous mounts that limit vibration and unnecessary sound. Add in special roof lining and sealing and you have a cab that's as quiet inside as any of today's highway trucks.

Optional Falling Object Guards (FOGS) further protect you from debris coming to the cab.

### Great Views

Ample glass coupled with the standard parallel wiper system, gives you excellent visibility out front and to the side, and the standard rearview camera gives you a clear field of view behind the machine through the cab monitor.

### Smart Lighting

Halogen lights provide plenty of illumination, and the cab and boom lights can be programmed to stay on for up to 90 seconds after the engine has been turned off to help you safely exit the machine. Optional High Intensity Discharge (HID) lights are available for enhanced night-time visibility.

### Secure Contact Points

Multiple large steps get you into the cab as well as a leg up to the compartments. Extended hand and guard rails allow you to safely climb to the upper deck. Anti-skid plates reduce your slipping hazards in all types of weather conditions, and they can be removed for cleaning.



# Versatile

Do more jobs with one machine





## Get the Most from One Machine

The 330F is a versatile machine that packs a lot of performance into a small package. You can easily expand that performance by utilizing a variety of attachments offered by Cat Work Tools.

## Change Jobs Quickly

Cat quick couplers bring the ability to quickly change attachments and switch from job to job. The CW Dedicated or the Cat Pin Grabber couplers are the secure way to decrease downtime and increase job site flexibility and overall productivity.

## Dig, Rip and Load

A wide range of buckets dig everything from basic top soil to extreme, harsh material like ore and high quartzite granite. Rip through rock as an alternative to blasting in quarries. High-capacity buckets load trucks in a minimum number of passes for maximum productivity.

## Break, Demolish and Scrap

A hydraulic hammer ably equips your machine for breaking rock in quarries. It will also make taking down bridge pillars and heavily reinforced concrete on road demolition jobs no problem.

Multi-processor and pulverizer attachments make your machine ideal for demolition jobs and processing the resulting debris. Shears with 360° rotation mount to the machine for processing scrap steel and metal.

## Set Up Your Machine for Profitability

Your Cat dealer can install hydraulic kits to properly operate all Cat Work Tool attachments, maximizing the machine's uptime and your profit.



1) CW Dedicated Quick Coupler 2) Cat Pin Grabber Coupler  
3) General Duty (GD) 4) Heavy Duty (HD)  
5) Severe Duty (SD) 6) Extreme Duty (XD)

# Integrated Technologies

Monitor, manage, and enhance job site operations



Cat Connect makes smart use of technology and services to improve your job site efficiency. Using the data from technology-equipped machines, you'll get more information and insight into your equipment and operations than ever before.

Cat Connect technologies offer improvements in these key areas:



EQUIPMENT  
MANAGEMENT

**Equipment Management** – increase uptime and reduce operating costs.



PRODUCTIVITY

**Productivity** – monitor production and manage job site efficiency.



SAFETY

**Safety** – enhance job site awareness to keep your people and equipment safe.

## LINK Technologies

LINK technologies, like Product Link™, are deeply integrated into your machine and wirelessly communicates key information, including location, hours, fuel usage, idle time and event codes.

## Product Link/VisionLink®

Easy access to Product Link data via the online VisionLink user interface can help you see how your machine or fleet is performing. You can use this information to make timely, fact based decisions that can boost job site efficiency and productivity, and lower costs.



## GRADE Technologies

Grade technologies combine digital design data and in-cab guidance to help you reach target grade quickly and accurately, with minimal staking and checking. That means you'll be more productive, complete jobs faster, in fewer passes, using less fuel, at a lower cost.



### Cat Grade Control Depth and Slope

The factory integrated Cat Grade Control system delivers 2D bucket tip elevation guidance to the cab to help operators create precise planes and slopes with ease. Real-time bucket tip elevation guidance on the easy-to-read standard cab monitor indicates how much to cut or fill. Fast response sensors deliver immediate feedback, while optional integrated joystick buttons help operators make quick adjustments to maintain consistent, quality grades. Built-in alerts can be set to warn the operator if the linkage or bucket approaches a predefined elevation or depth, such as when working in areas with low ceilings, or digging near water lines. Staking and checking is minimized, which reduces ground crews and enhances job site safety.

Works best in simple 2D applications, such as digging basements or grading steep embankments. Easily upgrade to AccuGrade™ when 3D control is required.

### Cat AccuGrade

The dealer-installed AccuGrade system provides 3D guidance for making complex cuts and contours, eliminating the need for staking and checking. A dedicated monitor displays a digital design plan with 3D bucket tip positioning and elevation guidance, indicating precisely where to work and how much to cut or fill.

Plug and play capability on the 330F simplifies upgrading. Choose from satellite (GNSS) control for large projects with complex designs or total station (UTS) systems in areas with limited reception.





# Complete Customer Care

Unmatched support makes the difference

## Sustainable Generations ahead in every way

- The C7.1 ACERT engine meets Stage IV emission standards.
- The 330F performs the same amount of work while burning less fuel than the previous E Series model, which means more efficiency, less resources consumed, and fewer emissions.
- The 330F has the flexibility of running on either ultra-low-sulfur diesel (ULSD) fuel with 10 ppm of sulfur or less or biodiesel (up to B20) fuel blended with ULSD.
- A ground-level overfill indicator rises when the tank is full to help the operator avoid spilling.
- The QuickEvac™ option ensures fast, easy, and secure changing of engine and hydraulic oil.
- The 330F is built to be rebuilt with major structures and components capable of being remanufactured to reduce waste and replacement costs.
- An engine oil filter eliminates the need for painted metal cans and aluminum top plates. The cartridge-style spin-on housing enables the internal filter to be separated and replaced; the used internal element can be incinerated to help reduce waste.
- The 330F is an efficient, productive machine that's designed to conserve our natural resources for generations ahead.

### Worldwide Parts Availability

Cat dealers utilize a worldwide parts network to maximize your machines' uptime. Plus they can help you save money with Cat remanufactured components.

### Financial Options Just for You

Consider financing options and day-to-day operating costs. Look at dealer services that can be included in the machine's cost to yield lower owning and operating costs over time.

### What's Best for You Today...and Tomorrow

Repair, rebuild, or replace? Your Cat dealer can help you evaluate the cost involved so you can make the best choice for your business.



# 330F Hydraulic Excavator Specifications

## Engine

|                            |                 |
|----------------------------|-----------------|
| Engine Model               | Cat C7.1 ACERT  |
| Power – SAE J1995 (metric) | 178 kW (242 PS) |
| Power – ISO 14396 (metric) | 178 kW (242 PS) |
| Power – ISO 9249 (metric)  | 175 kW (238 PS) |
| Bore                       | 105 mm          |
| Stroke                     | 135 mm          |
| Displacement               | 7.01 L          |

## Weights

|                |           |
|----------------|-----------|
| Minimum Weight | 28 293 kg |
| Maximum Weight | 29 753 kg |

## Hydraulic System

|                        |                              |
|------------------------|------------------------------|
| Maximum Flow           |                              |
| Main System            | 2 × 247 L/min<br>(494 L/min) |
| Swing System           | 240 L/min                    |
| Pilot System           | 30 L/min                     |
| Maximum Pressure       |                              |
| Equipment – Normal     | 35 000 kPa                   |
| Equipment – Heavy Lift | 38 000 kPa                   |
| Travel                 | 37 000 kPa                   |
| Swing                  | 27 400 kPa                   |
| Pilot System           | 4100 kPa                     |
| Boom Cylinder          |                              |
| Bore                   | 140 mm                       |
| Stroke                 | 1407 mm                      |
| Stick Cylinder         |                              |
| Bore                   | 150 mm                       |
| Stroke                 | 1646 mm                      |
| CB2 Bucket Cylinder    |                              |
| Bore                   | 150 mm                       |
| Stroke                 | 1151 mm                      |

## Drive

|                      |          |
|----------------------|----------|
| Maximum Gradeability | 30°/70%  |
| Maximum Drawbar Pull | 247 kN   |
| Maximum Travel Speed | 5.1 km/h |

## Swing Mechanism

|              |           |
|--------------|-----------|
| Swing Speed  | 9.6 rpm   |
| Swing Torque | 82.2 kN·m |

## Service Refill Capacities

|  |       |
|--|-------|
| Fuel Tank Capacity                             | 520 L |
| Cooling System                                 | 30 L  |
| Engine Oil (with filter)                       | 24 L  |
| Swing Drive (each)                             | 9 L   |
| Final Drive (each)                             | 6 L   |
| Hydraulic System Oil Capacity (including tank) | 310 L |
| Hydraulic Tank Oil                             | 175 L |
| DEF Tank                                       | 41 L  |

## Track

|                                       |                                      |
|---------------------------------------|--------------------------------------|
| Number of Shoes (each side)           | 50                                   |
| Number of Track Rollers (each side)   | 9                                    |
| Number of Carrier Rollers (each side) | 2                                    |
| Track Options                         | 600 mm<br>700 mm<br>800 mm<br>900 mm |

## Sound Performance

|   |            |
|---|------------|
| Operator Sound Pressure Level – ISO 6396:2008 | 72 dB(A)   |
| Exterior Sound Power Level – ISO 6395:2008    | 104 dB(A)* |

- Hearing protection may be needed when operating with an open operator station and cab (when not properly maintained or doors/windows open) for extended periods or in a noisy environment.
- When properly installed and maintained, the cab offered by Caterpillar, when tested with doors and windows closed according to ANSI/SAE J1166 OCT98, meets OSHA and MSHA requirements for operator sound exposure limits in effect at time of manufacture.

\*as per European Union Directive 2000/14/EC as amended by 2005/88/EC

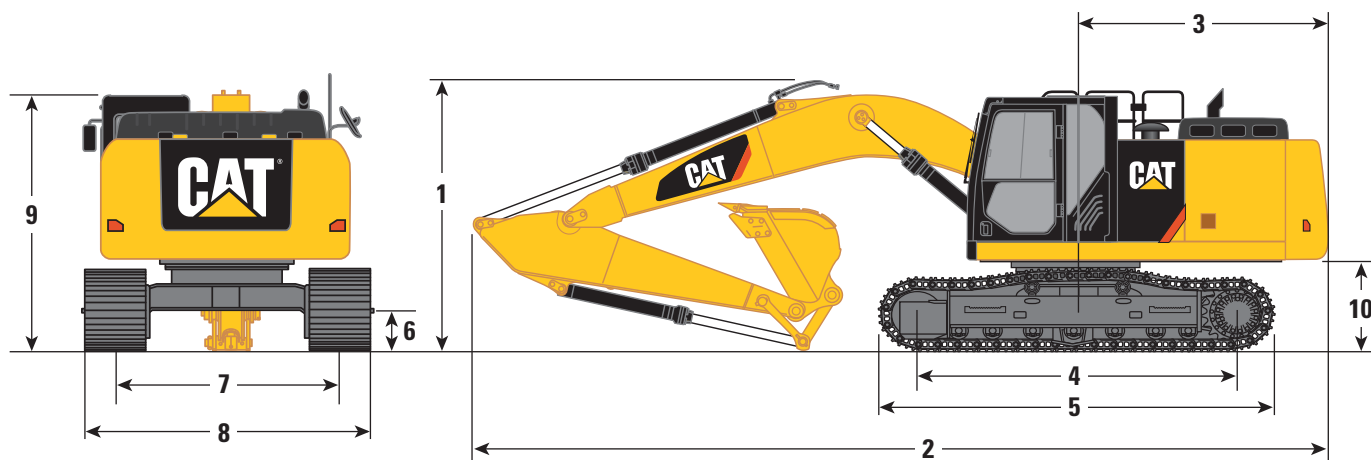
## Standards

|          |                     |
|----------|---------------------|
| Brakes   | ISO 10265 2008      |
| Cab/FOGS | ISO 10262 1998      |
| ROPS Cab | ISO 12117-2         |
| DEF      | Must meet ISO 22241 |

# 330F Hydraulic Excavator Specifications

## Dimensions

All dimensions are approximate.



|  | Reach Boom<br>6.15 m |                     |
|--|----------------------|---------------------|
| Stick Size                               | R3.2CB2              | R2.65CB2            |
| <b>1</b> Shipping Height*                | 3370 mm              | 3450 mm             |
| <b>2</b> Shipping Length                 | 10 390 mm            | 10 400 mm           |
| <b>3</b> Tail Swing Radius               | 3090 mm              | 3090 mm             |
| <b>4</b> Length to Center of Rollers     |                      |                     |
| Long Undercarriage                       | 3990 mm              | 3990 mm             |
| Long Narrow Undercarriage                | 3990 mm              | 3990 mm             |
| <b>5</b> Track Length                    |                      |                     |
| Long Undercarriage                       | 4860 mm              | 4860 mm             |
| Long Narrow Undercarriage                | 4860 mm              | 4860 mm             |
| <b>6</b> Ground Clearance**              | 490 mm               | 490 mm              |
| <b>7</b> Track Gauge                     |                      |                     |
| Long Undercarriage                       | 2590 mm              | 2590 mm             |
| Long Narrow Undercarriage                | 2390 mm              | 2390 mm             |
| <b>8</b> Transport Width                 |                      |                     |
| Long Undercarriage – 600 mm Shoes        | 3190 mm              | 3190 mm             |
| Long Undercarriage – 700 mm Shoes        | 3290 mm              | 3290 mm             |
| Long Undercarriage – 800 mm Shoes        | 3390 mm              | 3390 mm             |
| Long Undercarriage – 900 mm Shoes        | 3490 mm              | 3490 mm             |
| Long Narrow Undercarriage – 600 mm Shoes | 2990 mm              | 2990 mm             |
| Long Narrow Undercarriage – 700 mm Shoes | 3090 mm              | 3090 mm             |
| Long Narrow Undercarriage – 800 mm Shoes | 3190 mm              | 3190 mm             |
| <b>9</b> Cab Height*                     | 3040 mm              | 3040 mm             |
| <b>10</b> Counterweight Clearance**      | 1110 mm              | 1110 mm             |
| Bucket Type                              | HD                   | HD                  |
| Bucket Capacity                          | 1.51 m <sup>3</sup>  | 1.51 m <sup>3</sup> |
| Bucket Tip Radius                        | 1650 mm              | 1650 mm             |

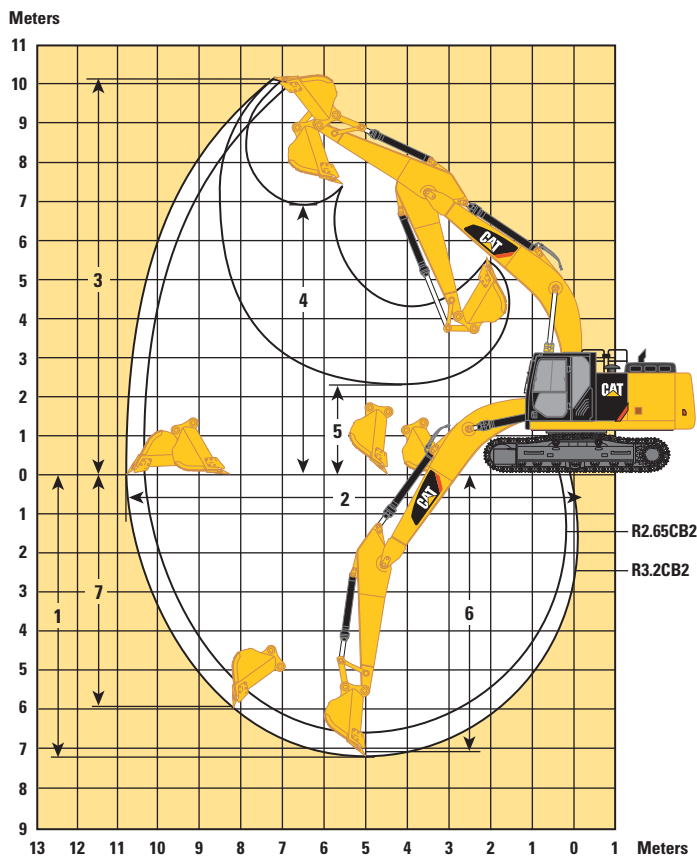
\*Including shoe lug height.

\*\*Without shoe lug height.

# 330F Hydraulic Excavator Specifications

## Working Ranges

All dimensions are approximate.



| Stick Size                                   | Reach Boom<br>6.15 m |                     |
|--|----------------------|---------------------|
|  | R3.2CB2              | R2.65CB2            |
| 1 Maximum Digging Depth                      | 7250 mm              | 6700 mm             |
| 2 Maximum Reach at Ground Level              | 10 680 mm            | 10 200 mm           |
| 3 Maximum Cutting Height                     | 10 010 mm            | 9900 mm             |
| 4 Maximum Loading Height                     | 6950 mm              | 6800 mm             |
| 5 Minimum Loading Height                     | 2290 mm              | 2840 mm             |
| 6 Maximum Depth Cut for 2440 mm Level Bottom | 7090 mm              | 6520 mm             |
| 7 Maximum Vertical Wall Digging Depth        | 5980 mm              | 5680 mm             |
| Bucket Type                                  | HD                   | GD                  |
| Bucket Capacity                              | 1.51 m <sup>3</sup>  | 1.71 m <sup>3</sup> |
| Bucket Tip Radius                            | 1650 mm              | 1650 mm             |
| Stick Cylinder Force (ISO)                   | 126 kN               | 145 kN              |
| Bucket Cylinder Force (ISO)                  | 179 kN               | 180 kN              |

# 330F Hydraulic Excavator Specifications

## Operating Weights and Ground Pressures

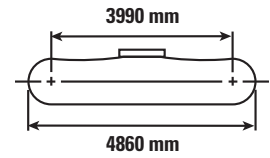
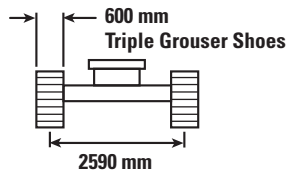
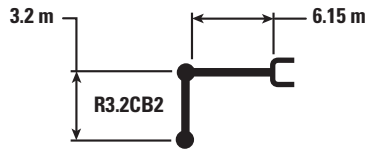
| Boom                             | Stick    | Bucket    | 600 mm Shoes<br>(Triple Grouser) |                 | 600 mm Shoes<br>(Triple Grouser HD) |                 | 700 mm Shoes<br>(Triple Grouser) |                 | 800 mm Shoes<br>(Triple Grouser HD) |                 | 900 mm Shoes<br>(Triple Grouser) |                 |
|----------------------------------|----------|-----------|----------------------------------|-----------------|-------------------------------------|-----------------|----------------------------------|-----------------|-------------------------------------|-----------------|----------------------------------|-----------------|
|                                  |          |           | Weight                           | Ground Pressure | Weight                              | Ground Pressure | Weight                           | Ground Pressure | Weight                              | Ground Pressure | Weight                           | Ground Pressure |
|                                  |          |           | kg                               | kPa             | kg                                  | kPa             | kg                               | kPa             | kg                                  | kPa             | kg                               | kPa             |
| <b>Long Undercarriage</b>        |          |           |                                  |                 |                                     |                 |                                  |                 |                                     |                 |                                  |                 |
| R6.15 m                          | R3.2CB2  | CB1350 HD | 28 405                           | 54.0            | 28 948                              | 55.0            | 28 740                           | 46.8            | 29 368                              | 41.9            | 29 753                           | 37.7            |
| R6.15 m                          | R2.65CB2 | CB1350 HD | 28 305                           | 53.8            | 28 848                              | 54.8            | 28 640                           | 46.7            | 29 268                              | 41.7            | 29 653                           | 37.6            |
| <b>Long Narrow Undercarriage</b> |          |           |                                  |                 |                                     |                 |                                  |                 |                                     |                 |                                  |                 |
| R6.15 m                          | R3.2CB2  | CB1350 HD | 28 393                           | 54.0            | 28 936                              | 55.0            | —                                | —               | —                                   | —               | —                                | —               |
| R6.15 m                          | R2.65CB2 | CB1350 HD | 28 293                           | 53.8            | 28 836                              | 54.8            | —                                | —               | —                                   | —               | —                                | —               |

## Major Component Weights

|   |         |
|---|---------|
| Base Machine (includes boom cylinders, pins and fluids)             | 8656 kg |
| Full Fuel Tank  | 415 kg  |
| Counterweight   | 5800 kg |
| Boom (includes lines, pins and stick cylinder)                      |         |
| Reach Boom – 6.15 m   | 1950 kg |
| Stick (includes lines, stick pins, bucket pins and bucket cylinder) |         |
| R3.2CB2   | 800 kg  |
| R2.65CB2  | 700 kg  |
| Undercarriage   |         |
| Long Undercarriage  | 5995 kg |
| Long Narrow Undercarriage   | 5983 kg |
| Track Shoes   |         |
| 600 mm Triple Grouser Shoes   | 3583 kg |
| 600 mm Triple Grouser HD Shoes                                      | 4126 kg |
| 700 mm Triple Grouser Shoes   | 3918 kg |
| 800 mm Triple Grouser Shoes   | 4546 kg |
| 900 mm Triple Grouser Shoes   | 4931 kg |
| Common Buckets (for Reach front)                                    |         |
| Bucket: CB1350HD 1.54 m <sup>3</sup>                                | 1131 kg |
| Bucket: CB1500GD 1.71 m <sup>3</sup>                                | 1041 kg |
| Quick Couplers  |         |
| Pin Grabber Type CB without Pin                                     | 502 kg  |
| Pin Grabber Type CB with Pin  | 532 kg  |

# 330F Hydraulic Excavator Specifications

## 330F L Reach Boom Lift Capacities – Counterweight: 5.8 mt – without Bucket – Heavy Lift On



|          |    | 1500 mm |         | 3000 mm |         | 4500 mm |        | 6000 mm |      | 7500 mm |      | 9000 mm |      | mm    |       |      |
|----------|----|---------|---------|---------|---------|---------|--------|---------|------|---------|------|---------|------|-------|-------|------|
|          |    |         |         |         |         |         |        |         |      |         |      |         |      |       |       |      |
| 7500 mm  | kg |         |         |         |         |         |        |         |      |         |      |         |      | *5600 | *5600 | 7280 |
| 6000 mm  | kg |         |         |         |         |         |        |         |      | *7900   | 5950 |         |      | *5350 | 5100  | 8230 |
| 4500 mm  | kg |         |         |         |         |         |        | *9200   | 8200 | *8350   | 5850 |         |      | *5350 | 4500  | 8830 |
| 3000 mm  | kg |         |         |         |         | *14 200 | 11 900 | *10 750 | 7800 | 8700    | 5650 | *6500   | 4300 | *5450 | 4200  | 9140 |
| 1500 mm  | kg |         |         |         |         | *16 900 | 11 150 | 11 900  | 7450 | 8500    | 5450 | 6500    | 4200 | *5800 | 4100  | 9190 |
| 0 mm     | kg |         |         |         |         | *18 200 | 10 800 | 11 650  | 7200 | 8350    | 5300 |         |      | *6400 | 4150  | 8990 |
| -1500 mm | kg | *6750   | *6750   | *10 600 | *10 600 | *18 200 | 10 700 | 11 500  | 7100 | 8250    | 5250 |         |      | 6900  | 4450  | 8530 |
| -3000 mm | kg | *12 150 | *12 150 | *17 150 | *17 150 | *17 050 | 10 800 | 11 550  | 7100 | 8300    | 5300 |         |      | 7950  | 5100  | 7740 |
| -4500 mm | kg |         |         | *19 800 | *19 800 | *14 550 | 11 000 | *10 750 | 7300 |         |      |         |      | *9450 | 6550  | 6520 |



ISO 10567



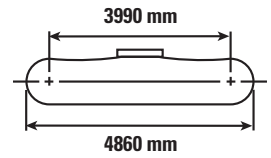
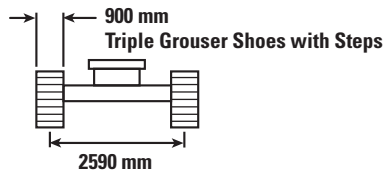
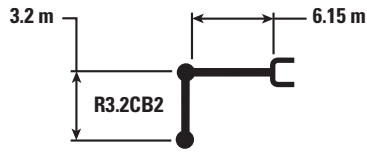
\*Indicates that the load is limited by hydraulic lifting capacity rather than tipping load. The above loads are in compliance with hydraulic excavator lift capacity standard ISO 10567:2007. They do not exceed 87% of hydraulic lifting capacity or 75% of tipping load. Weight of all lifting accessories must be deducted from the above lifting capacities. Lifting capacities are based on the machine standing on a firm, uniform supporting surface. The use of a work tool attachment point to handle/lift objects, could affect the machine lift performance.

Lift capacity stays with ±5% for all available track shoes.

Always refer to the appropriate Operation and Maintenance Manual for specific product information.

# 330F Hydraulic Excavator Specifications

## 330F L Reach Boom Lift Capacities – Counterweight: 5.8 mt – without Bucket – Heavy Lift On



| Reach (mm) | Unit | 1500 mm   |           | 3000 mm   |           | 4500 mm   |           | 6000 mm   |           | 7500 mm   |           | 9000 mm   |           | mm        |           |      |
|------------|------|-----------|-----------|-----------|-----------|-----------|-----------|-----------|-----------|-----------|-----------|-----------|-----------|-----------|-----------|------|
|            |      | Diagram 1 | Diagram 2 | Diagram 1 | Diagram 2 | Diagram 1 | Diagram 2 | Diagram 1 | Diagram 2 | Diagram 1 | Diagram 2 | Diagram 1 | Diagram 2 | Diagram 1 | Diagram 2 |      |
| 7500 mm    | kg   |           |           |           |           |           |           |           |           |           |           |           |           | *5600     | *5600     | 7280 |
| 6000 mm    | kg   |           |           |           |           |           |           |           |           | *7900     | 6200      |           |           | *5350     | 5300      | 8230 |
| 4500 mm    | kg   |           |           |           |           |           |           | *9200     | 8500      | *8350     | 6050      |           |           | *5350     | 4700      | 8830 |
| 3000 mm    | kg   |           |           |           |           | *14 200   | 12 350    | *10 750   | 8100      | 9050      | 5850      | *6500     | 4450      | *5450     | 4350      | 9140 |
| 1500 mm    | kg   |           |           |           |           | *16 900   | 11 600    | *12 250   | 7750      | 8850      | 5700      | 6750      | 4400      | *5800     | 4250      | 9190 |
| 0 mm       | kg   |           |           |           |           | *18 200   | 11 250    | 12 150    | 7500      | 8700      | 5550      |           |           | *6400     | 4350      | 8990 |
| -1500 mm   | kg   | *6750     | *6750     | *10 600   | *10 600   | *18 200   | 11 150    | 12 000    | 7400      | 8600      | 5450      |           |           | 7200      | 4650      | 8530 |
| -3000 mm   | kg   | *12 150   | *12 150   | *17 150   | *17 150   | *17 050   | 11 250    | 12 050    | 7400      | 8650      | 5500      |           |           | 8300      | 5300      | 7740 |
| -4500 mm   | kg   |           |           | *19 800   | *19 800   | *14 550   | 11 450    | *10 750   | 7600      |           |           |           |           | *9450     | 6800      | 6520 |



ISO 10567



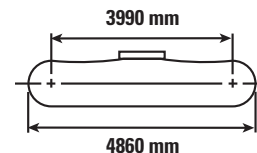
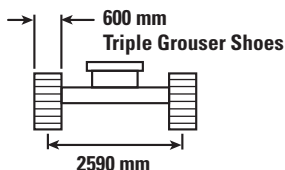
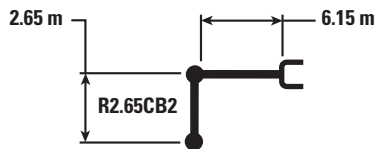
\*Indicates that the load is limited by hydraulic lifting capacity rather than tipping load. The above loads are in compliance with hydraulic excavator lift capacity standard ISO 10567:2007. They do not exceed 87% of hydraulic lifting capacity or 75% of tipping load. Weight of all lifting accessories must be deducted from the above lifting capacities. Lifting capacities are based on the machine standing on a firm, uniform supporting surface. The use of a work tool attachment point to handle/lift objects, could affect the machine lift performance.

Lift capacity stays with ±5% for all available track shoes.

Always refer to the appropriate Operation and Maintenance Manual for specific product information.

# 330F Hydraulic Excavator Specifications

## 330F L Reach Boom Lift Capacities – Counterweight: 5.8 mt – without Bucket – Heavy Lift On



| Reach (mm) | Unit | 3000 mm |         | 4500 mm |         | 6000 mm |      | 7500 mm |      | mm    |      |      |
|------------|------|---------|---------|---------|---------|---------|------|---------|------|-------|------|------|
|            |      |         |         |         |         |         |      |         |      |       |      |      |
| 7500 mm    | kg   |         |         |         |         |         |      |         |      | *7350 | 7150 | 6670 |
| 6000 mm    | kg   |         |         |         |         | *8950   | 8400 | *8400   | 5900 | *6900 | 5650 | 7700 |
| 4500 mm    | kg   |         |         | *12 300 | *12 300 | *10 050 | 8150 | 8900    | 5800 | *6850 | 4950 | 8340 |
| 3000 mm    | kg   |         |         | *15 500 | 11 750  | *11 500 | 7800 | 8700    | 5650 | 7000  | 4600 | 8670 |
| 1500 mm    | kg   |         |         | *16 550 | 11 150  | 11 950  | 7450 | 8550    | 5500 | 6850  | 4450 | 8720 |
| 0 mm       | kg   |         |         | *17 550 | 10 900  | 11 700  | 7300 | 8400    | 5400 | 7050  | 4550 | 8510 |
| -1500 mm   | kg   | *10 350 | *10 350 | *18 000 | 10 900  | 11 650  | 7200 | 8400    | 5350 | 7650  | 4950 | 8020 |
| -3000 mm   | kg   | *19 400 | *19 400 | *16 450 | 11 000  | 11 700  | 7300 |         |      | 9050  | 5800 | 7180 |
| -4500 mm   | kg   | *17 350 | *17 350 | *13 150 | 11 300  |         |      |         |      | *9600 | 7850 | 5830 |



ISO 10567



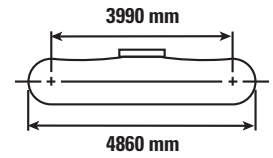
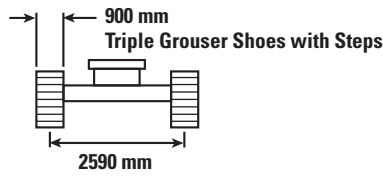
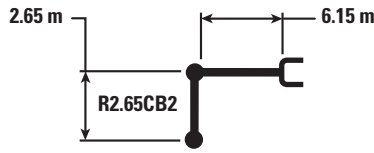
\*Indicates that the load is limited by hydraulic lifting capacity rather than tipping load. The above loads are in compliance with hydraulic excavator lift capacity standard ISO 10567:2007. They do not exceed 87% of hydraulic lifting capacity or 75% of tipping load. Weight of all lifting accessories must be deducted from the above lifting capacities. Lifting capacities are based on the machine standing on a firm, uniform supporting surface. The use of a work tool attachment point to handle/lift objects, could affect the machine lift performance.

Lift capacity stays with  $\pm 5\%$  for all available track shoes.

Always refer to the appropriate Operation and Maintenance Manual for specific product information.

# 330F Hydraulic Excavator Specifications

## 330F L Reach Boom Lift Capacities – Counterweight: 5.8 mt – without Bucket – Heavy Lift On



| Reach (mm) | Unit | 3000 mm   |           | 4500 mm   |           | 6000 mm   |           | 7500 mm   |           | mm        |           |      |
|------------|------|-----------|-----------|-----------|-----------|-----------|-----------|-----------|-----------|-----------|-----------|------|
|            |      | Diagram 1 | Diagram 2 | Diagram 1 | Diagram 2 | Diagram 1 | Diagram 2 | Diagram 1 | Diagram 2 | Diagram 1 | Diagram 2 |      |
| 7500 mm    | kg   |           |           |           |           |           |           |           |           | *7350     | *7350     | 6670 |
| 6000 mm    | kg   |           |           |           |           | *8950     | 8700      | *8400     | 6150      | *6900     | 5900      | 7700 |
| 4500 mm    | kg   |           |           | *12 300   | *12 300   | *10 050   | 8450      | *9000     | 6050      | *6850     | 5150      | 8340 |
| 3000 mm    | kg   |           |           | *15 500   | 12 200    | *11 500   | 8100      | 9100      | 5900      | *7000     | 4750      | 8670 |
| 1500 mm    | kg   |           |           | *16 550   | 11 600    | 12 450    | 7800      | 8900      | 5750      | 7150      | 4650      | 8720 |
| 0 mm       | kg   |           |           | *17 550   | 11 400    | 12 200    | 7600      | 8800      | 5600      | 7350      | 4750      | 8510 |
| -1500 mm   | kg   | *10 350   | *10 350   | *18 000   | 11 350    | 12 150    | 7500      | 8750      | 5600      | 8000      | 5150      | 8020 |
| -3000 mm   | kg   | *19 400   | *19 400   | *16 450   | 11 500    | 12 200    | 7600      |           |           | 9400      | 6000      | 7180 |
| -4500 mm   | kg   | *17 350   | *17 350   | *13 150   | 11 750    |           |           |           |           | *9600     | 8150      | 5830 |



ISO 10567



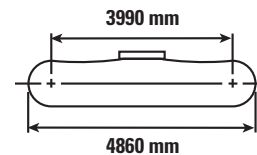
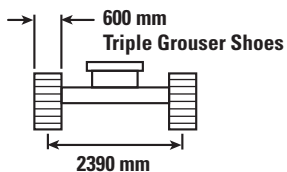
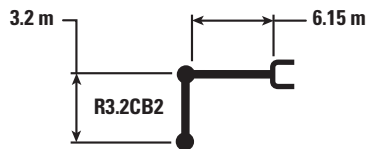
\*Indicates that the load is limited by hydraulic lifting capacity rather than tipping load. The above loads are in compliance with hydraulic excavator lift capacity standard ISO 10567:2007. They do not exceed 87% of hydraulic lifting capacity or 75% of tipping load. Weight of all lifting accessories must be deducted from the above lifting capacities. Lifting capacities are based on the machine standing on a firm, uniform supporting surface. The use of a work tool attachment point to handle/lift objects, could affect the machine lift performance.

Lift capacity stays with ±5% for all available track shoes.

Always refer to the appropriate Operation and Maintenance Manual for specific product information.

# 330F Hydraulic Excavator Specifications

## 330F LN Reach Boom Lift Capacities – Counterweight: 5.8 mt – without Bucket – Heavy Lift On



|          |    | 1500 mm |         | 3000 mm |         | 4500 mm |        | 6000 mm |      | 7500 mm |      | 9000 mm |      | mm    |       |      |
|----------|----|---------|---------|---------|---------|---------|--------|---------|------|---------|------|---------|------|-------|-------|------|
|          |    |         |         |         |         |         |        |         |      |         |      |         |      |       |       |      |
| 7500 mm  | kg |         |         |         |         |         |        |         |      |         |      |         |      | *5600 | *5600 | 7280 |
| 6000 mm  | kg |         |         |         |         |         |        |         |      | *7900   | 5500 |         |      | *5350 | 4700  | 8230 |
| 4500 mm  | kg |         |         |         |         |         |        | *9200   | 7550 | *8350   | 5400 |         |      | *5350 | 4150  | 8830 |
| 3000 mm  | kg |         |         |         |         | *14 200 | 10 850 | *10 750 | 7200 | 8650    | 5200 | *6500   | 3950 | *5450 | 3850  | 9140 |
| 1500 mm  | kg |         |         |         |         | *16 900 | 10 150 | 11 850  | 6850 | 8450    | 5000 | 6450    | 3850 | *5800 | 3750  | 9190 |
| 0 mm     | kg |         |         |         |         | *18 200 | 9800   | 11 600  | 6600 | 8300    | 4900 |         |      | *6400 | 3800  | 8990 |
| -1500 mm | kg | *6750   | *6750   | *10 600 | *10 600 | *18 200 | 9700   | 11 450  | 6500 | 8200    | 4800 |         |      | 6850  | 4100  | 8530 |
| -3000 mm | kg | *12 150 | *12 150 | *17 150 | *17 150 | *17 050 | 9800   | 11 500  | 6500 | 8250    | 4850 |         |      | 7900  | 4700  | 7740 |
| -4500 mm | kg |         |         | *19 800 | 19 500  | *14 550 | 10 000 | *10 750 | 6700 |         |      |         |      | *9450 | 6000  | 6520 |



ISO 10567



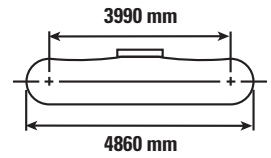
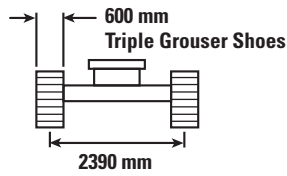
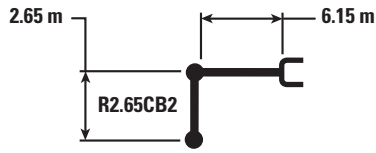
\*Indicates that the load is limited by hydraulic lifting capacity rather than tipping load. The above loads are in compliance with hydraulic excavator lift capacity standard ISO 10567:2007. They do not exceed 87% of hydraulic lifting capacity or 75% of tipping load. Weight of all lifting accessories must be deducted from the above lifting capacities. Lifting capacities are based on the machine standing on a firm, uniform supporting surface. The use of a work tool attachment point to handle/lift objects, could affect the machine lift performance.

Lift capacity stays with  $\pm 5\%$  for all available track shoes.

Always refer to the appropriate Operation and Maintenance Manual for specific product information.

# 330F Hydraulic Excavator Specifications

## 330F LN Reach Boom Lift Capacities – Counterweight: 5.8 mt – without Bucket – Heavy Lift On



| Reach (mm) | Unit | 3000 mm   |         | 4500 mm   |         | 6000 mm   |         | 7500 mm   |         | mm        |         |      |
|------------|------|-----------|---------|-----------|---------|-----------|---------|-----------|---------|-----------|---------|------|
|            |      | Hydraulic | Tipping | Hydraulic | Tipping | Hydraulic | Tipping | Hydraulic | Tipping | Hydraulic | Tipping |      |
| 7500 mm    | kg   |           |         |           |         |           |         |           |         | *7350     | 6600    | 6670 |
| 6000 mm    | kg   |           |         |           |         | *8950     | 7800    | *8400     | 5500    | *6900     | 5250    | 7700 |
| 4500 mm    | kg   |           |         | *12 300   | 11 500  | *10 050   | 7500    | 8850      | 5400    | *6850     | 4550    | 8340 |
| 3000 mm    | kg   |           |         | *15 500   | 10 700  | *11 500   | 7150    | 8650      | 5250    | 6950      | 4250    | 8670 |
| 1500 mm    | kg   |           |         | *16 550   | 10 150  | 11 900    | 6850    | 8500      | 5100    | 6800      | 4100    | 8720 |
| 0 mm       | kg   |           |         | *17 550   | 9950    | 11 650    | 6700    | 8350      | 4950    | 7000      | 4200    | 8510 |
| -1500 mm   | kg   | *10 350   | *10 350 | *18 000   | 9900    | 11 600    | 6600    | 8350      | 4950    | 7600      | 4550    | 8020 |
| -3000 mm   | kg   | *19 400   | *19 400 | *16 450   | 10 050  | 11 650    | 6700    |           |         | 9000      | 5300    | 7180 |
| -4500 mm   | kg   | *17 350   | *17 350 | *13 150   | 10 300  |           |         |           |         | *9600     | 7200    | 5830 |



ISO 10567



\*Indicates that the load is limited by hydraulic lifting capacity rather than tipping load. The above loads are in compliance with hydraulic excavator lift capacity standard ISO 10567:2007. They do not exceed 87% of hydraulic lifting capacity or 75% of tipping load. Weight of all lifting accessories must be deducted from the above lifting capacities. Lifting capacities are based on the machine standing on a firm, uniform supporting surface. The use of a work tool attachment point to handle/lift objects, could affect the machine lift performance.

Lift capacity stays with ±5% for all available track shoes.

Always refer to the appropriate Operation and Maintenance Manual for specific product information.

# 330F Hydraulic Excavator Specifications

## Bucket Specifications and Compatibility

|  | Linkage | Width<br>mm | Capacity<br>m <sup>3</sup> | Weight<br>kg | Fill<br>% | 330F L     |       | 330F LN    |       |
|--|---------|-------------|----------------------------|--------------|-----------|------------|-------|------------|-------|
|  |         |             |                            |              |           | Reach Boom |       | Reach Boom |       |
|  |         |             |                            |              |           | R3.2       | R2.65 | R3.2       | R2.65 |
| <b>Without Quick Coupler</b>                 |         |             |                            |              |           |            |       |            |       |
| General Duty (GD)                            | CB      | 750         | 0.71                       | 730          | 100       | ●          | ●     | ●          | ●     |
|  | CB      | 1050        | 1.12                       | 864          | 100       | ●          | ●     | ●          | ●     |
|  | CB      | 1200        | 1.33                       | 927          | 100       | ●          | ●     | ●          | ●     |
|  | CB      | 1350        | 1.54                       | 1009         | 100       | ●          | ●     | ⊙          | ●     |
|  | CB      | 1500        | 1.76                       | 1074         | 100       | x          | ●     | x          | ⊙     |
| Heavy Duty (HD)                              | CB      | 1350        | 1.54                       | 1134         | 100       | ●          | ●     | ⊙          | ●     |
|  | CB      | 1500        | 1.76                       | 1229         | 100       | x          | ●     | x          | ⊙     |
| Severe Duty (SD)                             | CB      | 1350        | 1.56                       | 1245         | 90        | ●          | ●     | ⊙          | ●     |
| Maximum load pin-on (payload + bucket)       |         |             |                            |              | kg        | 4485       | 4955  | 3970       | 4400  |
| <b>With Center-Lock™ Coupler</b>             |         |             |                            |              |           |            |       |            |       |
| General Duty (GD)                            | CB      | 750         | 0.71                       | 730          | 100       | ●          | ●     | ●          | ●     |
|  | CB      | 1050        | 1.12                       | 864          | 100       | ●          | ●     | ●          | ●     |
|  | CB      | 1200        | 1.33                       | 927          | 100       | ●          | ●     | ⊙          | ●     |
|  | CB      | 1350        | 1.54                       | 1009         | 100       | ⊙          | ●     | ⊖          | ⊙     |
|  | CB      | 1500        | 1.76                       | 1074         | 100       | ⊖          | ⊙     | ○          | ⊖     |
| Heavy Duty (HD)                              | CB      | 1350        | 1.54                       | 1134         | 100       | ⊙          | ●     | ⊖          | ⊙     |
|  | CB      | 1500        | 1.76                       | 1229         | 100       | ⊖          | ⊙     | ○          | ⊖     |
| Severe Duty (SD)                             | CB      | 1350        | 1.56                       | 1245         | 90        | ⊙          | ●     | ⊖          | ⊙     |
| Maximum load with coupler (payload + bucket) |         |             |                            |              | kg        | 3980       | 4450  | 3465       | 3895  |

### Maximum Material Density:

- 2100 kg/m<sup>3</sup>
- ⊙ 1800 kg/m<sup>3</sup>
- ⊖ 1500 kg/m<sup>3</sup>
- 1200 kg/m<sup>3</sup>
- x Not recommended

The above loads are in compliance with hydraulic excavator standard EN474. They do not exceed 87% of hydraulic lifting capacity or 75% of tipping capacity over the side with front linkage fully extended at ground line with bucket curled.

Capacity based on ISO 7451.

Bucket weight with General Duty tips.

Caterpillar recommends using appropriate work tools to maximize the value customers receive from our products. Use of work tools, including buckets, which are outside of Caterpillar's recommendations or specifications for weight, dimensions, flows, pressures, etc. may result in less-than-optimal performance, including but not limited to reductions in production, stability, reliability, and component durability. Improper use of a work tool resulting in sweeping, prying, twisting and/or catching of heavy loads will reduce the life of the boom and stick.

# 330F Hydraulic Excavator Specifications

## Bucket Specifications and Compatibility

|  | Linkage | Width<br>mm | Capacity<br>m <sup>3</sup> | Weight<br>kg | Fill<br>% | 330F L     |       | 330F LN    |       |
|--|---------|-------------|----------------------------|--------------|-----------|------------|-------|------------|-------|
|  |         |             |                            |              |           | Reach Boom |       | Reach Boom |       |
|  |         |             |                            |              |           | R3.2       | R2.65 | R3.2       | R2.65 |
| <b>With Quick Coupler (CW45, CW45s)</b>      |         |             |                            |              |           |            |       |            |       |
| General Duty (GD)                            | CB      | 750         | 0.7                        | 693          | 100       | ●          | ●     | ●          | ●     |
|  | CB      | 1350        | 1.5                        | 1008         | 100       | ⊙          | ●     | ⊖          | ⊙     |
|  | CB      | 1500        | 1.76                       | 1074         | 100       | ⊖          | ⊙     | ○          | ⊖     |
|  | CB      | 1650        | 1.97                       | 1157         | 100       | ⊖          | ⊖     | ○          | ○     |
| Heavy Duty (HD)                              | CB      | 1200        | 1.33                       | 1061         | 100       | ●          | ●     | ⊙          | ●     |
|  | CB      | 1350        | 1.54                       | 1134         | 100       | ⊙          | ●     | ⊖          | ⊙     |
|  | CB      | 1500        | 1.76                       | 1229         | 100       | ⊖          | ⊙     | ○          | ⊖     |
|  | CB      | 1650        | 1.97                       | 1302         | 100       | ○          | ⊖     | ◇          | ○     |
| Maximum load with coupler (payload + bucket) |         |             |                            |              | kg        | 4021       | 4491  | 3506       | 3936  |

### Maximum Material Density:

- 2100 kg/m<sup>3</sup>
- ⊙ 1800 kg/m<sup>3</sup>
- ⊖ 1500 kg/m<sup>3</sup>
- 1200 kg/m<sup>3</sup>
- ◇ 900 kg/m<sup>3</sup>

The above loads are in compliance with hydraulic excavator standard EN474. They do not exceed 87% of hydraulic lifting capacity or 75% of tipping capacity over the side with front linkage fully extended at ground line with bucket curled.

Capacity based on ISO 7451.

Bucket weight with General Duty tips.

Caterpillar recommends using appropriate work tools to maximize the value customers receive from our products. Use of work tools, including buckets, which are outside of Caterpillar's recommendations or specifications for weight, dimensions, flows, pressures, etc. may result in less-than-optimal performance, including but not limited to reductions in production, stability, reliability, and component durability. Improper use of a work tool resulting in sweeping, prying, twisting and/or catching of heavy loads will reduce the life of the boom and stick.

# 330F Hydraulic Excavator Specifications

## 330F L Work Tool Offering Guide\*

| Boom Type                         | Reach Boom   |  |
|-----------------------------------|--|--|
| Stick Size                        | R3.2   | R2.65  |
| Hydraulic Hammer                  | H120E s<br>H130E s<br>H140E s  | H120E s<br>H130E s<br>H140E s  |
| Multi-Processor                   | MP324 CC Jaw<br>MP324 D Jaw<br>MP324 P Jaw**<br>MP324 S Jaw<br>MP324 TS Jaw**<br>MP324 U Jaw | MP324 CC Jaw<br>MP324 D Jaw<br>MP324 P Jaw<br>MP324 S Jaw<br>MP324 TS Jaw<br>MP324 U Jaw |
| Crusher                           | P325   | P325   |
| Pulverizer                        | P225   | P225   |
| Demolition and Sorting Grapple    | G320B<br>G325B**   | G320B<br>G325B   |
| Mobile Scrap and Demolition Shear | S320B<br>S325B***<br>S340B#  | S320B<br>S325B<br>S340B#   |
| Compactor (Vibratory Plate)       | CVP110   | CVP110   |
| Orange Peel Grapple               |  |  |
| Center-Lock Pin Grabber Coupler   |  |  |
| CW Dedicated Quick Coupler        |  |  |

These work tools are available for the 330F L.  
Consult your Cat dealer for proper match.

\*Matches are dependent on excavator configurations. Consult your Cat dealer for proper work tool match.

\*\*Pin-on or dedicated coupler.

\*\*\*Pin-on only.

#Boom mount.

# 330F Hydraulic Excavator Specifications

## 330F LN Work Tool Offering Guide\*

| Boom Type                         | Reach Boom   |  |
|-----------------------------------|--|--|
| Stick Size                        | R3.2   | R2.65  |
| Hydraulic Hammer                  | H120E s<br>H130E s<br>H140E s  | H120E s<br>H130E s<br>H140E s  |
| Multi-Processor                   | MP324 CC Jaw**^<br>MP324 D Jaw**^<br>MP324 P Jaw**^<br>MP324 S Jaw^<br>MP324 TS Jaw**^<br>MP324 U Jaw**^ | MP324 CC Jaw<br>MP324 D Jaw<br>MP324 P Jaw<br>MP324 S Jaw<br>MP324 TS Jaw<br>MP324 U Jaw |
| Crusher                           | P325^^   | P325   |
| Pulverizer                        | P225^^   | P225   |
| Demolition and Sorting Grapple    | G320B**^<br>G325B***   | G320B<br>G325B**^  |
| Mobile Scrap and Demolition Shear | S320B<br>S325B***<br>S340B#  | S320B<br>S325B**^<br>S340B#  |
| Compactor (Vibratory Plate)       | CVP110   | CVP110   |
| Orange Peel Grapple               |  |  |
| Center-Lock Pin Grabber Coupler   |  |  |
| CW Dedicated Quick Coupler        |  |  |

These work tools are available for the 330F LN.  
Consult your Cat dealer for proper match.

\*Matches are dependent on excavator configurations. Consult your Cat dealer for proper work tool match.

\*\*Pin-on or dedicated coupler.

\*\*\*Pin-on only.

#Boom mount.

^Over the front only with dedicated coupler.

^^Over the front only with Center-Lock coupler.

## Standard Equipment

Standard equipment may vary. Consult your Cat dealer for details.

### CAB

- Parallel wiper and washer
- Mirrors
- Pressurized operator station with positive filtration
- Laminated glass front upper window and tempered other windows
- Sliding upper door window (left-hand cab door)
- Openable skylight as emergency exit
- Interior
  - Glass-breaking safety hammer
  - Coat hook
  - Beverage holder
  - Literature holder
  - Interior lighting
  - AM/FM radio mounting (DIN size)
  - Two 12V stereo speakers
  - Storage shelf suitable for lunch or toolbox
  - Power supply with 12V, two power outlets (10 amp)
  - Thumb wheel modulation joystick for use with combined auxiliary control
  - Air conditioner, heater and defroster with climate control
- Seat
  - Seat belt, 51 mm
  - Adjustable armrest
  - Height adjustable joystick consoles
  - Neutral lever (lock out) for all controls
  - Travel control pedals with removable hand levers
  - Capability of installing two additional pedals
  - Two speed travel
  - Floor mat, washable
  - Adjustable high-back, heated and ventilated seat with air suspension
- Monitor
  - Clock
  - Video ready
  - Color LCD display with warning, filter/fluid change, and working hour information
  - Language display (full graphic and full color display)
  - Machine condition, error code and tool mode setting information
  - Start-up level check for engine oil, engine coolant and hydraulic oil
  - Warning, filter/fluid change and working hour information
  - Fuel consumption meter

### ELECTRICAL

- 115 amp alternator
- Circuit breaker
- Battery, maintenance free

### ENGINE

- Cat C7.1 ACERT diesel engine
- Stage IV emission package
- 4600 m altitude capability with derate from 3000 m
- Up to B20 biodiesel capable
- Automatic engine speed control
- Electric priming pump
- Water separator in fuel line including water level sensor and indicator
- Economy and standard power modes
- Air cleaner
- Radial seal air filter
- Variable fan speed
- High ambient capability, 52° C

### HYDRAULIC SYSTEM

- Boom and stick lowering control devices with SmartBoom
- Reverse swing dampening valve
- Automatic swing parking brake
- High-performance hydraulic return filter
- Regeneration circuit for boom and stick
- Capability of installing additional auxiliary circuits
- Up to B20 bio oil capable
- Heavy lift mode
- Sampling ports for Scheduled Oil Sampling (S·O·S<sup>SM</sup>)
- Tilt up Air-to-Air Aftercooler (ATAAC) for easy maintenance

### LIGHTS

- Cab and boom lights with 90 second time delay
- Exterior lights integrated into storage box

### UNDERCARRIAGE/UPPERFRAME

- Long or Long Narrow undercarriage
- Grease Lubricated Track GLT2, resin seal
- Heavy duty track roller and idler
- Towing eye on base frame
- Counterweight, 5.8 mt
- HD bottom guards
- HD travel motor guards

### SAFETY AND SECURITY

- Cat one key security system
- Door locks
- Cap locks on fuel and hydraulic tanks
- Lockable external tool/storage box
- Signaling/warning horn
- Secondary engine shutoff switch
- Mirrors
- Rear vision camera
- Capability to connect a beacon
- Bolt on FOGS capability

### INTEGRATED TECHNOLOGIES

- Product Link

# 330F Optional Equipment

## Optional Equipment

Optional equipment may vary. Consult your Cat dealer for details.

### FRONT LINKAGE

- Reach Boom 6.15 m (with or without Cat Grade Control)
  - R3.2 CB2 (with or without CGC)
  - R2.65CB2
  - CB2-family bucket linkage (with lifting eye)
- CW Dedicated or Cat Pin Grabber couplers

### TRACK

- 900 mm triple grouser
- 800 mm triple grouser
- 700 mm triple grouser
- 600 mm triple grouser HD
- 600 mm triple grouser

### GUARDS

- FOGS (Falling Object Guard System) including overhead and windshield guards
- Vandalism guard
- Mesh guard
- Track guiding guards
  - Full length
  - Segmented, three pieces

### CAB

- Cab front rain protector
- Windshield
  - 70-30 split, sliding, removable lower windshield with in cab storage bracket
  - One-piece, fixed

### HYDRAULIC SYSTEM

- HP hydraulic lines for boom and stick
- MP hydraulic lines for boom and stick
- QC hydraulic lines for boom and stick
- QC control

### ELECTRICAL

- Cold weather starting package, –32° C
- Travel alarm
- Electric refueling pump, with auto shutoff and storage
- Jumpstart

### INTEGRATED TECHNOLOGIES

- Cat Grade Control

### ENGINE

- Quick drains, engine and hydraulic oil (QuickEvac™)

### SECURITY

- Cat MSS (anti-theft device)
- FOGS



For more complete information on Cat products, dealer services, and industry solutions, visit us on the web at [www.cat.com](http://www.cat.com)

AEHQ7632-01 (07-2016)  
Replaces AEHQ7632

© 2016 Caterpillar  
All rights reserved

Materials and specifications are subject to change without notice. Featured machines in photos may include additional equipment. See your Cat dealer for available options.

CAT, CATERPILLAR, SAFETY.CAT.COM, their respective logos, "Caterpillar Yellow" and the "Power Edge" trade dress, as well as corporate and product identity used herein, are trademarks of Caterpillar and may not be used without permission.

VisionLink is a trademark of Trimble Navigation Limited, registered in the United States and in other countries.

