



# 352

## Long Reach Hydraulic Excavator

# Technical Specifications

Configurations and features may vary by region. Please consult your Cat® dealer for availability in your area.

### Table of Contents

<b>Specifications</b> .....	<b>2</b>
Engine .....	2
Swing Mechanism .....	2
Weights .....	2
Track .....	2
Drive .....	2
Hydraulic System .....	2
Service Refill Capacities .....	2
Standards .....	3
Sound Performance .....	3
Air Conditioning System .....	3
Operating Weights and Ground Pressures .....	4
Major Component Weights .....	4
Dimensions .....	5
Working Ranges and Forces .....	7
Long Reach Excavator (LRE) Boom Lift Capacities – Counterweight: 12.0 mt (26,455 lb) .....	8
Typical Pass Match Guide .....	14
Bucket Specifications and Compatibility	
Europe .....	15
North America .....	16
Attachments Offering Guide:	
North America .....	17
Europe .....	18
<b>Standard and Optional Equipment</b> .....	<b>19</b>
<b>Dealer Installed Kits and Attachments</b> .....	<b>21</b>
<b>Cab Options</b> .....	<b>22</b>
<b>352 LRE Environmental Declaration</b> .....	<b>23</b>

# 352 Long Reach Hydraulic Excavator Specifications

## Engine

Engine Model	Cat® C13B	
Net Power		
ISO 9249	330 kW	443 hp
ISO 9249 (DIN)	449 hp (metric)	
Engine Power		
ISO 14396	332 kW	445 hp
ISO 14396 (DIN)	451 hp (metric)	
Bore	130 mm	5 in
Stroke	157 mm	6 in
Displacement	12.5 L	763 in <sup>3</sup>
Biodiesel Capability	Up to B20 <sup>(1)</sup>	

- Meets U.S. EPA Tier 4 Final, EU Stage V, and Japan 2014 emission standards.
- Recommended for use up to 4500 m (14,760 ft) altitude with engine power derate above 2600 m (8,530 ft).
- Advertised power is tested per the specified standard in effect at the time of manufacture.
- Net power advertised is the power available at the flywheel when the engine is equipped with fan, air intake system, exhaust system and alternator.
- Engine speed at 1,800 rpm

<sup>(1)</sup>Cat diesel engines are required to use ULSD (ultra-low sulfur diesel fuel with 15 ppm of sulfur or less) and are compatible\* with ULSD blended with the following lower-carbon intensity fuels\*\* up to:

- ✓ 20% biodiesel FAME (fatty acid methyl ester) \*\*\*
- ✓ 100% renewable diesel, HVO (hydrotreated vegetable oil) and GTL (gas-to-liquid) fuels

Refer to guidelines for successful application. Please consult your Cat dealer or “Caterpillar Machine Fluids Recommendations” (SEBU6250) for details.

\* While Cat engines are compatible with these alternative fuels, some regions may not allow their use.

\*\* Tailpipe greenhouse gas emissions from lower-carbon intensity fuels are essentially the same as traditional fuels.

\*\*\* Engines with no aftertreatment devices are compatible with higher blends, up to 100% biodiesel (for use of blends higher than 20% biodiesel, consult your Cat dealer).

## Swing Mechanism

Maximum Swing Torque	189 kN·m	139,000 lbf·ft
----------------------	----------	----------------

## Weights

Operating Weight	58 100 kg	128,100 lb
------------------	-----------	------------

- Variable Gauge High Wide undercarriage, LRE boom, LRE 8.5B (27'9") stick, Heavy Duty (HD) 1.00 m<sup>3</sup> (1.31 yd<sup>3</sup>) bucket, 900 mm (35") triple grouser shoes, 12.0 mt (26,455 lb) counterweight.

## Track

Track Shoes Width	900 mm	35 in
Track Shoes Width	750 mm	30 in
Track Shoes Width	600 mm	24 in
Number of Shoes (each side)	52	
Number of Track Rollers (each side)	9	
Number of Carrier Rollers (each side)	3	

## Drive

Gradeability	35°/70%	
Maximum Travel Speed	4.5 km/h	2.8 mph
Maximum Drawbar Pull	346 kN	77,784 lbf

## Hydraulic System

Main System – Maximum Flow – Implement	779 L/min (389 × 2 pumps)	206 gal/min (103 × 2 pumps)
Maximum Pressure – Equipment – Implement	35 000 kPa	5,076 psi
Maximum Pressure – Equipment – Lift Mode	38 000 kPa	5,511 psi
Maximum Pressure – Travel	35 000 kPa	5,076 psi
Maximum Pressure – Swing	26 000 kPa	3,771 psi
Boom Cylinder – Bore	170 mm	7 in
Boom Cylinder – Stroke	1524 mm	60 in
Stick Cylinder – Bore	190 mm	7 in
Stick Cylinder – Stroke	1758 mm	69 in
Bucket Cylinder – Bore	120 mm	5 in
Bucket Cylinder – Stroke	1104 mm	43 in

## Service Refill Capacities

Fuel Tank Capacity	715 L	188.9 gal
Cooling System	52 L	13.7 gal
Engine Oil (with filter)	40 L	10.6 gal
Swing Drive	10.5 L	2.8 gal
Final Drive (each)	9.5 L	2.5 gal
Hydraulic System (including tank)	550 L	145.3 gal
Hydraulic Tank (including suction pipe)	217 L	57.3 gal
Diesel Exhaust Fluid (DEF) Tank	80 L	21.1 gal

# 352 Long Reach Hydraulic Excavator Specifications

## Standards

Brakes	ISO 10265:2008
Cab/Operator Protective Guards (OPG) (optional)	ISO 10262:1998 Level II

## Sound Performance

ISO 6395:2008 (external)	108 dB(A)
ISO 6396:2008 (inside cab)	72 dB(A)

- External Sound – The labeled spectator sound power level represents the Guaranteed Value per 2000/14/EC amended by 2005/88/EC, when properly equipped, and is measured according to the test procedures and conditions specified in ISO 6395:2008. The measurements were conducted at 70% of the maximum engine cooling fan speed.
- Internal Sound – The operator sound pressure level is measured according to the test procedures and conditions specified in ISO 6396:2008 for a cab offered by Caterpillar, when properly installed and maintained and tested with the door and windows closed. The measurements were conducted at 70% of the maximum engine cooling fan speed.
- Hearing protection may be needed when operating with an open operator station and cab (when not properly maintained for doors/windows open) for extended periods or in noisy environment(s).

## Air Conditioning System

- The air conditioning system on this machine contains the fluorinated greenhouse gas refrigerant R134a or R1234yf. See the label or instruction manual for identification of the gas.
  - If equipped with R134a (Global Warming Potential = 1430), the system contains 1.0 kg (2.2 lb) of refrigerant which has a CO<sub>2</sub> equivalent of 1.430 metric tonnes (1.576 tons).
  - If equipped with R1234yf (Global Warming Potential = 0.501), the system contains 0.85 kg (1.87 lb) of refrigerant which has a CO<sub>2</sub> equivalent of 0.001 metric tonnes (0.001 tons).

# 352 Long Reach Hydraulic Excavator Specifications

## Operating Weights and Ground Pressures

	600 mm (24") Triple Grouser Shoes		600 mm (24") Double Grouser Shoes		750 mm (30") Triple Grouser Shoes		900 mm (35") Triple Grouser Shoes	
	Weight	Ground Pressure	Weight	Ground Pressure	Weight	Ground Pressure	Weight	Ground Pressure
	kg (lb)	kPa (psi)	kg (lb)	kPa (psi)	kg (lb)	kPa (psi)	kg (lb)	kPa (psi)
<b>Base Frame with Single Flange Track Rollers and Carrier Rollers</b>								
<b>12.0 mt (26,455 lb) Counterweight + Variable Gauge High Wide Long Undercarriage Base Machine</b>								
LRE Boom + LRE 8.5 m (27'9") B1 Stick	56 600	98.3	56 700	98.6	57 400	79.9	58 100	67.5
+ 1.00 m <sup>3</sup> (1.31 yd <sup>3</sup> ) HD Bucket	(124,800)	(14.3)	(125,100)	(14.3)	(126,500)	(11.6)	(128,100)	(9.8)
<b>Base Frame with Double Flange Track Rollers and Carrier Rollers</b>								
<b>12.0 mt (26,455 lb) Counterweight + Variable Gauge High Wide Long Undercarriage Base Machine</b>								
LRE Boom + LRE 8.5 m (27'9") B1 Stick	56 700	98.3	56 800	98.6	57 400	79.9	58 200	67.5
+ 1.00 m <sup>3</sup> (1.31 yd <sup>3</sup> ) HD Bucket	(124,900)	(14.3)	(125,200)	(14.3)	(126,600)	(11.6)	(128,200)	(9.8)

All operating weights include a 90% fuel tank with 75 kg (165 lb) operator.

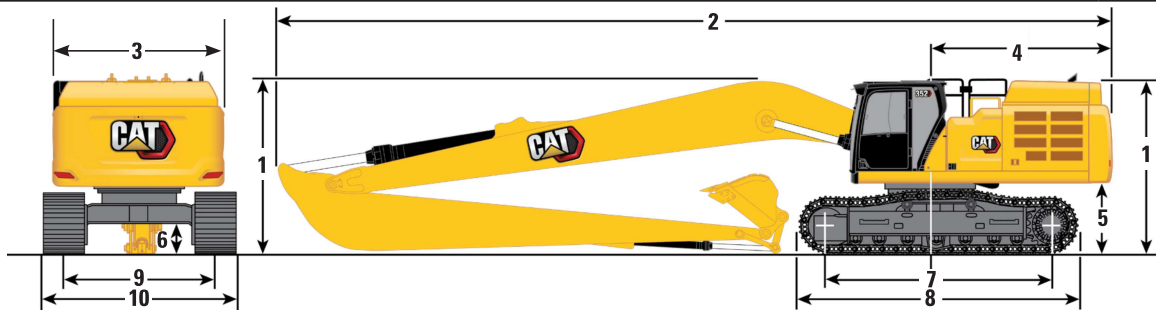
## Major Component Weights

	kg	lb
Base Machine Weight with 12.0 mt (26,455 lb) counterweight, LRE swing frame, boom cylinders, base frame with single flange track rollers and carrier rollers	39 750	87,640
Base Machine Weight with 12.0 mt (26,455 lb) counterweight, LRE Swing Frame, boom cylinders, base frame with double flange track rollers and carrier rollers	39 800	87,740
Track Shoes:		
600 mm (24") Width, 15.5 mm (0.6") Thick, Triple Grouser Track Shoes	5290	11,660
600 mm (24") Width, 15.5 mm (0.6") Thick, Double Grouser Track Shoes	5410	11,920
750 mm (30") Width, 15.5 mm (0.6") Thick, Triple Grouser Track Shoes	6040	13,310
900 mm (35") Width, 15.5 mm (0.6") Thick, Triple Grouser Track Shoes	6770	14,930
Two Boom Cylinders	960	2,130
Weight of 90% Fuel Tank and 75 kg (165 lb) Operator	630	1,380
Counterweight:		
12.0 mt (26,455 lb) Counterweight	12 000	26,460
Swing Frame:		
LRE Swing Frame	4340	9,570
Variable Gauge High Wide Undercarriage:		
Base Frame with SF Track Rollers and Carrier Rollers	14 030	30,940
Base Frame with DF Track Rollers and Carrier Rollers	14 080	31,040
Booms (including lines, pins, stick cylinder):		
LRE Boom 11.5 m (37'9")	6510	14,360
Sticks (including lines, pins, bucket cylinder, bucket linkage):		
LRE Stick 8.5 m (27'11")	3600	7,930
Buckets (without linkage):		
1.00 m <sup>3</sup> (1.31 yd <sup>3</sup> ) HD for B1 Linkage	850	1,870
Quick Couplers:		
CW Dedicated	250	550
Pin Grabber	380	840

# 352 Long Reach Hydraulic Excavator Specifications

## Dimensions

All dimensions are approximate and may vary depending on bucket selection.



**Boom Option**

**LRE Boom  
11.5 m (37'7")**

**Stick Option**

**LRE Stick  
LR8.5B1 (27'9")**

### 1 Machine Height:

Cab Height	3390 mm	11'1"
OPG Height	3540 mm	11'7"
Handrail Height	3540 mm	11'7"
With Boom/Stick/Bucket Installed	3740 mm	12'3"
With Boom/Stick Installed	3740 mm	12'3"
With Boom Installed	3410 mm	11'2"
With Boom/Stick/Bucket Installed (with Auxiliary Lines)	3780 mm	12'4"
With Boom/Stick Installed (with Auxiliary Lines)	3780 mm	12'4"
With Boom Installed (with Auxiliary Lines)	3460 mm	11'4"

### 2 Machine Length:

With Boom/Stick/Bucket Installed	16 450 mm	53'11"
With Boom/Stick Installed	16 450 mm	53'11"
With Boom Installed	15 310 mm	50'2"
With Boom/Stick/Bucket Installed (with Auxiliary Lines)	16 450 mm	53'11"
With Boom/Stick Installed (with Auxiliary Lines)	16 450 mm	53'11"
With Boom Installed (with Auxiliary Lines)	15 310 mm	50'2"

### 3 Upperframe Width (without Handles)

3020 mm 9'10"

### 4 Tail Swing Radius

3760 mm 12'4"

### 5 Counterweight Clearance without Shoe Lug

1445 mm 4'8"

### 6 Ground Clearance without Shoe Lug

710 mm 2'3"

### 7 Length to Center of Rollers

4340 mm 14'2"

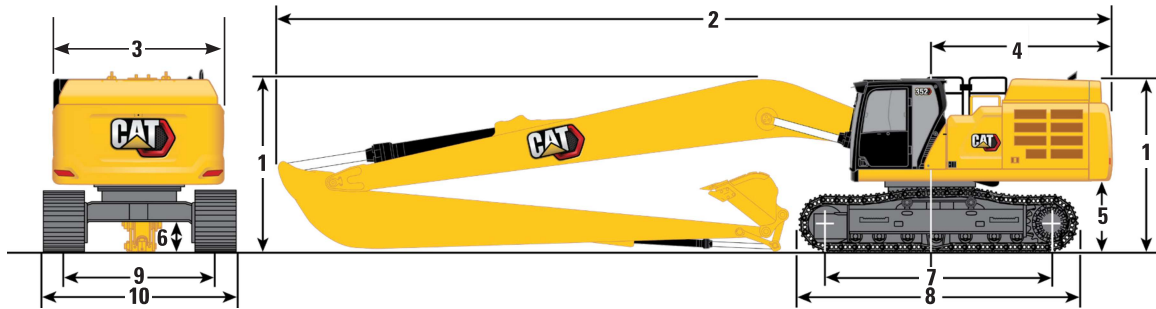
Bucket Type	HD	
Bucket Capacity	1.00 m <sup>3</sup>	1.31 yd <sup>3</sup>
Bucket Tip Radius	1577 mm	5'2"

(continued on next page)

# 352 Long Reach Hydraulic Excavator Specifications

## Dimensions (continued)

All dimensions are approximate and may vary depending on bucket selection.



**Boom Option**

**LRE Boom  
11.5 m (37'9")**

**Stick Option**

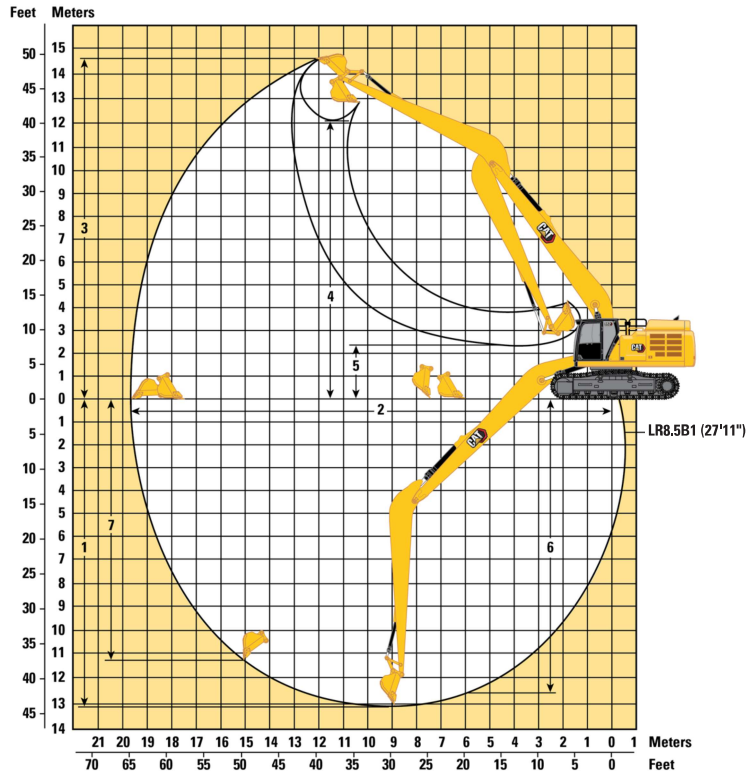
**LRE Stick  
LR8.5B1 (27'11")**

<b>8</b> Track Length	5350 mm	17'6"
<b>9</b> Track Gauge:		
Retracted	3220 mm	10'6"
Extended	3720 mm	12'2"
<b>10</b> Undercarriage Width (with steps): Retracted		
600 mm (24") Shoes	4010 mm	13'1"
750 mm (30") Shoes	4010 mm	13'1"
900 mm (35") Shoes	4120 mm	13'6"
Undercarriage Width (with steps): Extended		
600 mm (24") Shoes	4510 mm	14'9"
750 mm (30") Shoes	4510 mm	14'9"
900 mm (35") Shoes	4620 mm	15'1"
Bucket Type		HD
Bucket Capacity	1.00 m <sup>3</sup>	1.31 yd <sup>3</sup>
Bucket Tip Radius	1577 mm	5'2"

# 352 Long Reach Hydraulic Excavator Specifications

## Working Ranges and Forces

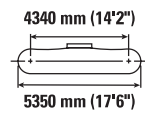
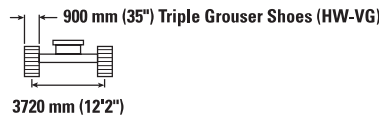
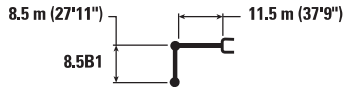
All dimensions are approximate and may vary depending on bucket selection.

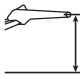



<b>Boom Option</b>	<b>LRE Boom 11.5 m (37'9")</b>	
<b>Stick Option</b>	<b>LRE Stick LR8.5B1 (27'11")</b>	
<b>1</b> Maximum Digging Depth	13 040 mm	42'9"
<b>2</b> Maximum Reach at Ground Line	19 640 mm	64'5"
<b>3</b> Maximum Cutting Height	14 700 mm	48'2"
<b>4</b> Maximum Loading Height	12 030 mm	39'5"
<b>5</b> Minimum Loading Height	2250 mm	7'4"
<b>6</b> Maximum Depth Cut for 2440 mm (8 ft) Level Bottom	12 970 mm	42'6"
<b>7</b> Maximum Vertical Wall Digging Depth	11 280 mm	37'0"
Bucket Digging Force (ISO)	141 kN	31,700 lbf
Stick Digging Force (ISO)	104 kN	23,380 lbf
Bucket Type	HD	
Bucket Capacity	1.00 m <sup>3</sup>	1.31 yd <sup>3</sup>
Bucket Tip Radius	1577 mm	5'2"

# 352 Long Reach Hydraulic Excavator Specifications

## LRE Boom Lift Capacities – Counterweight: 12.0 mt (26,455 lb) – without Bucket, Heavy Lift: On



	3000 mm/10'0"		4500 m/15'0"		6000 m/20'0"		7500 m/25'0"		9000 m/30'0"				m ft/in	
	kg lb	kg lb	kg lb	kg lb	kg lb	kg lb	kg lb	kg lb	kg lb	kg lb	kg lb	kg lb		
13 500 mm 45'0"												*2900	*2900	14 410
12 000 mm 40'0"												*2850	*2850	15 460
10 500 mm 35'0"												*6,200	*6,200	50'03"
9000 mm 30'0"												*2800	*2800	16 300
7500 mm 25'0"												*6,200	*6,200	53'02"
6000 mm 20'0"												*2850	*2850	16 970
4500 mm 15'0"												*6,250	*6,250	55'05"
3000 mm 10'0"												*2900	*2900	17 490
1500 mm 5'0"												*6,350	*6,350	57'02"
0 mm 0'0"												*3000	*3000	17 860
-1500 mm -5'0"												*6,550	*6,550	58'06"
-3000 mm -10'0"												*3100	*3100	18 100
-4500 mm -15'0"												*6,850	*6,850	59'03"
-6000 mm -20'0"												*3300	*3300	18 210
-7500 mm -25'0"												*7,200	*7,200	59'08"
-9000 mm -30'0"												*3500	*3500	18 190
-10500 mm -35'0"												*7,650	*7,650	59'08"
0 mm 0'0"	kg lb	*4050 *9,050	*4050 *9,050	*7100 *16,050	*7100 *16,050	*13 200 *30,350	*13 200 *30,350	*13 700 *29,600	13 150 28,350	*11 100 *23,950	10 300 22,150	*3750 *8,300	3550 7,750	18 060 59'02"
-1500 mm -5'0"	kg lb	*5400 *12,050	*5400 *12,050	*7700 *17,300	*7700 *17,300	*12 250 *27,850	*12 250 *27,850	*14 000 *30,300	12 450 26,750	*11 350 *24,600	9700 20,900	*4100 *9,050	3550 7,750	17 790 58'03"
-3000 mm -10'0"	kg lb	*6750 *15,000	*6750 *15,000	*8750 *19,650	*8750 *19,650	*12 550 *28,450	*12 550 *28,450	*14 000 *30,250	12 000 25,800	11 050 23,800	9300 20,050	4300 9,450	3600 7,900	17 390 56'11"
-4500 mm -15'0"	kg lb	*8100 *18,100	*8100 *18,100	*10 050 *22,500	*10 050 *22,500	*13 550 *30,650	*13 550 *30,650	*13 650 *29,550	11 800 25,350	10 800 23,300	9100 19,550	4450 9,850	3750 8,250	16 840 55'01"
-6000 mm -20'0"	kg lb	*9550 *21,300	*9550 *21,300	*11 500 *25,850	*11 500 *25,850	*15 000 *33,900	*15 000 *33,900	*13 050 *28,200	11 750 25,250	10 750 23,100	9000 19,400	4750 10,450	4000 8,800	16 130 52'08"
-7500 mm -25'0"	kg lb			*13 200 *29,650	*13 200 *29,650	*14 650 *31,600	*14 650 *31,600	*12 150 *26,150	11 850 25,450	*10 200 *22,000	9050 19,450	5150 11,450	4350 9,600	15 250 49'08"
-9000 mm -30'0"	kg lb			*15 050 *33,350	*15 050 *33,350	*12 900 *27,650	*12 900 *27,650	*10 850 *23,300	*10 850 *23,300	*9250 *19,750	9200 *19,750	*6250 *11,550	4900 10,950	14 140 45'11"
-10500 mm -35'0"	kg lb							*9150 *19,400	*9150 *19,400	*7850 *16,600	*7850 *16,600	*5050 *11,050	*5050 *11,050	12 770 41'03"



ISO 10567:2007



\* Indicates that the load is limited by hydraulic lifting capacity rather than tipping load. The above loads are in compliance with hydraulic excavator lift capacity standard ISO 10567:2007. They do not exceed 87% of hydraulic lifting capacity or 75% of tipping load. Weight of all lifting accessories must be deducted from the above lifting capacities. Lifting capacities are based on the machine standing on a firm, uniform supporting surface. The use of a work tool attachment point to handle/lift objects, could affect the machine lift performance.

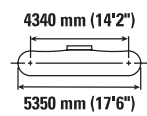
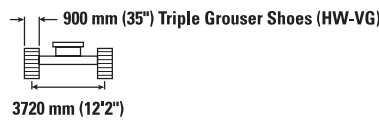
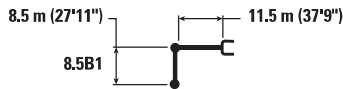
Lift capacity stays with ±5% for all available track shoes.

Always refer to the appropriate Operation and Maintenance Manual for specific product information.

(continued on next page)

# 352 Long Reach Hydraulic Excavator Specifications

## LRE Boom Lift Capacities – Counterweight: 12.0 mt (26,455 lb) – without Bucket, Heavy Lift: On (continued)



		10 500 m/35'0"		12 000 m/40'0"		13 500 m/45'0"		15 000 m/50'0"		16 500 m/55'0"		18 000 m/60'0"		m ft/in		
		kg lb	kg lb	kg lb	kg lb	kg lb	kg lb	kg lb	kg lb	kg lb	kg lb	kg lb	kg lb	kg lb	kg lb	kg lb
13.5 m 45.0 ft	kg lb													*2900	*2900	14 410
12.0 m 40.0 ft	kg lb							*3300 *6,450	*3300 *6,450					*2850 *6,200	*2850 *6,200	15 460 50'03"
10.5 m 35.0 ft	kg lb							*4100 *8,400	*4100 *8,400					*2800 *6,200	*2800 *6,200	16 300 53'02"
9.0 m 30.0 ft	kg lb							*4700 *9,900	*4700 *9,900	*3450 *6,700	*3450 *6,700			*2850 *6,250	*2850 *6,250	16 970 55'05"
7.5 m 25.0 ft	kg lb					*5900 *12,800	*5900 *12,800	*5350 *11,250	*5350 *11,250	*4150 *8,350	*4150 *8,350			*2900 *6,350	*2900 *6,350	17 490 57'02"
6.0 m 20.0 ft	kg lb			*6700 *14,550	*6700 *14,550	*6100 *13,250	*6100 *13,250	*5650 *12,250	*5650 *12,250	*4750 *9,750	*4750 *9,750			*3000 *6,550	*3000 *6,550	17 860 58'06"
4.5 m 15.0 ft	kg lb	*7950 *17,250	*7950 *17,250	*7050 *15,300	*7050 *15,300	*6350 *13,800	*6350 *13,800	*5800 *12,600	5550 11,900	*5350 *11,050	4650 9,950	*3300	*3300	*3100 *6,850	*3100 *6,850	18 100 59'03"
3.0 m 10.0 ft	kg lb	*8450 *18,300	*8450 *18,300	*7400 *16,050	*7400 *16,050	*6600 *14,300	6350 13,700	*6000 *12,950	5300 11,400	5250 11,200	4500 9,550	*3650	*3650	*3300 *7,200	*3300 *7,200	18 210 59'08"
1.5 m 5.0 ft	kg lb	*8950 *19,300	8850 19,100	*7750 *16,750	7250 15,600	*6850 *14,800	6050 12,950	5950 12,700	5100 10,900	5050 10,800	4300 9,200	*3900	3650	*3500 *7,650	*3500 *7,650	18 190 59'08"
0 m 0 ft	kg lb	*9300 *20,100	8300 17,900	*8000 *17,200	6850 14,750	6700 14,450	5750 12,350	5700 12,250	4850 10,400	4900 10,450	4150 8,850	*3900	3550	*3750 *8,300	3550 7,750	18 060 59'02"
-1.5 m -5.0 ft	kg lb	9250 19,900	7850 16,950	7650 16,500	6550 14,000	6450 13,900	5500 11,800	5500 11,850	4650 10,000	4750 10,200	4000 8,550			*4100 *9,050	3550 7,750	17 790 58'03"
-3.0 m -10.0 ft	kg lb	8950 19,200	7550 16,250	7400 15,950	6250 13,500	6250 13,450	5300 11,350	5350 11,550	4550 9,700	4650 10,000	3900 8,350			4300 9,450	3600 7,900	17 390 56'11"
-4.5 m -15.0 ft	kg lb	8700 18,750	7350 15,800	7250 15,550	6100 13,100	6150 13,200	5150 11,100	5250 11,350	4450 9,500	4600 9,900	3850 8,250			4450 9,850	3750 8,250	16 840 55'01"
-6.0 m -20.0 ft	kg lb	8600 18,550	7250 15,600	7150 15,400	6000 12,950	6050 13,050	5100 10,950	5250 11,250	4400 9,450					4750 10,450	4000 8,800	16 130 52'08"
-7.5 m -25.0 ft	kg lb	8600 18,550	7250 15,600	7150 15,400	6000 12,950	6100 13,100	5100 11,000	5250 11,250	4450					5150 11,450	4350 9,600	15 250 49'08"
-9.0 m -30.0 ft	kg lb	*7900 *16,850	7350 15,850	*6750 *14,350	6100 13,150	*5700 *12,000	5200 11,250							*5250 *11,550	4900 10,950	14 140 45'11"
-10.5 m -35.0 ft	kg lb	*6700 *14,100	*6700 *14,100	*5600 *11,700	*5600 *11,700									*5050 *11,050	*5050 *11,050	12 770 41'03"



ISO 10567:2007



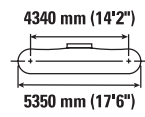
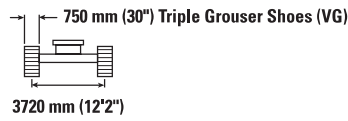
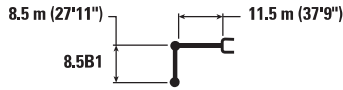
\* Indicates that the load is limited by hydraulic lifting capacity rather than tipping load. The above loads are in compliance with hydraulic excavator lift capacity standard ISO 10567:2007. They do not exceed 87% of hydraulic lifting capacity or 75% of tipping load. Weight of all lifting accessories must be deducted from the above lifting capacities. Lifting capacities are based on the machine standing on a firm, uniform supporting surface. The use of a work tool attachment point to handle/lift objects, could affect the machine lift performance.

Lift capacity stays with ±5% for all available track shoes.

Always refer to the appropriate Operation and Maintenance Manual for specific product information.

# 352 Long Reach Hydraulic Excavator Specifications

## LRE Boom Lift Capacities – Counterweight: 12.0 mt (26,455 lb) – without Bucket, Heavy Lift: On



	3000 mm/10'0"		4500 m/15'0"		6000 m/20'0"		7500 m/25'0"		9000 m/30'0"				m ft/in	
	kg lb	kg lb	kg lb	kg lb	kg lb	kg lb	kg lb	kg lb	kg lb	kg lb	kg lb	kg lb		
13 500 mm 45'0"												*2900	*2900	14 410
12 000 mm 40'0"												*2850	*2850	15 460
10 500 mm 35'0"												*6,200	*6,200	50'03"
9000 mm 30'0"												*2800	*2800	16 300
7500 mm 25'0"												*6,200	*6,200	53'02"
6000 mm 20'0"												*2850	*2850	16 970
4500 mm 15'0"												*6,250	*6,250	55'05"
3000 mm 10'0"												*2900	*2900	17 490
1500 mm 5'0"												*6,350	*6,350	57'02"
0 mm 0'0"												*3000	*3000	17 860
-1500 mm -5'0"												*6,550	*6,550	58'06"
-3000 mm -10'0"												*3100	*3100	18 100
-4500 mm -15'0"												*6,850	*6,850	59'03"
-6000 mm -20'0"												*3300	*3300	18 210
-7500 mm -25'0"												*7,200	*7,200	59'08"
-9000 mm -30'0"												*3500	*3500	18 190
-10500 mm -35'0"												*7,650	*7,650	59'08"
0 mm 0'0"	kg lb	kg lb	kg lb	kg lb	kg lb	kg lb	kg lb	kg lb	kg lb	kg lb	kg lb	kg lb	kg lb	kg lb
-1500 mm -5'0"	*4050 *9,050	*4050 *9,050	*7100 *16,050	*7100 *16,050	*13 200 *30,350	*13 200 *30,350	*13 200 *30,350	*13 700 *29,600	12 950 27,950	*11 100 *23,950	10150 21,800	*3750 *8,300	3450 7,600	18 060 59'02"
-3000 mm -10'0"	*5400 *12,050	*5400 *12,050	*7700 *17,300	*7700 *17,300	*12 250 *27,850	*12 250 *27,850	*14 000 *30,300	12 250 26,350	11 250 24,250	9550 20,550	4100 9,050	3450 7,600	17 790 58'03"	
-4500 mm -15'0"	*6750 *15,000	*6750 *15,000	*8750 *19,650	*8750 *19,650	*12 550 *28,450	*12 550 *28,450	*14 000 *30,250	11 800 25,400	10 850 23,400	9150 19,750	4200 9,300	3550 7,750	17 390 56'11"	
-6000 mm -20'0"	*8100 *18,100	*8100 *18,100	*10 050 *22,500	*10 050 *22,500	*13 550 *30,650	*13 550 *30,650	*13 650 *29,550	11 600 24,900	10 650 22,900	8950 19,250	4400 9,650	3650 8,050	16 840 55'01"	
-7500 mm -25'0"	*9550 *21,300	*9550 *21,300	*11 500 *25,850	*11 500 *25,850	*15 000 *33,900	*15 000 *33,900	*13 050 *28,200	11 550 24,800	10 550 22,700	8850 19,050	4650 10,300	3900 8,600	16 130 52'08"	
-9000 mm -30'0"			*13 200 *29,650	*13 200 *29,650	*14 650 *31,600	*14 650 *31,600	*12 150 *26,150	11 650 25,000	*10 200 *22,000	8900 19,100	5050 11,250	4250 9,450	15 250 49'08"	
-10500 mm -35'0"			*15 050 *33,350	*15 050 *33,350	*12 900 *27,650	*12 900 *27,650	*10 850 *23,300	*10 850 *23,300	*9250 *19,750	9000 19,450	*5250 *11,550	4800 10,750	14 140 45'11"	
							*9150 *19,400	*9150 *19,400	*7850 *16,600	*7850 *16,600	*5050 *11,050	*5050 *11,050	12 770 41'03"	



ISO 10567:2007



\* Indicates that the load is limited by hydraulic lifting capacity rather than tipping load. The above loads are in compliance with hydraulic excavator lift capacity standard ISO 10567:2007. They do not exceed 87% of hydraulic lifting capacity or 75% of tipping load. Weight of all lifting accessories must be deducted from the above lifting capacities. Lifting capacities are based on the machine standing on a firm, uniform supporting surface. The use of a work tool attachment point to handle/lift objects, could affect the machine lift performance.

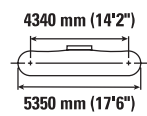
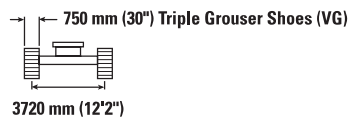
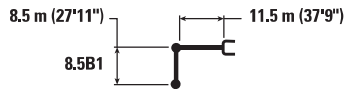
Lift capacity stays with ±5% for all available track shoes.

Always refer to the appropriate Operation and Maintenance Manual for specific product information.

(continued on next page)

# 352 Long Reach Hydraulic Excavator Specifications

## LRE Boom Lift Capacities – Counterweight: 12.0 mt (26,455 lb) – without Bucket, Heavy Lift: On (continued)



Reach m ft	kg lb	10 500 m/35'0"		12 000 m/40'0"		13 500 m/45'0"		15 000 m/50'0"		16 500 m/55'0"		18 000 m/60'0"		m ft/in		
		kg lb	kg lb	kg lb	kg lb	kg lb	kg lb	kg lb	kg lb	kg lb	kg lb	kg lb	kg lb	kg lb	kg lb	
13.5 m 45.0 ft														*2900	*2900	14 410
12.0 m 40.0 ft								*3300 *6,450	*3300 *6,450					*2850 *6,200	*2850 *6,200	15 460 50'03"
10.5 m 35.0 ft								*4100 *8,400	*4100 *8,400					*2800 *6,200	*2800 *6,200	16 300 53'02"
9.0 m 30.0 ft								*4700 *9,900	*4700 *9,900	*3450 *6,700	*3450 *6,700			*2850 *6,250	*2850 *6,250	16 970 55'05"
7.5 m 25.0 ft						*5900 *12,800	*5900 *12,800	*5350 *11,250	*5350 *11,250	*4150 *8,350	*4150 *8,350			*2900 *6,350	*2900 *6,350	17 490 57'02"
6.0 m 20.0 ft				*6700 *14,550	*6700 *14,550	*6100 *13,250	*6100 *13,250	*5650 *12,250	*5650 *12,250	*4750 *9,750	4750			*3000 *6,550	*3000 *6,550	17 860 58'06"
4.5 m 15.0 ft		*7950 *17,250	*7950 *17,250	*7050 *15,300	*7050 *15,300	*6350 *13,800	*6350 *13,800	*5800 *12,600	5500 11,750	5300 *11,050	4600 9,750	*3300	*3300	*3100 *6,850	*3100 *6,850	18 100 59'03"
3.0 m 10.0 ft		*8450 *18,300	*8450 *18,300	*7400 *16,050	*7400 *16,050	*6600 *14,300	6300 13,450	*6000 *12,950	5250 11,200	5150 11,000	4400 9,400	*3650	*3650	*3300 *7,200	*3300 *7,200	18 210 59'08"
1.5 m 5.0 ft		*8950 *19,300	8750 18,800	7750 *16,750	7150 15,400	6850 *14,800	5950 12,750	5850 12,500	5000 10,700	4950 10,650	4250 9,050	*3900	3600	*3500 *7,650	*3500 *7,650	18 190 59'08"
0 m 0 ft		*9300 *20,100	8200 17,600	7900 16,950	6750 14,500	6600 14,200	5650 12,100	5600 12,050	4800 10,250	4800 10,300	4050 8,700	*3900	3500	*3750 *8,300	3450 7,600	18 060 59'02"
-1.5 m -5.0 ft		9100 19,600	7750 16,650	7550 16,200	6400 13,800	6350 13,650	5400 11,600	5400 11,650	4600 9,850	4650 10,000	3950 8,400			*4100 *9,050	3450 7,600	17 790 58'03"
-3.0 m -10.0 ft		8800 18,900	7400 15,950	7300 15,650	6150 13,250	6150 13,200	5200 11,150	5250 11,300	4450 9,500	4550 9,800	3850 8,200			4200 9,300	3550 7,750	17 390 56'11"
-4.5 m -15.0 ft		8550 18,450	7200 15,500	7100 15,300	6000 12,900	6000 12,950	5050 10,900	5200 11,100	4350 9,350	4500 9,700	3800 8,100			4400 9,650	3650 8,050	16 840 55'01"
-6.0 m -20.0 ft		8450 18,200	7100 15,300	7000 15,100	5900 12,700	5950 12,800	5000 10,750	5150 11,050	4300 9,250					4650 10,300	3900 8,600	16 130 52'08"
-7.5 m -25.0 ft		8450 18,250	7100 15,350	7000 15,100	5900 12,700	5950 12,850	5000 10,800	5200 10,800	4350					5050 11,250	4250 9,450	15 250 49'08"
-9.0 m -30.0 ft		*7900 *16,850	7250 15,600	*6750 *14,350	6000 12,950	*5700 *12,000	5100 11,050							*5250 *11,550	4800 10,750	14 140 45'11"
-10.5 m -35.0 ft		*6700 *14,100	*6700 *14,100	*5600 *11,700	*5600 *11,700									*5050 *11,050	*5050 *11,050	12 770 41'03"



ISO 10567:2007



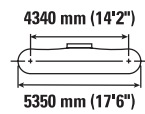
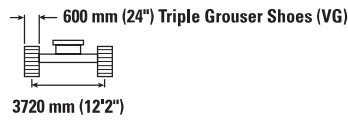
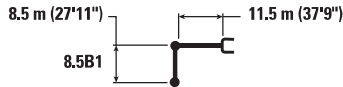
\* Indicates that the load is limited by hydraulic lifting capacity rather than tipping load. The above loads are in compliance with hydraulic excavator lift capacity standard ISO 10567:2007. They do not exceed 87% of hydraulic lifting capacity or 75% of tipping load. Weight of all lifting accessories must be deducted from the above lifting capacities. Lifting capacities are based on the machine standing on a firm, uniform supporting surface. The use of a work tool attachment point to handle/lift objects, could affect the machine lift performance.

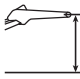

Lift capacity stays with ±5% for all available track shoes.

Always refer to the appropriate Operation and Maintenance Manual for specific product information.

# 352 Long Reach Hydraulic Excavator Specifications

## LRE Boom Lift Capacities – Counterweight: 12.0 mt (26,455 lb) – without Bucket, Heavy Lift: On



	3000 mm/10'0"		4500 m/15'0"		6000 m/20'0"		7500 m/25'0"		9000 m/30'0"				m ft/in	
	kg lb	kg lb	kg lb	kg lb	kg lb	kg lb	kg lb	kg lb	kg lb	kg lb	kg lb	kg lb		
13 500 mm 45'0"												*2900	*2900	14 410
12 000 mm 40'0"												*2850	*2850	15 460
10 500 mm 35'0"												*6,200	*6,200	50'03"
9000 mm 30'0"												*2800	*2800	16 300
7500 mm 25'0"												*6,200	*6,200	53'02"
6000 mm 20'0"												*2850	*2850	16 970
4500 mm 15'0"												*6,250	*6,250	55'05"
3000 mm 10'0"												*2900	*2900	17 490
1500 mm 5'0"												*6,350	*6,350	57'02"
0 mm 0'0"												*3000	*3000	17 860
-1500 mm -5'0"												*6,550	*6,550	58'06"
-3000 mm -10'0"												*3100	*3100	18 100
-4500 mm -15'0"												*6,850	*6,850	59'03"
-6000 mm -20'0"												*3300	*3300	18 210
-7500 mm -25'0"												*7,200	*7,200	59'08"
-9000 mm -30'0"												*3500	3450	18 190
-10500 mm -35'0"												*7,650	7,600	59'08"
0 mm 0'0"	kg lb	*4050 *9,050	*4050 *9,050	*7100 *16,050	*7100 *16,050	*13 200 *30,350	*13 200 *30,350	*13 700 *29,600	12 800 27,550	*11 100 23,950	10 000 21,550	*3750 *8,300	3400 7,500	18 060 59'02"
-1500 mm -5'0"	kg lb	*5400 *12,050	*5400 *12,050	*7700 *17,300	*7700 *17,300	*12 250 *27,850	*12 250 *27,850	*14 000 *30,300	12 050 25,950	11 100 23,950	9400 20,300	4050 8,950	3400 7,500	17 790 58'03"
-3000 mm -10'0"	kg lb	*6750 *15,000	*6750 *15,000	*8750 *19,650	*8750 *19,650	*12 550 *28,450	*12 550 *28,450	13 900 29,900	11 650 25,000	10 700 23,050	9050 19,450	4150 9,150	3450 7,650	17 390 56'11"
-4500 mm -15'0"	kg lb	*8100 *18,100	*8100 *18,100	*10 050 *22,500	*10 050 *22,500	*13 550 *30,650	*13 550 *30,650	13 650 29,400	11 400 24,550	10 500 22,550	8800 18,950	4300 9,500	3600 7,950	16 840 55'01"
-6000 mm -20'0"	kg lb	*9550 *21,300	*9550 *21,300	*11 500 *25,850	*11 500 *25,850	*15 000 *33,900	*15 000 *33,900	*13 050 *28,200	11 350 24,450	10 400 22,350	8700 18,750	4600 10,100	3850 8,450	16 130 52'08"
-7500 mm -25'0"	kg lb			*13 200 *29,650	*13 200 *29,650	*14 650 *31,600	*14 650 *31,600	*12 150 *26,150	11,450 24,650	*10 200 *22,000	8750 18,850	5000 11,050	4200 9,300	15 250 49'08"
-9000 mm -30'0"	kg lb			*15 050 *33,350	*15 050 *33,350	*12 900 *27,650	*12 900 *27,650	*10 850 *23,300	*10 850 *23,300	*9250 *19,750	8900 19,150	*6250 *11,550	4750 10,550	14 140 45'11"
-10500 mm -35'0"	kg lb							*9150 *19,400	*9150 *19,400	*7850 *16,600	*7850 *16,600	*5050 *11,050	*5050 *11,050	12 770 41'03"



ISO 10567:2007



\* Indicates that the load is limited by hydraulic lifting capacity rather than tipping load. The above loads are in compliance with hydraulic excavator lift capacity standard ISO 10567:2007. They do not exceed 87% of hydraulic lifting capacity or 75% of tipping load. Weight of all lifting accessories must be deducted from the above lifting capacities. Lifting capacities are based on the machine standing on a firm, uniform supporting surface. The use of a work tool attachment point to handle/lift objects, could affect the machine lift performance.

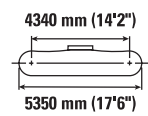
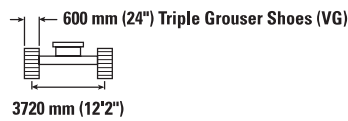
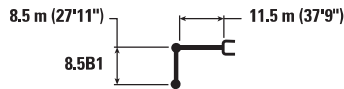
Lift capacity stays with ±5% for all available track shoes.

Always refer to the appropriate Operation and Maintenance Manual for specific product information.

(continued on next page)

# 352 Long Reach Hydraulic Excavator Specifications

## LRE Boom Lift Capacities – Counterweight: 12.0 mt (26,455 lb) – without Bucket, Heavy Lift: On (continued)



		10 500 m/35'0"		12 000 m/40'0"		13 500 m/45'0"		15 000 m/50'0"		16 500 m/55'0"		18 000 m/60'0"		m ft/in		
		kg lb	kg lb	kg lb	kg lb	kg lb	kg lb	kg lb	kg lb	kg lb	kg lb	kg lb	kg lb	kg lb	kg lb	
13.5 m 45.0 ft	kg lb													*2900 *2900	14 410	
12.0 m 40.0 ft	kg lb							*3300 *6,450	*3300 *6,450					*2850 *6,200	*2850 *6,200	15 460 50'03"
10.5 m 35.0 ft	kg lb							*4100 *8,400	*4100 *8,400					*2800 *6,200	*2800 *6,200	16 300 53'02"
9.0 m 30.0 ft	kg lb							*4700 *9,900	*4700 *9,900	*3450 *6,700	*3450 *6,700			*2850 *6,250	*2850 *6,250	16 970 55'05"
7.5 m 25.0 ft	kg lb					*5900 *12,800	*5900 *12,800	*5350 *11,250	*5350 *11,250	*4150 *8,350	*4150 *8,350			*2900 *6,350	*2900 *6,350	17 490 57'02"
6.0 m 20.0 ft	kg lb			*6700 *14,550	*6700 *14,550	*6100 *13,250	*6100 *13,250	*5650 *12,250	*5650 *12,100	*4750 *9,750	4700 9,750			*3000 *6,550	*3000 *6,550	17 860 58'06"
4.5 m 15.0 ft	kg lb	*7950 *17,250	*7950 *17,250	*7050 *15,300	*7050 *15,300	*6350 *13,800	*6350 *13,800	*5800 *12,600	5400 11,600	5250 *11,050	4500 9,600	*3300 *3300		*3100 *6,850	*3100 *6,850	18 100 59'03"
3.0 m 10.0 ft	kg lb	*8450 *18,300	*8450 *18,300	*7400 *16,050	*7400 *16,050	*6600 *14,300	6200 13,300	*6000 *12,850	5150 11,050	5050 *10,850	4350 9,250	*3650 *3650		*3300 *7,200	*3300 *7,200	18 210 59'08"
1.5 m 5.0 ft	kg lb	*8950 *19,300	8600 18,550	*7750 *16,750	7050 15,150	6850 *14,650	5850 12,600	5750 *12,350	4900 *10,550	4900 *10,450	4150 8,900	*3900 *3900	3550	*3500 *7,650	3450 7,600	18 190 59'08"
0 m 0 ft	kg lb	*9300 *20,100	8050 17,350	7800 *16,700	6650 14,300	6500 *14,000	5550 *11,950	5550 *11,850	4700 *10,050	4750 *10,150	4000 8,550	*3900 *3900	3400	*3750 *8,300	3400 7,500	18 060 59'02"
-1.5 m -5.0 ft	kg lb	9000 19,300	7650 16,400	7450 *16,000	6300 *13,600	6250 *13,450	5300 *11,400	5350 *11,450	4500 *9,650	4600 *9,850	3850 *8,250			4050 *8,950	3400 *7,500	17 790 58'03"
-3.0 m -10.0 ft	kg lb	8650 18,600	7300 15,700	7200 *15,450	6050 *13,050	6050 *13,000	5100 *11,000	5200 *11,150	4350 *9,350	4500 *9,650	3750 *8,050			4150 *9,150	3450 *7,650	17 390 56'11"
-4.5 m -15.0 ft	kg lb	8450 18,150	7100 15,300	7000 *15,050	5900 *12,650	5950 *12,750	5000 *10,700	5100 *10,950	4300 *9,150	4450 *9,550	3700 *7,950			4300 *9,500	3600 *7,950	16 840 55'01"
-6.0 m -20.0 ft	kg lb	8350 17,950	7000 15,100	6900 *14,900	5800 *12,500	5850 *12,600	4900 *10,600	5050 *10,900	4250 *9,100					4600 *10,100	3850 *8,450	16 130 52'08"
-7.5 m -25.0 ft	kg lb	8350 17,950	7000 15,100	6900 *14,900	5800 *12,500	5900 *12,650	4950 *10,600	5100 *10,900	4250					5000 *11,050	4200 *9,300	15 250 49'08"
-9.0 m -30.0 ft	kg lb	*7900 *16,850	7100 15,350	*6750 *14,350	5900 *12,750	*5700 *12,000	5050 *10,850							*5250 *11,550	4750 *10,550	14 140 45'11"
-10.5 m -35.0 ft	kg lb	*6700 *14,100	*6700 *14,100	*5600 *11,700	*5600 *11,700									*5050 *11,050	*5050 *11,050	12 770 41'03"



ISO 10567:2007



\* Indicates that the load is limited by hydraulic lifting capacity rather than tipping load. The above loads are in compliance with hydraulic excavator lift capacity standard ISO 10567:2007. They do not exceed 87% of hydraulic lifting capacity or 75% of tipping load. Weight of all lifting accessories must be deducted from the above lifting capacities. Lifting capacities are based on the machine standing on a firm, uniform supporting surface. The use of a work tool attachment point to handle/lift objects, could affect the machine lift performance.

Lift capacity stays with ±5% for all available track shoes.

Always refer to the appropriate Operation and Maintenance Manual for specific product information.

# 352 Long Reach Hydraulic Excavator Specifications

## Typical Pass Match Guide

For maximum production and efficiency, we recommend that loading and hauling machines are matched to achieve optimal performance.

### Configuration:\*

Variable Gauge High Wide undercarriage, LRE boom, LRE 8.5B (27'9") stick, Heavy Duty (HD) 1.00 m<sup>3</sup> (1.31 yd<sup>3</sup>) bucket, 900 mm (35") triple grouser shoes, 12.0 mt (26,455 lb) counterweight.

### Passes Required to Fill Trucks to Rated Capacity

Material Type	Material Density	Cat Articulated Trucks			
		725	730 EJ	730	735
Earth	1600 kg/m <sup>3</sup> (2,700 lb/yd <sup>3</sup> )	15	18	17	20
Limestone	1540 kg/m <sup>3</sup> (2,600 lb/yd <sup>3</sup> )	17	20	20	

\* The indicated pass match reflects the machine configuration, fill factor, and typical material density shown. Changes to machine configurations, fill factors, or material density as well as jobsite-specific factors may influence exact pass match recommendations for your application. Consult your Cat dealer for more information.

# 352 Long Reach Hydraulic Excavator Specifications

## Bucket Specifications and Compatibility – Europe

	Linkage	Width		Capacity		Weight		Fill	%	Variable Gauge High Wide Undercarriage	
		mm	in	m <sup>3</sup>	yd <sup>3</sup>	kg	lb			12.0 mt (26,455 lb) Counterweight	
										LRE Boom 11.5 m (37'9")	
										LRE 8.5 (27'11")	
<b>Pin-On (No Quick Coupler)</b>											
General Duty	B	600	24	0.46	0.61	555	1,223	100		●	
	B	750	30	0.64	0.84	626	1,380	100		●	
	B	1050	42	1.00	1.31	737	1,624	100		●	
Heavy Duty	B	1050	42	1.00	1.31	855	1,885	100		●	
Ditch Cleaning	B	1800	71	0.86	1.12	590	1,301	100		●	
	B	2100	83	1.06	1.39	657	1,447	100		●	
Ditch Cleaning Tilt	B	2000	79	1.23	1.61	1096	2,416	100		⊖	
									Maximum load with pin-on (payload + bucket)	kg	3000
										lb	6,614
<b>With Cat Pin Grabber Coupler</b>											
General Duty	B	600	24	0.46	0.61	555	1,223	100		●	
	B	750	30	0.64	0.84	626	1,380	100		●	
	B	1050	42	1.00	1.31	737	1,624	100		⊙	
Heavy Duty	B	1050	42	1.00	1.31	855	1,885	100		●	
Ditch Cleaning	B	1800	71	0.86	1.12	590	1,301	100		●	
	B	2100	83	1.06	1.39	657	1,447	100		⊙	
Ditch Cleaning Tilt	B	2000	79	1.23	1.61	1096	2,416	100		○	
									Maximum load with coupler (payload + bucket)	kg	2578
										lb	5,684
<b>With CW-40 Quick Coupler</b>											
General Duty	B CW40	900	35	0.81	1.06	664	1,463	100		●	
General Duty – Leveling Edge	B CW40	650	26	0.70	0.92	567	1,250	100		●	
	B CW40	800	31	0.68	0.89	614	1,353	100		●	
	B CW40	1000	39	0.92	1.21	719	1,586	100		●	
Ditch Cleaning	B CW40	2100	83	1.29	1.69	792	1,746	100		⊖	
	B CW40	1800	72	1.50	1.96	827	1,823	100		○	
Ditch Cleaning Tilt	B CW40	2000	79	1.23	1.61	1161	2,560	100		○	
									Maximum load with coupler (payload + bucket)	kg	2750
										lb	6,063
<b>With CW-40s Quick Coupler</b>											
General Duty	B	750	30	0.64	0.84	592	1,450	100		●	
	B	900	36	0.81	1.06	661	1,444	100		●	
Ditch Cleaning	B	2000	78	1.22	1.60	715	1,576	100		⊖	
	B	2200	87	1.36	1.78	769	1,695	100		⊖	
Ditch Cleaning Tilt	B	2000	79	1.23	1.61	1142	2,518	100		○	
									Maximum load with coupler (payload + bucket)	kg	2769
										lb	6,105

The above loads are in compliance with hydraulic excavator standard EN 474-5:2022/AC:2022, they do not exceed 87% of hydraulic lifting capacity or 75% of tipping capacity with front linkage fully extended at ground line with bucket curled. Capacity based on ISO 7451:2007. Bucket weight with long tips.

### Maximum Material Density:

- 2100 kg/m<sup>3</sup> (3,500 lb/yd<sup>3</sup>)
- ⊙ 1800 kg/m<sup>3</sup> (3,000 lb/yd<sup>3</sup>)
- ⊖ 1500 kg/m<sup>3</sup> (2,500 lb/yd<sup>3</sup>)
- 1200 kg/m<sup>3</sup> (2,000 lb/yd<sup>3</sup>)

Caterpillar recommends using appropriate work tools to maximize the value customers receive from our products. Use of work tools, including buckets, which are outside of Caterpillar's recommendations or specifications for weight, dimensions, flows, pressures, etc. may result in less-than-optimal performance, including but not limited to reductions in production, stability, reliability, and component durability. Improper use of a work tool resulting in sweeping, prying, twisting and/or catching of heavy loads will reduce the life of the boom and stick.

# 352 Long Reach Hydraulic Excavator Specifications

## Bucket Specifications and Compatibility – North America

	Linkage	Width		Capacity		Weight		Fill	Variable Gauge High Wide Undercarriage
		mm	in	m <sup>3</sup>	yd <sup>3</sup>	kg	lb		%
									LRE Boom 11.5 m (37'9")
									LRE 8.5 (27'11")
<b>Pin-On (No Quick Coupler)</b>									
General Duty Capacity	B	600	24	0.55	0.72	620	1,366	100	●
	B	750	30	0.75	0.98	717	1,580	100	●
	B	900	36	0.95	1.24	793	1,747	100	●
General Duty Capacity – Wide Tip	B	600	24	0.55	0.72	617	1,360	100	●
	B	750	30	0.75	0.98	715	1,576	100	●
	B	900	36	0.95	1.24	791	1,743	100	●
Heavy Duty	B	600	24	0.46	0.61	647	1,426	100	●
	B	750	30	0.64	0.84	752	1,658	100	●
	B	900	36	0.81	1.06	835	1,841	100	●
	B	1050	42	1.00	1.31	892	1,967	100	●
	B	1200	48	1.19	1.56	985	2,171	100	⊖
	B	1350	54	1.38	1.80	1069	2,357	100	○
Ditch Cleaning	B	1500	60	1.01	1.32	651	1,436	100	●
Ditch Cleaning Tilt	B	1800	72	0.90	1.83	1105	2,436	100	●
	B	2000	79	1.23	1.61	1161	2,560	100	⊖
								kg	3000
								lb	6,614
<b>With Cat Pin Grabber Coupler</b>									
General Duty Capacity	B	600	24	0.55	0.72	620	1,366	100	●
	B	750	30	0.75	0.98	717	1,580	100	●
	B	900	36	0.95	1.24	793	1,747	100	⊙
General Duty Capacity – Wide Tip	B	600	24	0.55	0.72	617	1,360	100	●
	B	750	30	0.75	0.98	715	1,576	100	●
	B	900	36	0.95	1.24	791	1,743	100	⊙
Heavy Duty	B	600	24	0.46	0.61	647	1,426	100	●
	B	750	30	0.64	0.84	752	1,658	100	●
	B	900	36	0.81	1.06	835	1,841	100	●
	B	1050	42	1.00	1.31	892	1,967	100	●
	B	1200	48	1.19	1.56	985	2,171	100	○
	B	1350	54	1.38	1.80	1069	2,357	100	◇
Ditch Cleaning	B	1500	60	1.01	1.32	651	1,436	100	⊙
Ditch Cleaning Tilt	B	1800	72	0.90	1.83	1105	2,436	100	⊖
	B	2000	79	1.23	1.61	1161	2,560	100	○
								kg	2578
								lb	5,684

The above loads are in compliance with hydraulic excavator standard EN 474-5:2022/AC:2022, they do not exceed 87% of hydraulic lifting capacity or 75% of tipping capacity with front linkage fully extended at ground line with bucket curled. Capacity based on ISO 7451:2007.

Bucket weight with long tips.

### Maximum Material Density:

- 2100 kg/m<sup>3</sup> (3,500 lb/yd<sup>3</sup>)
- ⊙ 1800 kg/m<sup>3</sup> (3,000 lb/yd<sup>3</sup>)
- ⊖ 1500 kg/m<sup>3</sup> (2,500 lb/yd<sup>3</sup>)
- 1200 kg/m<sup>3</sup> (2,000 lb/yd<sup>3</sup>)
- ◇ 900 kg/m<sup>3</sup> (1,500 lb/yd<sup>3</sup>)

Caterpillar recommends using appropriate work tools to maximize the value customers receive from our products. Use of work tools, including buckets, which are outside of Caterpillar's recommendations or specifications for weight, dimensions, flows, pressures, etc. may result in less-than-optimal performance, including but not limited to reductions in production, stability, reliability, and component durability. Improper use of a work tool resulting in sweeping, prying, twisting and/or catching of heavy loads will reduce the life of the boom and stick.

# 352 Long Reach Hydraulic Excavator Specifications

## Attachments Offering Guide – North America

Not all Attachments are available in all regions. Consult your Cat dealer for configurations available in your region.

Match  1800 kg/m<sup>3</sup> (3,000 lb/yd<sup>3</sup>)

### PIN-ON ATTACHMENTS

Undercarriage		H-VG
Counterweight		12.0 mt (26,455 lb)
Boom Type		LRE
Stick Length		LRE
Demolition and Sorting Grapples	G318	✓
	G318 WH-800	✓
	G318 WH-1100	✓
Mulchers	HM4015	✓
	HM4815	✓
Orange Peel Grapples	GSH420-500	●
	GSH420-600	●
	GSH420-750	●
	GSH520-500	●
	GSH520-600	●
	GSH520-750	●

### CAT PIN GRABBER COUPLER ATTACHMENTS

Undercarriage		H-VG
Counterweight		12.0 mt (26,455 lb)
Boom Type		LRE
Stick Length		LRE
Demolition and Sorting Grapples	G318	✓
	G318 WH-800	✓
Mulchers	HM4015	✓
	HM4815	✓

# 352 Long Reach Hydraulic Excavator Specifications

## Attachments Offering Guide – Europe

Not all Attachments are available in all regions. Consult your Cat dealer for configurations available in your region.

Match

1800 kg/m<sup>3</sup> (3,000 lb/yd<sup>3</sup>)

1200 kg/m<sup>3</sup> (2,000 lb/yd<sup>3</sup>)

### PIN-ON ATTACHMENTS

Undercarriage		H-VG
Counterweight		12.0 mt (26,455 lb)
Boom Type		LRE
Stick Length		LRE
Demolition and Sorting Grapples	G318	✓
	G318 WH-800	✓
	G318 WH-1100	✓
Orange Peel Grapples	GSH420-500	●
	GSH420-600	●
	GSH420-750	●
	GSH520-500	●
	GSH520-600	●
	GSH520-750	●
	GSV420-400	●
	GSV420-500	●
	GSV420-600	●
	GSV420-750	●
	GSV520-400	●
	GSV520-500	●
	GSV520-600	●
Clamshell Grapples	CTV15-1000	●
	CTV15-1200	○

### CAT PIN GRABBER COUPLER ATTACHMENTS

Undercarriage		H-VG
Counterweight		12.0 mt (26,455 lb)
Boom Type		LRE
Stick Length		LRE
Demolition and Sorting Grapples	G318	✓
	G318 WH-800	✓

### CW-40S DEDICATED COUPLER ATTACHMENTS

Undercarriage		H-VG
Counterweight		12.0 mt (26,455 lb)
Boom Type		LRE
Stick Length		LRE
Demolition and Sorting Grapples	G318	✓
	G318 WH-800	✓
	G318 WH-1100	✓

### CW-40 DEDICATED COUPLER ATTACHMENTS

Undercarriage		H-VG
Counterweight		12.0 mt (26,455 lb)
Boom Type		LRE
Stick Length		LRE
Demolition and Sorting Grapples	G318	✓
	G318 Fixed Top	✓
	G318 WH-800	✓
	G318 WH-1100	✓

# 352 Long Reach Standard and Optional Equipment

## Standard and Optional Equipment

Standard and optional equipment may vary. Consult your Cat® dealer for details.

	Standard	Optional		Standard	Optional
<b>BOOMS, STICKS AND LINKAGES</b>			<b>ELECTRICAL SYSTEM</b>		
11.5 m (37'9") LRE boom	✓		Maintenance-free 1,000 CCA batteries	✓	
8.5 m (27'11") LRE stick	✓		Centralized electrical disconnect switch	✓	
Bucket linkage, LRE B1 family with lifting eye, Cat Grade	✓		LED chassis light	✓	
<b>CAT TECHNOLOGY</b>			1,800 lumen LED premium surround lights		✓
Cat Equipment Management:			<b>ENGINE</b>		
– VisionLink™	✓ <sup>2</sup>		Cold start block heater		✓
– Remote Flash	✓		Three selectable modes: Power, Smart, Eco	✓	
– Remote Troubleshoot	✓		Automatic engine speed control	✓	
– Work tool recognition and tracking (PL161)	✓		Up to 4500 m (14,760 ft) altitude capability	✓	
– Operator Coaching		✓ <sup>3</sup>	52° C (126° F) high-ambient cooling capacity	✓	
Cat Grade:			Hydraulic reversing fan	✓ <sup>1</sup>	✓
– Cat Grade with 2D	✓		–18° C (0° F) cold start capability	✓	
– Cat Grade with 2D with Attachment Ready Option (ARO)		✓	–50° C (–58° F) cold weather coolant		✓
– Laser catcher		✓	Double element air filter with integrated pre-cleaner	✓	
– Cat Grade with 3D (single or dual Global Navigation Satellite System [GNSS])		✓	<b>HYDRAULIC SYSTEM</b>		
– Compatible with 3D grade systems from Trimble, Topcon, and Leica	✓		SmartBoom™ – Europe only		✓
– Cat Grade 3D Ready		✓	Boom and stick regeneration circuits	✓	
Cat Payload:			Electronic main control valve	✓	
– On-the-go weighing	✓		Automatic hydraulic oil warmup	✓	
– Semiautomatic calibration	✓		Reverse swing damping valve	✓	
– Payload/cycle information	✓		Automatic swing parking brake	✓	
– VisionLink back office reporting		✓ <sup>3</sup>	High performance hydraulic return filters	✓	
Cat Advanced Payload:			Two speed travel modes	✓	
– Daily totals		✓	Bio hydraulic oil capability		✓
– Custom lists		✓	Hydraulic efficiency monitoring		✓
– Smart weight target		✓	Combined two-way auxiliary circuit		✓
– E-ticket Integration		✓ <sup>3</sup>	Medium pressure auxiliary circuit		✓
			Cooling circuit		✓
			Quick coupler circuit for Cat Pin Grabber and CW Dedicated		✓

<sup>1</sup>North America standard; Europe optional

<sup>2</sup>Provides core telematics data to manage health, maintenance insights, and condition monitoring. Other plans available for more comprehensive data reporting. Consult your Cat dealer for details.

<sup>3</sup>VisionLink subscription required. Consult your Cat dealer for details.

(continued on next page)

## 352 Long Reach Standard and Optional Equipment

### Standard and Optional Equipment (continued)

Standard and optional equipment may vary. Consult your Cat dealer for details.

	Standard	Optional		Standard	Optional
<b>SAFETY AND SECURITY</b>			<b>UNDERCARRIAGE AND STRUCTURES</b>		
Cat Command (remote control)		✓	Variable Gauge High Wide undercarriage	✓	
2D E-Fence:	✓		Grease lubricated track	✓	
– E-ceiling			Towing eye on baseframe	✓	
– E-floor			Segmented three-piece track guiding guards		✓
– E-swing			Full-length track guiding guards		✓
– E-wall			HD bottom guard	✓	
– E-cab avoidance			HD travel motor guard	✓	
Auto hammer stop	✓		12.0 mt (26,455 lb) counterweight	✓	
Caterpillar One Key security system	✓		900 mm (35") triple grouser track shoes	✓ <sup>8</sup>	
Lockable external tool/storage box	✓		750 mm (30") triple grouser track shoes		✓ <sup>7</sup>
Lockable door, fuel, and hydraulic tank locks	✓		600 mm (24") triple grouser track shoes		✓ <sup>7</sup>
Lockable fuel drain compartment	✓		600 mm (24") double grouser track shoes		✓ <sup>7</sup>
Service platform with anti-skid plates and recessed bolts	✓				
Lockable disconnect switch	✓				
Right Hand (RH) handrail and handhold	✓				
Standard visibility mirror package	✓				
Signaling/warning horn	✓				
Travel alarm	✓ <sup>5</sup>				
Swing alarm		✓			
Ground-level secondary engine shutoff switch	✓				
Boom lowering check valve	✓ <sup>6</sup>				
Stick lowering check valve	✓ <sup>6</sup>				
Rear and right-hand-sideview cameras	✓				
Inspection lighting		✓			
360° visibility		✓			
<b>SERVICE AND MAINTENANCE</b>					
Integrated vehicle health management system	✓				
Grouped location for engine oil and fuel filters	✓				
S·O·S <sup>SM</sup> ports	✓				
QuickEvac <sup>TM</sup> maintenance ready		✓			
Electric refueling pump with auto shutoff		✓ <sup>7</sup>			

<sup>5</sup>North America mandatory; Europe optional

<sup>6</sup>Europe standard; North America optional

<sup>7</sup>Europe only

<sup>8</sup>Europe optional

## Dealer Installed Kits and Attachments

Attachments may vary. Consult your Cat dealer for details.

---

- Lower radial wiper
- Joystick with horizontal sliders
- Left Hand (LH)/RH electrical pedal for tool control
- Dual exit rear window kit\*
- Front windshield laminated glass
- Bluetooth® key fob
- Operator Protective Guards
- Vandalism guard
- Full mesh net guard
- Lower mesh net guard
- Rain protector for front windshield and cab light cover
- Submarine kit
- Cat Detect – People Detection
- Cat Command – Remote control kit

\*Available in North America only.

# 352 Long Reach Cab Options

## Cab Options

	Deluxe	Premium*
Sound suppressed cab	●	●
Operator Protective Guards	○	○
Two-piece front windshield 70/30, tempered	●	○
One-piece front windshield, tempered	X	○
High-resolution 254 mm (10") LCD touchscreen monitor	●	●
Additional high-resolution LCD touchscreen monitor for Cat Grade Advanced 2D and 3D	○	○
Automatic bi-level air conditioner	●	●
Jog dial and shortcut keys for monitor control	●	●
Keyless push-to-start engine control	●	●
Height-adjustable console	●	●
Heated seat with air-adjustable suspension	●	X
Heated and cooled seat with automatic adjustable suspension	X	●
Tilt-up left-side console	●	●
Cat Stick Steer	●	●
51 mm (2") orange seat belt	●	●
Bluetooth® integrated radio (including USB, auxiliary port and microphone)	●	●
2 × 12V DC outlets	●	●
Document storage	●	●
Rear head storage net and lunchbox storage net	●	●
Cup and bottle holders	●	●
Upper radial wiper 70/30 with washer	●	X
Parallel wiper with 70/30 with washer	X	○
Parallel wiper one-piece with washer	X	○
Polycarbonate skylight hatch, openable windshield	●	○
Fixed glass hatch, one-piece windshield	X	○
LED cab lights, 1,800 lumens	●	●
LED dome light	●	●
Roller front sunscreen	●	●
Roller rear sunscreen	○	●
Rear window emergency exit	●	●
Washable floor mat	●	●
Beacon ready	●	●
Auxiliary relay	●	●

● Standard

○ Optional

X Not available

\* Available in Europe only

# 352 Long Reach Environmental Declaration

The following information applies to the machine at the time of final manufacture as configured for sale in the regions covered in this document. The content of this declaration is valid as of the date issued; however, content related to machine features and specifications are subject to change without notice. For additional information, please see the machine's Operation and Maintenance Manual.

For more information on sustainability in action and our progress, please visit <https://www.caterpillar.com/en/company/sustainability>.

## Engine

- The Cat® C13B engine meets U.S. EPA Tier 4 Final, EU Stage V, and Japan 2014 emission standards.
- Cat diesel engines are required to use ULSD (ultra-low sulfur diesel fuel with 15 ppm of sulfur or less) and are compatible\* with ULSD blended with the following lower-carbon intensity fuels\*\* up to:
  - ✓ 20% biodiesel FAME (fatty acid methyl ester) \*\*\*
  - ✓ 100% renewable diesel, HVO (hydrotreated vegetable oil) and GTL (gas-to-liquid) fuelsRefer to guidelines for successful application. Please consult your Cat dealer or “Caterpillar Machine Fluids Recommendations” (SEBU6250) for details.

\* While Cat engines are compatible with these alternative fuels, some regions may not allow their use.

\*\* Tailpipe greenhouse gas emissions from lower-carbon intensity fuels are essentially the same as traditional fuels.

\*\*\* Engines with no aftertreatment devices are compatible with higher blends, up to 100% biodiesel (for use of blends higher than 20% biodiesel, consult your Cat dealer).

## Air Conditioning System

- The air conditioning system on this machine contains the fluorinated greenhouse gas refrigerant R134a or R1234yf. See the label or instruction manual for identification of the gas.
  - If equipped with R134a (Global Warming Potential = 1430), the system contains 1.0 kg (2.2 lb) of refrigerant which has a CO<sub>2</sub> equivalent of 1.430 metric tonnes (1.576 tons).
  - If equipped with R1234yf (Global Warming Potential = 0.501), the system contains 0.85 kg (1.87 lb) of refrigerant which has a CO<sub>2</sub> equivalent of 0.001 metric tonnes (0.001 tons).

## Paint

- Based on best available knowledge, the maximum allowable concentration, measured in parts per million (PPM), of the following heavy metals in paint are:
  - Barium < 0.01%
  - Cadmium < 0.01%
  - Chromium < 0.01%
  - Lead < 0.01%

## Sound Performance

ISO 6395:2008 (external) – 108 dB(A)

ISO 6396:2008 (inside cab) – 72 dB(A)

- External Sound – The labeled spectator sound power level represents the Guaranteed Value per 2000/14/EC amended by 2005/88/EC, when properly equipped, and is measured according to the test procedures and conditions specified in ISO 6395:2008. The measurements were conducted at 70% of the maximum engine cooling fan speed.
- Internal Sound – The operator sound pressure level is measured according to the test procedures and conditions specified in ISO 6396:2008 for a cab offered by Caterpillar, when properly installed and maintained and tested with the door and windows closed. The measurements were conducted at 70% of the maximum engine cooling fan speed.
- Hearing protection may be needed when operating with an open operator station and cab (when not properly maintained for doors/windows open) for extended periods or in noisy environment(s).

## Oils and Fluids

- Caterpillar factory fills with ethylene glycol coolants. Cat Diesel Engine Antifreeze/Coolant (DEAC) and Cat Extended Life Coolant (ELC) can be recycled. Consult your Cat dealer for more information.
- Cat Bio HYDO™ Advanced is an EU Ecolabel approved biodegradable hydraulic oil.
- Additional fluids are likely to be present, please consult the Operations and Maintenance Manual or the Application and Installation guide for complete fluid recommendations and maintenance intervals.

## Features and Technology

- The following features and technology may contribute to fuel savings and/or carbon reduction. Features may vary. Consult your Cat dealer for details.
  - Smart mode matches machine power to digging requirements automatically
  - Eco mode helps minimize fuel consumption for light applications
  - Extended service intervals help decrease maintenance costs
  - Hydraulic reversing fan cools engine on demand to help reduce fuel consumption
  - Increase operating efficiency with standard Cat technologies that help lower operator fatigue and operating costs.

For more complete information on Cat products, dealer services, and industry solutions, visit us on the web at [www.cat.com](http://www.cat.com)

© 2025 Caterpillar  
All rights reserved

Materials and specifications are subject to change without notice. Featured machines in photos may include additional equipment. See your Cat dealer for available options.

CAT, CATERPILLAR, LET'S DO THE WORK, VisionLink, their respective logos, "Caterpillar Corporate Yellow," the "Power Edge" and Cat "Modern Hex" trade dress as well as corporate and product identity used herein, are trademarks of Caterpillar and may not be used without permission.

AEXQ4050-01 (12-2025)  
Replaces: AEXQ4050-00  
Build Number: 08D  
(Europe, N Am)

