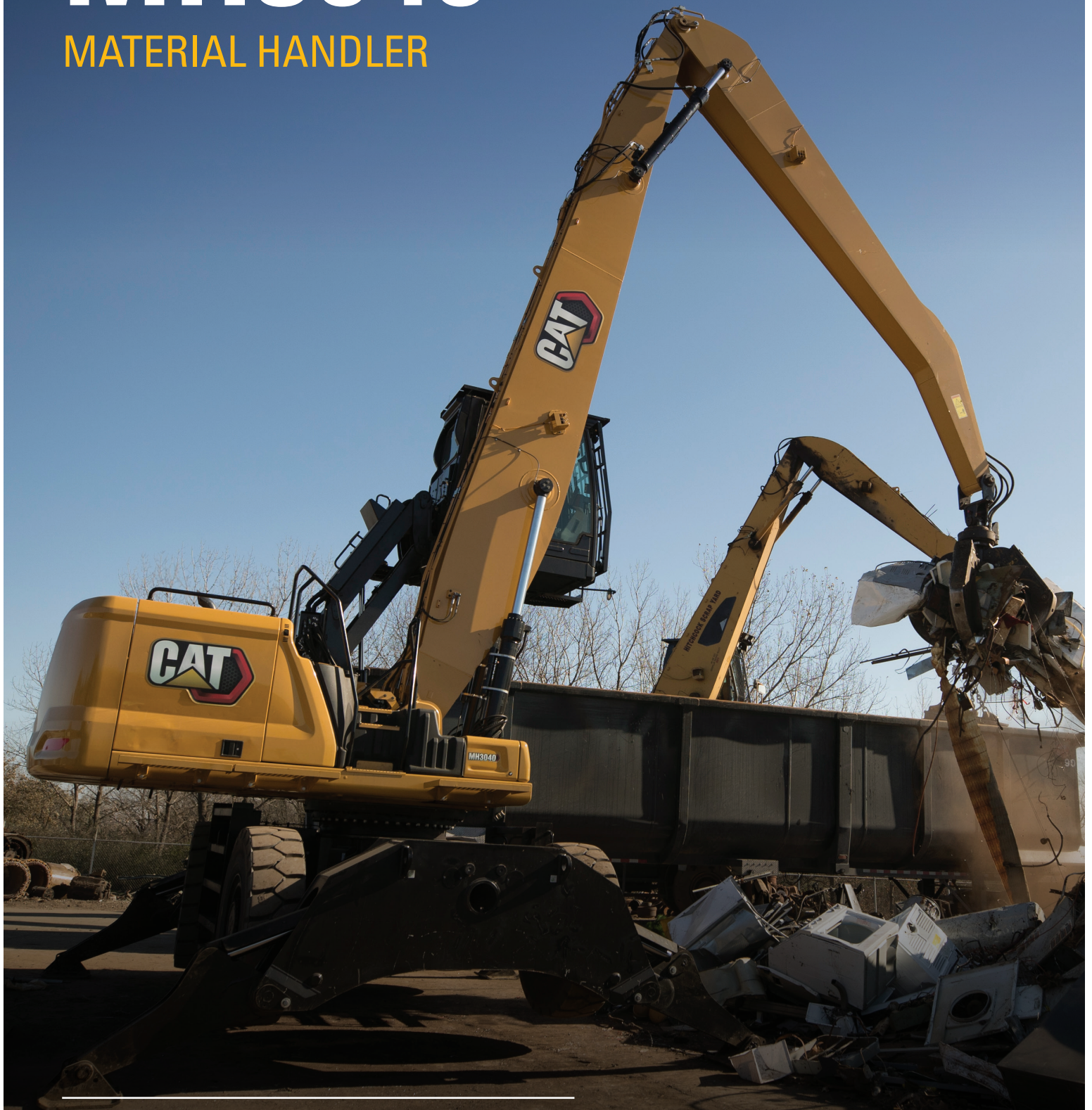


# MH3040

MATERIAL HANDLER



---

<b>Engine Power (ISO 14396:2002)</b>	152 kW (204 hp)
<b>Operating Weight</b>	38 529 kg (84,940 lb)

Engine meets U.S. EPA Tier 4 Final and EU Stage V emission standards.





# THE NEW CAT<sup>®</sup> MH3040

RELIABLE. COMFORTABLE. PRODUCTIVE.

The Cat<sup>®</sup> MH3040 Material Handler builds upon the legacy of the M325D L MH to provide the power and reliability you need for your toughest material handling applications. A new cab, reduced fuel consumption, and lower maintenance costs combine with proven components to bring you the next generation of Cat material handlers.



## NEXT GENERATION MATERIAL HANDLERS

Your business is more competitive than ever. Ready to help make your business stronger, Cat next generation material handlers give you new ways to get the most work done reliably and efficiently.

- + MORE WAYS TO BOOST PERFORMANCE
- + MORE VERSATILE SOLUTIONS FOR YOUR JOBSITE
- + MORE FUEL SAVING FEATURES



---

## PROVEN RELIABILITY<sup>1</sup>

High-stress areas are reinforced and built to last. The MH3040 will withstand the toughest applications.

---

## LOWER FUEL CONSUMPTION BY UP TO 25%<sup>1</sup>

A more efficient engine, along with eco, smart and power modes, helps you match performance to the job and optimize fuel efficiency.

---

## LOWER MAINTENANCE COSTS BY UP TO 20%<sup>1</sup>

Fewer maintenance points paired with extended and more synchronized maintenance intervals increases uptime and reduces costs.

<sup>1</sup> Compared to the M325D L MH

## UP TO 20% LESS MAINTENANCE COSTS



---

**LESS MAINTENANCE,  
MORE PROFITABILITY**

---

NOTE: COMPARISON IS BASED ON THE MH3040 vs M325D L MH.



# BUILT TO LAST

STRONG. PRODUCTIVE. EFFICIENT



## BUILDING ON THE LEGACY

The MH3040 utilizes components from the legacy M325D L MH and the Cat next generation hydraulic excavators. The MH3040 provides the strength and longevity you need for your tough material handling applications.

## FUEL SAVING PERFORMANCE

Use up to 25% less fuel than the M325D L MH. The MH3040 features a high-efficiency, electrically driven cooling fan that runs only when you need it. An advanced hydraulic system provides the optimum balance of power and efficiency while providing the control you need.

## STRENGTH WHERE IT MATTERS

Count on your machine to withstand wear throughout the years. Boom, sticks, and other high-stress areas are reinforced with thick multi-plate fabrications, castings, and forgings to ensure quality and reliability. The upper frame uses specially designed mountings to support the heavy-duty cab and the lower frame is reinforced to enhance component durability.

## NEW SMART MODE

The new smart mode, one of three power mode settings, automatically adjusts engine and hydraulic power for the highest fuel efficiency. Operators can set and store their power mode preference using operator ID. Owners can lock in the mode they want their operators to use to help manage fuel consumption.



LOWER MAINTENANCE COSTS  
**UP TO 20%**



---

## DO MORE. PAY LESS.

With extended and more synchronized maintenance intervals, you get more done at a low cost. Consolidated filter locations make service faster.

---

## INFORMATION AT YOUR FINGERTIPS

View operating information such as fuel and oil levels as well as critical service alerts on the in-cab touchscreen monitor. Your machine's filter life and maintenance intervals are also trackable on the in-cab monitor.

---

## NEW LONGER LASTING FILTERS

The new hydraulic oil filter provides improved filtration performance, anti-drain valves to keep oil clean when the filter is replaced, and a 3,000-hour replacement interval – 50% longer than previous filter designs.



# CAB TAKES

## THE HARD OUT OF WORK

Comfort and movement efficiency help keep operators productive and alert all shift long. A tip-up left console lets you get in and out of the cab easily, and the standard heated and ventilated seat is wide and adjustable for operators of virtually any size. Controls are easy to reach, allowing you to operate comfortably with minimal twists and turns.

### TOUCHSCREEN MONITORS

Most machine settings can be controlled through the high-resolution 254 mm/10-inch touchscreen monitor. It offers 42 languages and is easy to read from the seat.

### EASY ACCESS, CONNECTIVITY, AND STORAGE

#### EASY ACCESS, CONNECTIVITY, AND STORAGE

Several built-in convenience features make work more comfortable.

- + Ergonomic control layout
- + Bluetooth integrated radio
- + USB ports for charging and phone connectivity
- + 12V DC outlets and AUX port
- + Storage in rear, overhead, and console compartments
- + Cup and bottle holders

The cab is sound suppressed and sealed. The fixed, one piece, laminated P5A glass windshield and an optional falling object guarding system (FOGS) protect you from debris coming toward the cab.



### KEYLESS PUSH TO START

The MH3040 uses a keyless push-button engine start. This adds security for the machine by using operator ID codes to limit and track machine access. Codes can be entered manually, via an optional Bluetooth® key fob.

### JOYSTICK STEERING

Joystick steering eliminates the steering column giving you more room to enter and exit the cab. Operate your machine without leaning forward, reducing the strain on your back.

Joystick function can be customized through the monitor. Joystick pattern as well as response can be set to match operator preferences. All preferences are saved with the operator ID and restored at log in. For additional modifications to the function speed (gain) setting and balance refinement, contact your local Cat dealer.

Make operating easier with the touch of a joystick button. Additional auxiliary relays allow you to power on or turn off a CB radio, beacon light, and even a dust suppression watering system without taking your hands off the joysticks.

### NEW CAB DESIGN

#### Helps Keep You Safe

Enlarged windows and improved machine layout increase visibility from the seat of the cab and an enlarged rear window can be used as an emergency exit. Standard rear-view and right-side-view cameras always keep you aware of your surroundings. Powerful, long lasting LED lights consume minimal power, keeping you safe while working in the dark.



# DO MORE

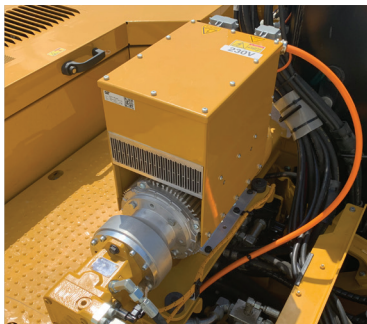
VERSATILITY KEEPS YOU PRODUCTIVE AND PROFITABLE

Cat material handlers are designed and built for your demanding industry. These aggressive machines deliver fast, mobile, and efficient performance.



## POWER WHEN YOU NEED IT

Equip your MH3040 with an optional 20 kW generator for magnet operation.



## CUSTOMIZABLE DESIGN

Match your machine to the job. Multiple configurations allow you to customize your machine for millyard, scrap, and log loading applications.

## INCREASE YOUR PRODUCTIVITY AND PROFIT WITH CAT ATTACHMENTS

Easily expand the performance of your machine by using Cat attachments. Each Cat attachment is designed to fit the weight and horsepower of Cat material handlers for improved performance, safety, and stability.



FORESTRY GRAPPLES



ORANGE PEEL GRAPPLES





LOOK OUT FOR YOUR PEOPLE AND EQUIPMENT

# SAFETY FEATURES

## SEE THE JOB AROUND YOU

Joystick steering eliminates the steering column, improving front visibility. The large cab windows, smaller cab pillars, and flat engine hood design provide outstanding visibility to your jobsite from the seat of the cab. Rear-view and right-side-view cameras are standard for additional visibility. Standard 1800-lumen, LED lights on the boom and stick illuminate your surroundings for a safer work environment.

## SECURE START

Use your PIN code on the monitor, the optional Bluetooth key fob, or your smartphone to enable the push-button starting feature.

## UPPER PLATFORM ACCESS

New right and left service platform design provides easy, safe, and quick access to the upper service area. The service platform steps use anti-skid punch plate to prevent slipping. Handles and railings help you maintain three points of contact.



# CAT EQUIPMENT MANAGEMENT TECHNOLOGY TAKES THE GUESSWORK OUT OF MANAGING YOUR EQUIPMENT

---

Cat equipment management telematics technology helps take the complexity out of managing your jobsites by gathering data generated by your equipment, materials, and people and serving it up to you in customizable formats.



## **PRODUCT LINK™**

Product Link™ collects data automatically and accurately from your assets – any type and any brand. Information such as location, hours, fuel usage, productivity, idle time, maintenance alerts, diagnostic codes, and machine health can be viewed online through web and mobile applications.



## **VISIONLINK®**

Access information anytime, anywhere with VisionLink®. Use it to make informed decisions that boost productivity, lower costs, simplify maintenance, and improve safety and security on your jobsite. With different subscription level options, your Cat dealer can help you configure exactly what you need to connect your fleet and manage your business without paying for extras you don't want. Subscriptions are available with cellular or satellite reporting (or both).



# TECHNICAL SPECIFICATIONS

See [cat.com](http://cat.com) for complete specifications for all available configurations.

ENGINE		
Engine Model	Cat® C7.1	
Engine Power – ISO 14396:2002	152 kW	204 hp
Net Power – ISO 9249:2007	151 kW	202 hp
Bore	105 mm	4 in
Stroke	135 mm	5 in
Displacement	7.01 L	428 in³

- Meets U.S. EPA Tier 4 Final and EU Stage V emission standards.
- Recommended for use up to 4500 m (14,764 ft) altitude with engine power derate above 3000 m (9,842 ft).
- Net power available at the flywheel when the engine is equipped with fan, air cleaner, exhaust gas aftertreatment, and alternator with engine speed at 1,800 rpm.

TRANSMISSION		
Maximum Travel Speed	18 km/h	11.2 mph
Drawbar Pull	154 kN	34,621 lbf
Maximum Gradeability	43.8%	

HYDRAULIC SYSTEM		
Main System – Maximum Flow	560 L/min (280 x 2 pumps)	148 gal/min (74 x 2 pumps)
Maximum Pressure – Implements	35 000 kPa	5,076 psi
Maximum Pressure – Travel	35 000 kPa	5,076 psi
Maximum Pressure – Swing	28 400 kPa	4,061 psi
Medium Pressure – Maximum Flow	60 L/min	16 gal/min
Medium Pressure – Max Pressure	23 000 kPa	3,336 psi

SWING MECHANISM		
Swing Speed	11.5 rpm	
Maximum Swing Torque	82 kN-m	60,628 lbf-ft

MACHINE WEIGHTS		
Maximum Operating Weight	38 529 kg	84,940 lb
• Operating weight includes full fuel tank, operator, grapple 2000 kg (4,410 lb) and single tires. Weight varies depending on configuration.		

SERVICE REFILL CAPACITIES		
Fuel Tank Capacity	474 L	125.2 gal
Cooling System	25 L	6.6 gal
Engine Oil	25 L	6.6 gal
Swing Drive	10 L	2.6 gal
Swing Drive (each)	5.5 L	1.5 gal
Rear Axle Housing (differential)	19 L	5 gal
Front Steering Axle (differential)	24 L	6.3 gal
Final Drive	6 L	1.6 gal
Powershift Transmission	2.9 L	0.8 gal
Hydraulic System (including tank)	329 L	86.9 gal
Hydraulic Tanks	147 L	38.9 gal
Diesel Exhaust Fluid (DEF) Tank	41 L	10.8 gal

DIMENSIONS		
Boom	MH Boom 9.3 m (30'6")	
Stick	7.1 m (23'3") and 5.7 m (18'7")	
Shipping Height with FOGS	3805 mm	12'6"
Shipping Length	12 800 mm	42'0"
Machine Length	6330 mm	20'9"
Tail Swing Radius	3130 mm	10'3"
Counterweight Clearance	1741 mm	5'9"
Cab Height - Lowered	3660 mm	12'0"
Cab Height - Lowered with FOGS	3805 mm	12'6"
Cab Height - Raised	6255 mm	20'6"
Cab Height - Raised with FOGS	6400 mm	21'0"
Wheel Base	3210 mm	10'6"
Shipping Width - Outside tires*	3000 mm	9'10"
Ground Clearance (frame)	265 mm	0'10"
Undercarriage Length	6425 mm	21'1"
Upperframe Width	2957 mm	9'8"

\*With solid tires. For pneumatic tires add 180 mm (0'7").

WORKING RANGES AND FORCES				
Boom	MH Boom 9.3 m (30'6")			
Stick	7.1 m (23'3")	5.7 m (18'7")		
Maximum Height	17 510 mm	57'5"	16 673 mm	54'8"
Maximum Dump Height	5445 mm	17'10"	6893 mm	22'7"
Maximum Reach	15 490 mm	50'10"	14 390 mm	47'3"
Maximum Depth	5265 mm	17'3"	3353 mm	11'0"
Maximum Reach	15 490 mm	50'10"	14 390 mm	47'3"

# STANDARD & OPTIONAL EQUIPMENT

Standard and optional equipment may vary. Consult your Cat® dealer for details.

BOOMS AND STICKS	STANDARD	OPTIONAL
9.3 m (30'6") Material handler boom		•
7.1 m (23'3") Industrial stick		•
5.7 m (18'7") Industrial stick		•
Barge boom 9.9 m (32' 6")		•
Log loader boom		• <sup>3</sup>
Log loader over-under front		• <sup>3</sup>
CAB	STANDARD	OPTIONAL
Advanced sound suppressed TOPS cab with rubber mount	•	
High-resolution 254 mm (10") LCD touch screen monitor	•	
Automatic bi-level air conditioner	•	
Jog dial and shortcut keys for monitor control	•	
Keyless push-to-start engine control	•	
Auxiliary relay		•
Tilt-up left-side console	•	
Air suspension premium seat with headrest, heater, and ventilator	•	
Fixed one-piece laminated windshield (P5A glass)	• <sup>1</sup>	
Two-piece, high impact resistant laminated windshield (P8B)		• <sup>2</sup>
Dome and lower LED interior lights	•	
CAT TECHNOLOGIES	STANDARD	OPTIONAL
Cat Product Link™	•	
Remote Services capability	•	
ELECTRICAL SYSTEM	STANDARD	OPTIONAL
Generator, 20 kW with wiring to stick nose		•
Maintenance-free battery	•	
LED chassis light, left-side/right-side boom lights, cab lights	•	
Centralized electrical disconnect switch	•	
Programmable time delay LED working lights after engine shutdown	•	
Rotating beacon		•
ENGINE	STANDARD	OPTIONAL
Three selectable modes: power, smart, eco	•	
4500 m (14,760 ft) altitude capability with engine power derate above 3000 m (9,840 ft)	•	
43°C (109°F) high-ambient cooling capacity with derate	•	
-20°C (-4°F) cold start capability	•	
Cold start, block heater		•
Cold start, ether start	• <sup>4</sup>	
Reversible electric cooling fans	•	

HYDRAULIC SYSTEM	STANDARD	OPTIONAL
Electric main control valve	•	
Boom and stick regeneration circuits	•	
Automatic hydraulic oil warm up	•	
Boom and stick lowering control check valves		•
Tandem type electronic main pump	•	
Element type main hydraulic filter	•	
Fine swing control function	• <sup>4</sup>	
Heavy lift mode	•	
SmartBoom™		•
SAFETY AND SECURITY	STANDARD	OPTIONAL
One key security system	•	
Door and cap locks	•	
Travel/swing lock	•	
Signaling/warning horn	•	
Travel alarm	•	
Secondary, ground level engine shutoff switch	•	
Openable rear window as emergency exit	•	
Bolt-on FOGS		•
Rear-view camera	•	
Right-side-view camera	•	
Right-side front-view mirror	•	
UNDERCARRIAGE AND STRUCTURES	STANDARD	OPTIONAL
7700 kg (16,975 lb) counterweight	•	
16.00-25 single solid rubber tires		•
23.5-R25 XHA2 (Michelin) tires		•
All wheel drive	•	
Automatic brake/axle lock	•	
Creeper speed	•	
Electronic swing and travel lock	•	
Heavy-duty axles, advanced disc brake system, and travel motor with adjustable braking force	•	
Lockable and oscillating axle with remote greasing point	•	
Two speed hydrostatic transmission	•	
Tie down points on base frame (ISO 15818 compliant)	•	

<sup>1</sup>Optional for Europe

<sup>2</sup>Europe only

<sup>3</sup>North America only

<sup>4</sup>North America and Aus-NZ only

**Not all features are available in all regions. Please check with your local Cat dealer for specific offering availability in your area.**

For additional information, refer to the technical specifications brochures available at [www.cat.com](http://www.cat.com) or your Cat dealer.



For more complete information on Cat products, dealer services and industry solutions, visit us on the web at [www.cat.com](http://www.cat.com).

VisionLink is a trademark of Caterpillar Inc., registered in the United States and in other countries.

Materials and specifications are subject to change without notice. Featured machines in photos may include additional equipment. See your Cat dealer for available options.

© 2022 Caterpillar. All Rights Reserved. CAT, CATERPILLAR, LET'S DO THE WORK, their respective logos, Product Link, SmartBoom, "Caterpillar Corporate Yellow", the "Power Edge" and Cat "Modern Hex" trade dress as well as corporate and product identity used herein, are trademarks of Caterpillar and may not be used without permission.

[www.cat.com](http://www.cat.com) [www.caterpillar.com](http://www.caterpillar.com)

AEXQ2854-03  
Replaces AEXQ2854-02  
Build Number: 07C  
(Aus-NZ, Eur, N Am)

