



# M314

## Wheeled Excavator

# Technical Specifications

Configurations and features may vary by region. Please consult your Cat® dealer for availability in your area.

## Table of Contents

<b>Specifications</b> .....	<b>2</b>
Engine .....	2
Transmission .....	2
Service Refill Capacities .....	2
Swing Mechanism .....	2
Undercarriage .....	2
Operating Weights .....	2
Major Component Weights .....	3
Hydraulic System .....	3
Tires .....	3
Dozer Blade .....	4
Emissions and Safety .....	4
Standards .....	4
Sound Performance .....	4
Air Conditioning System .....	4
Dimensions .....	5
Undercarriage Dimensions .....	6
Working Ranges .....	7
Bucket Specifications and Compatibility:	
North America .....	8
Europe .....	9
Australia and New Zealand .....	12
South Korea .....	13
Attachments Offering Guide:	
North America .....	14
Europe .....	16
Australia and New Zealand .....	21
South Korea .....	22
Lift Capacities:	
Variable Adjustable Boom (5028 mm), 2200 mm Stick .....	23
Variable Adjustable Boom (16'6"), 7'3" Stick .....	24
Variable Adjustable Boom (5028 mm), 2500 mm Stick .....	25
Variable Adjustable Boom (16'6"), 8'2" Stick .....	26
Variable Adjustable Boom (5028 mm), 2900 mm Industrial Stick .....	27
Variable Adjustable Boom (16'6"), 9'6" Industrial Stick .....	28
<b>Standard and Optional Equipment</b> .....	<b>29</b>
<b>Dealer Installed Kits and Attachments</b> .....	<b>31</b>
<b>Cab Options</b> .....	<b>32</b>

# M314 Wheeled Excavator Specifications

## Engine

Engine Model	Cat® C4.4	
Maximum Gross Power		
ISO 14396	110 kW	148 hp
ISO 14396 (metric)	150 hp (PS)	
Maximum Net Power		
ISO 9249	105 kW	141 hp
ISO 9249 (metric)	143 hp (PS)	
Bore	105 mm	4.1 in
Stroke	127 mm	5 in
Displacement	4.4 L	268.5 in <sup>3</sup>
Maximum Torque at 1,400 rpm	560 N·m	413 lbf-ft
Number of Cylinders	4	

- Meets U.S. EPA Tier 4 Final, EU Stage V, and Korea Tier 4 Final emission standards.
- Net power advertised is the power available at the flywheel when engine is equipped with fan, air cleaner, CEM exhaust gas aftertreatment, alternator, and cooling fan running at intermediate speed.
- Recommended for use up to 3000 m (9,843 ft) altitude with engine power derate above 3000 m (9,843 ft).
- Rated speed 2,000 rpm.

## Transmission

Forward/Reverse		
1st Gear	9 km/h	5.6 mph
2nd Gear	37 km/h	23 mph
Creeper Speed		
1st Gear	5 km/h	3.1 mph
2nd Gear	15 km/h	9.3 mph
Drawbar Pull	73 kN	16,411 lbf
Maximum Gradeability (15 000 kg/33,070 lb)	52.5%	

## Service Refill Capacities

Fuel Tank (total capacity)	295 L	77.9 gal
Diesel Exhaust Fluid Tank	20 L	5.3 gal
Cooling System	24 L	6.3 gal
Engine Oil	11 L	2.9 gal
Hydraulic Tank	90 L	23.8 gal
Hydraulic System (including tank)	220 L	58.1 gal
Rear Axle Housing (differential)	11.2 L	3 gal
Front Steering Axle (differential)	9 L	2.4 gal
Final Drive (each)	2.4 L	0.6 gal
Powershift Transmission	2.5 L	0.7 gal

## Swing Mechanism

Maximum Swing Speed	9.1 rpm	
Maximum Swing Torque	39.0 kN·m	28,860 lbf-ft

## Undercarriage

Ground Clearance	335 mm	1'1"
Maximum Steering Angle	35°	
Oscillation Axle Angle	8.5 ±°	
Minimum Turning Radius		
Outside of Tire	6250 mm	20'6"
Outside of Tire (plastic fender)	7450 mm	24'5"
End of VA Boom	7000 mm	23'0"

## Operating Weights\*

Minimum	15 000 kg	33,069 lb
Maximum	18 000 kg	39,683 lb
Typical Configurations		
Variable Adjustable Boom**		
Rear Blade Only	15 230 kg	33,576 lb
Rear Blade, Front Outriggers	16 170 kg	35,649 lb
Front and Rear Outriggers	16 420 kg	36,200 lb

\*Operating weight includes full fuel tank, operator, bucket 500 kg (1,102 lb) and dual tires. Weight varies depending on configuration.

\*\*Typical configurations include 2500 mm (8'2") stick, 3100 kg (6,834 lb) counterweight, full fuel tank, operator, 210 kg (463 lb) quick coupler, 500 kg (1,102 lb) bucket and dual pneumatic tires.

# M314 Wheeled Excavator Specifications

## Major Component Weights

Booms (including VA and stick cylinder, pins and standard hydraulic lines)		
Variable Adjustable Boom 5028 mm (16'6")	1860 kg	4,100 lb
Sticks (including cylinder, bucket linkage, pins and standard hydraulic lines)		
Stick 2200 mm (7'3")	630 kg	1,390 lb
Stick 2500 mm (8'2")	620 kg	1,370 lb
Drop Nose Stick (no bucket linkage) 2900 mm (9'6")	380 kg	840 lb
Counterweights		
3100 kg (6,834 lb)	3100 kg	6,834 lb
Undercarriage (including axles, standard tires and steps)		
Rear Blade	4120 kg	9,080 lb
Rear Blade/Front Outrigger	5060 kg	11,160 lb
Rear Outrigger/Front Blade	5060 kg	11,160 lb
Rear Outrigger/Front Outrigger	5330 kg	11,750 lb
Set of Tires		
Standard Dual-Tires 10-20	810 kg	1,790 lb
Hard Rock Dual-Tires 10-20	1100 kg	2,430 lb
No Gap type Dual-Tires 315/70 R22.5	1040 kg	2,290 lb
Single Tires 445/70 R19.5	590 kg	1,300 lb
Solid Rubber Tires 10-20	1810 kg	3,990 lb
Buckets (without linkage)		
CW Bucket GD 1200 mm (47"), 0.76 m <sup>3</sup> (0.99 yd <sup>3</sup> ), Advansys™	510 kg	1,120 lb
Pin-On Bucket GD 1200 mm (47"), 0.76 m <sup>3</sup> (0.99 yd <sup>3</sup> ), Advansys	500 kg	1,100 lb
Quick Couplers		
CW20	210 kg	460 lb
Pin Grabber	190 kg	420 lb

## Hydraulic System

Maximum Pressure – Implement Circuit		
Normal	35 000 kPa	5,076 psi
Heavy Lift	37 000 kPa	5,366 psi
Travel Circuit	35 000 kPa	5,076 psi
Maximum Pressure – Auxiliary Circuit		
High Pressure	35 000 kPa	5,076 psi
Medium Pressure	17 000 kPa	2,466 psi
Swing Mechanism	35 500 kPa	5,149 psi
Maximum Flow		
Implements	270 L/min	71.3 gal/min
Travel Circuit	200 L/min	52.8 gal/min
Auxiliary Circuit		
High Pressure	250 L/min	66.0 gal/min
Medium Pressure	62 L/min	16.4 gal/min
Swing Mechanism	83 L/min	21.9 gal/min
Cylinders		
Boom Cylinder (VA) – Bore	105 mm	4"
Boom Cylinder (VA) – Stroke	906 mm	3'0"
VA Cylinder – Bore	130 mm	5"
VA Cylinder – Stroke	753 mm	2'6"
Stick Cylinder – Bore	110 mm	4"
Stick Cylinder – Stroke	1147 mm	3'9"
Bucket Cylinder – Bore	95 mm	4"
Bucket Cylinder – Stroke	939 mm	3'1"

## Tires

Standard	10.00-20 (dual pneumatic)
Optional	10.00-20 (dual solid rubber) 315/70R22.5 (dual pneumatic without spacer) 10-20 Hard Rock Dual-Tires 445/70/R19.5 TL XF (single pneumatic)

# M314 Wheeled Excavator Specifications

## Dozer Blade

Blade Type	Radial	
Width	2540 mm	8'4"
Blade Roll-Over Height	540 mm	1'9"
Blade Total Height	580 mm	1'11"
Maximum Lowering Depth from Ground	120 mm	5"
Maximum Raising Height above Ground	475 mm	1'7"

## Emissions and Safety

Engine Emissions	Tier 4 Final and Stage V	
Vibration Levels		
Maximum Hand/Arm (ISO 5349-2001)	<2.5 m/s <sup>2</sup>	<8.2
Maximum Whole Body (ISO/TR 25398:2006)	<0.5 m/s <sup>2</sup>	<1.6
Seat Transmissibility Factor (ISO 7096:2000-spectral class EM5)	<0.7	

## Standards

Brakes	ISO 3450:2011
Cab (ROPS)	ISO 12117-2:2008
FOPS (Falling Object Protective Structure) (optional top/front guards)	ISO 10262:1998
Cab/Sound Levels	Meets appropriate standards as listed below

## Sound Performance

Operator Sound	
2000/14/EC	71 dB(A)
Spectator Sound	
2000/14/EC	102 dB(A)

- Operator Sound – The operator sound level is measured according to the procedures specified in 2000/14/EC, for a cab offered by Caterpillar, when properly installed and maintained and tested with the door and windows closed.
- Exterior Sound – The labeled spectator sound power level is measured according to the test procedures and conditions specified in 2000/14/EC.
- Hearing protection may be needed when operating with an open operator station and cab (when not properly maintained for doors/windows open) for extended periods or in noisy environment(s).
- Blue Angel Certified

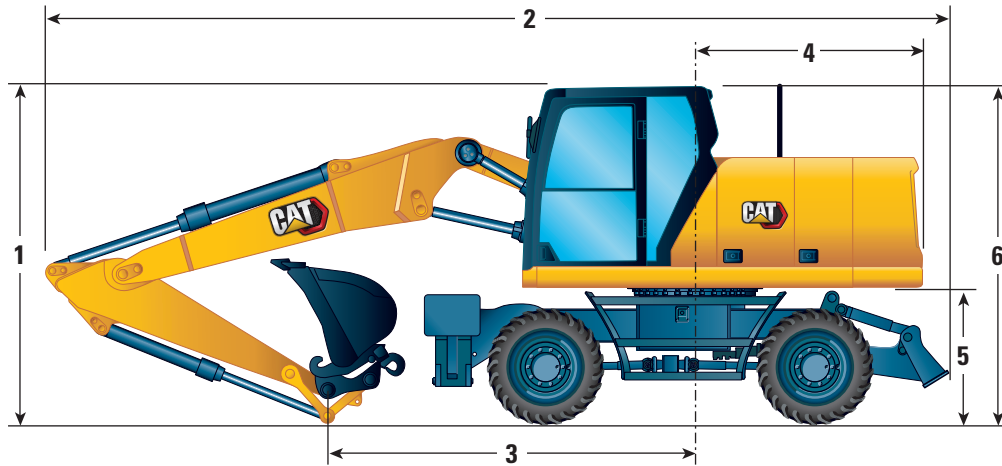
## Air Conditioning System

The air conditioning system on this machine contains the fluorinated greenhouse gas refrigerant R134a (Global Warming Potential = 1430). The system contains 0.85 kg of refrigerant which has a CO<sub>2</sub> equivalent of 1.216 metric tonnes.

# M314 Wheeled Excavator Specifications

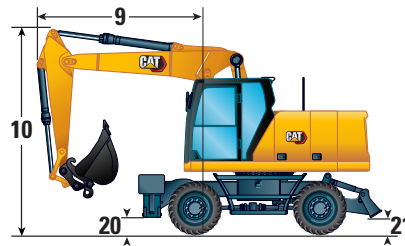
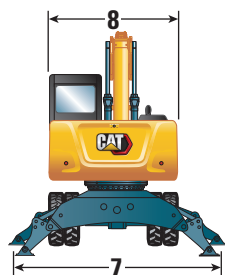
## Dimensions

All dimensions are approximate. Values are with 10.00-20 dual pneumatic tires.



Boom Options	Variable Adjustable Boom 5028 mm (16'6")		
	Bucket Linkage 2200 mm (7'3")	Bucket Linkage 2500 mm (8'2")	Drop Nose* 2900 mm (9'6")
<b>Stick Options</b>			
1 Shipping Height with Falling Object Guard (highest point between Boom and Cab)	3315 mm (10'11")	3315 mm (10'11")	3315 mm (10'11")
2 Shipping Length	8210 mm (26'11")	8210 mm (26'11")	8190 mm (26'10")
3 Support Point	3450 mm (11'4")	3280 mm (10'9")	3545 mm (11'8")
4 Tail Swing Radius	2150 mm (7'1")	2150 mm (7'1")	2150 mm (7'1")
5 Counterweight Clearance	1260 mm (4'2")	1260 mm (4'2")	1260 mm (4'2")
6 Cab Height			
No Falling Object Guard, Handrails Lowered	3153 mm (10'4")	3153 mm (10'4")	3153 mm (10'4")
With Falling Object Guard	3315 mm (10'11")	3315 mm (10'11")	3315 mm (10'11")
Overall Machine Width			
Width with Outriggers on Ground	3680 mm (12'1")	3680 mm (12'1")	3680 mm (12'1")
Width with Outriggers Up	2540 mm (8'4")	2540 mm (8'4")	2540 mm (8'4")
Width with Blade	2540 mm (8'4")	2540 mm (8'4")	2540 mm (8'4")
7 Width with Outriggers Fully Down	3645 mm (12'0")	3645 mm (12'0")	3645 mm (12'0")
8 Upperframe Width	2480 mm (8'2")	2480 mm (8'2")	2480 mm (8'2")
Roading Position			
9 Steering Wheel to Linkage in Roading Position	2630 mm (8'8")	2600 mm (8'6")	—
10 Height in Roading Position	3980 mm (13'1")	3980 mm (13'1")	—

\*Without bucket linkage.



# M314 Wheeled Excavator Specifications

## Undercarriage Dimensions

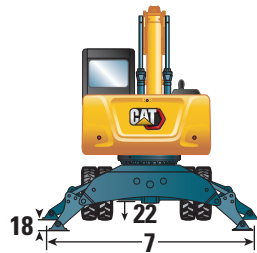
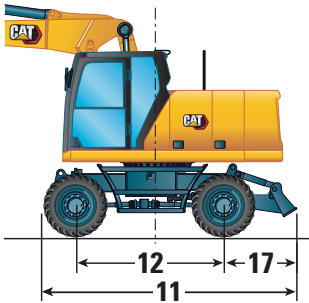
All dimensions are approximate. Values are with 10.00-20 dual pneumatic tires.

Undercarriage	Rear Blade	Rear Blade/Front Outrigger	Rear Outrigger/ Front Blade	Rear Outrigger/ Front Outrigger
<b>11</b> Overall Undercarriage Length	4310 mm (14'2")	4920 mm (16'2")	4920 mm (16'2")	4755 mm (15'7")
<b>12</b> Wheel Base	2500 mm (8'2")	2500 mm (8'2")	2500 mm (8'2")	2500 mm (8'2")
<b>13</b> Swing to Rear Axle	1100 mm (3'7")	1100 mm (3'7")	1100 mm (3'7")	1100 mm (3'7")
<b>14</b> Swing to Front Axle	1400 mm (4'7")	1400 mm (4'7")	1400 mm (4'7")	1400 mm (4'7")
<b>15</b> Rear Axle to Rear Outrigger (mid)	—	—	830 mm (2'9")	830 mm (2'9")
<b>16</b> Front Axle to Front Outrigger (mid)	—	875 mm (2'10")	—	875 mm (2'10")
<b>17</b> Rear Axle to Blade (end) Front Axle to Blade (end)	1270 mm (4'2")	1270 mm (4'2")	—	—
<b>18</b> Maximum Outrigger Depth	—	110 mm (4")	110 mm (4")	110 mm (4")
<b>19</b> Blade Width Maximum Blade Depth	2540 mm (8'4")	2540 mm (8'4")	2540 mm (8'4")	—
Ground Clearance	120 mm (5")	120 mm (5")	120 mm (5")	—
<b>20</b> Outrigger Clearance	—	335 mm (1'1")	335 mm (1'1")	335 mm (1'1")
<b>21</b> Blade Clearance	475 mm (1'7")	475 mm (1'7")	475 mm (1'7")	—
<b>22</b> Axle Clearance	360 mm (1'2")	360 mm (1'2")	360 mm (1'2")	360 mm (1'2")

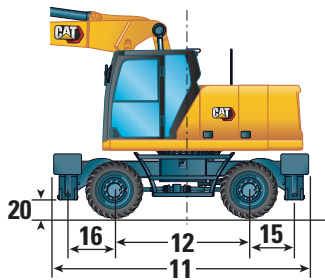
\*Maximum tire clearance with outrigger fully down



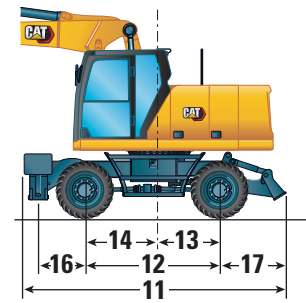
Undercarriage with dozer only



Undercarriage with 2 sets of outriggers



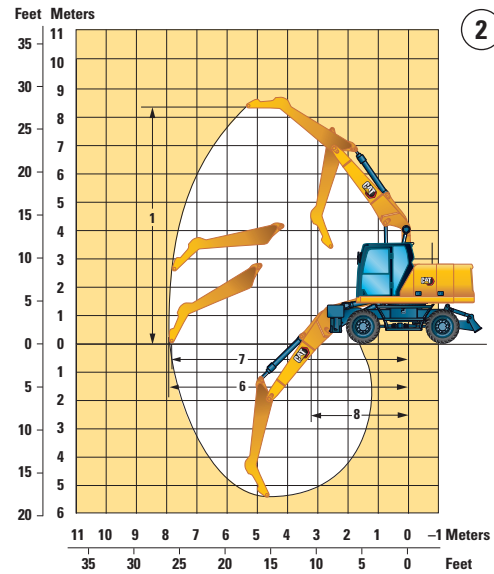
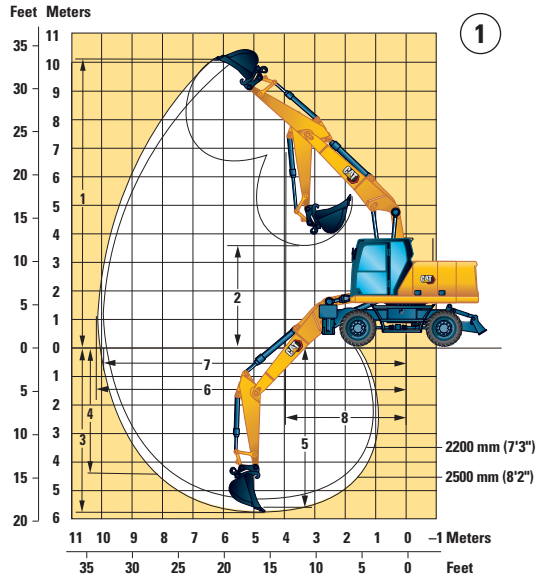
Undercarriage with 1 set of outriggers and dozer



# M314 Wheeled Excavator Specifications

## Working Ranges

All dimensions are approximate. Values are with 10.00-20 dual pneumatic tires.



### Boom Option

### Variable Adjustable Boom 5028 mm (16'6")

Stick Options	Variable Adjustable Boom 5028 mm (16'6")		
	①	②	③
	Bucket Linkage 2200 mm (7'3")	Bucket Linkage 2500 mm (8'2")	Drop Nose 2900 mm (9'6")
1 Digging Height	9780 mm (32'1")	10 020 mm (32'10")	8530 mm (28'0")
2 Dump Height	7010 mm (23'0")	7240 mm (23'9")	—
3 Digging Depth	5290 mm (17'4")	5580 mm (18'4")	4510 mm (14'9")
4 Vertical Wall Digging Depth	4250 mm (13'11")	4580 mm (15'0")	—
5 Depth 2.5 m (8'2") in Straight Clean-Up	5170 mm (17'0")	5480 mm (18'0")	—
6 Reach	8830 mm (29'0")	9120 mm (29'11")	7920 mm (26'0")
7 Reach at Ground Level	8650 mm (28'5")	8940 mm (29'4")	7720 mm (25'4")
8 Minimum Front Linkage Radius	2600 mm (8'6")	2700 mm (8'10")	3114 mm (10'3")
Bucket Forces (ISO)	105 kN (23,605 lbf)	105 kN (23,605 lbf)	—
Stick Forces (ISO)	71 kN (15,961 lbf)	65 kN (14,613 lbf)	—
Bucket Type	GD	GD	—
Bucket Capacity	0.76 m <sup>3</sup> (0.99 yd <sup>3</sup> )	0.76 m <sup>3</sup> (0.99 yd <sup>3</sup> )	—
Bucket Tip Radius (Pin-On)	1224 mm (4'0")	1224 mm (4'0")	—
Bucket Tip Radius (QC)	1387 mm (4'7")	1387 mm (4'7")	—

Range values are with dual pneumatic tires (10.00-20).

A drop nose stick has no bucket linkage and working range dimensions refer to the stick nose pin.

Range values are calculated with a GD bucket (CW-S) and CW-20S-D.4.N quick coupler with a tip radius of 1387 mm (4'7").

Force values are calculated with heavy lift on, a GD bucket (pin-on) and a tip radius of 1224 mm (4'0").

# M314 Wheeled Excavator Specifications

## Bucket Specifications and Compatibility – North America

Contact your Cat dealer for special bucket requirements.

Linkage	Width		Capacity		Weight		Fill	3100 kg (6,834 lb) Counterweight								
								Variable Adjustable Boom								
								2200 mm (7'3") Stick				2500 mm (8'2") Stick				
								Free on wheels	Rear dozer blade lowered	Front dozer and rear stabilizer lowered	Four stabilizers lowered	Free on wheels	Rear dozer blade lowered	Front dozer and rear stabilizer lowered	Four stabilizers lowered	
mm	in	m <sup>3</sup>	yd <sup>3</sup>	kg	lb	%	kg	lb	kg	lb	kg	lb	kg	lb		
<b>Pin-On (No Quick Coupler)</b>																
General Duty (GD)	312	450	18	0.20	0.27	278	614	100	●	●	●	●	●	●	●	●
	312	600	24	0.31	0.40	320	706	100	●	●	●	●	●	●	●	●
	312	750	30	0.41	0.54	369	815	100	●	●	●	●	●	●	●	●
	312	900	36	0.53	0.69	425	936	100	⊙	●	●	●	⊙	●	●	●
	312	1050	42	0.65	0.84	468	1,031	100	⊖	⊙	●	●	⊖	⊙	●	●
General Duty (GD) – Wide Tip	312	450	18	0.27	0.36	317	700	100	●	●	●	●	●	●	●	●
	312	600	24	0.41	0.53	372	821	100	●	●	●	●	●	●	●	●
	312	900	36	0.71	0.92	478	1,053	100	○	⊙	●	●	○	⊖	●	●
	312	1050	42	0.86	1.13	530	1,168	100	◇	○	●	●	◇	○	●	●
Severe Duty (SD)	312	600	24	0.31	0.40	374	825	90	●	●	●	●	●	●	●	●
	312	750	30	0.41	0.54	434	957	90	●	●	●	●	●	●	●	●
	312	900	36	0.53	0.69	495	1,091	90	●	●	●	●	⊙	●	●	●
Ditch Cleaning (DC)	312	1200	48	0.57	0.74	388	855	100	⊙	●	●	●	⊙	●	●	●
	312	1500	60	0.74	0.97	455	1,003	100	○	⊖	●	●	○	⊖	●	●
Ditch Cleaning Tilt (DCT)	312	1200	48	0.48	0.63	563	1,240	100	⊙	●	●	●	⊙	●	●	●
	312	1500	60	0.57	0.75	646	1,424	100	⊖	⊙	●	●	○	⊖	●	●
							kg	1468	1696	2826	3465	1396	1612	2679	3280	
							lb	3,237	3,740	6,230	7,638	3,077	3,554	5,906	7,230	
<b>With Cat Pin Grabber Coupler</b>																
General Duty (GD)	312	450	18	0.20	0.27	278	614	100	●	●	●	●	●	●	●	●
	312	600	24	0.31	0.40	320	706	100	●	●	●	●	●	●	●	●
	312	750	30	0.41	0.54	369	815	100	●	●	●	●	●	●	●	●
	312	900	36	0.53	0.69	425	936	100	⊙	●	●	●	⊙	●	●	●
	312	1050	42	0.65	0.84	468	1,031	100	⊖	⊙	●	●	⊖	⊙	●	●
General Duty (GD) – Wide Tip	312	450	18	0.27	0.36	317	700	100	●	●	●	●	●	●	●	●
	312	600	24	0.41	0.53	372	821	100	●	●	●	●	●	●	●	●
	312	750	30	0.55	0.72	425	936	100	⊙	●	●	●	⊙	●	●	●
	312	900	36	0.71	0.92	478	1,053	100	○	⊙	●	●	○	⊖	●	●
Severe Duty (SD)	312	600	24	0.31	0.40	374	825	90	●	●	●	●	●	●	●	●
	312	750	30	0.41	0.54	434	957	90	●	●	●	●	●	●	●	●
	312	900	36	0.53	0.69	495	1,091	90	●	●	●	●	⊙	●	●	●
Ditch Cleaning (DC)	312	1200	48	0.57	0.74	388	855	100	⊙	●	●	●	⊙	●	●	●
	312	1500	60	0.74	0.97	455	1,003	100	○	⊖	●	●	○	⊖	●	●
Ditch Cleaning Tilt (DCT)	312	1200	48	0.48	0.63	563	1,240	100	⊙	●	●	●	⊙	●	●	●
	312	1500	60	0.57	0.75	646	1,424	100	⊖	⊙	●	●	○	⊖	●	●
							kg	1268	1497	2626	3265	1196	1412	2479	3080	
							lb	2,796	3,299	5,790	7,198	2,637	3,113	5,466	6,790	

### Maximum Material Density:

- 2100 kg/m<sup>3</sup> (3,500 lb/yd<sup>3</sup>)
- ⊙ 1800 kg/m<sup>3</sup> (3,000 lb/yd<sup>3</sup>)
- ⊖ 1500 kg/m<sup>3</sup> (2,500 lb/yd<sup>3</sup>)
- 1200 kg/m<sup>3</sup> (2,000 lb/yd<sup>3</sup>)
- ◇ 900 kg/m<sup>3</sup> (1,500 lb/yd<sup>3</sup>)
- X Not Recommended

The above loads are in compliance with hydraulic excavator standard EN474-5:2006+A3:2013, they do not exceed 87% of hydraulic lifting capacity or 75% of tipping capacity with front linkage fully extended at ground line with bucket curled.

Capacity based on ISO 7451.

Caterpillar recommends using appropriate work tools to maximize the value customers receive from our products. Use of work tools, including buckets, which are outside of Caterpillar's recommendations or specifications for weight, dimensions, flows, pressures, etc. may result in less-than-optimal performance, including but not limited to reductions in production, stability, reliability, and component durability. Improper use of a work tool resulting in sweeping, prying, twisting and/or catching of heavy loads will reduce the life of the boom and stick.

# M314 Wheeled Excavator Specifications

## Bucket Specifications and Compatibility – Europe

Contact your Cat dealer for special bucket requirements.

Linkage	Width		Capacity		Weight		Fill	3100 kg (6,834 lb) Counterweight										
								Variable Adjustable Boom										
								2200 mm (7'3") Stick				2500 mm (8'2") Stick						
								Free on wheels	Rear dozer blade lowered	Front dozer and rear stabilizer lowered	Four stabilizers lowered	Free on wheels	Rear dozer blade lowered	Front dozer and rear stabilizer lowered	Four stabilizers lowered			
<b>Pin-On (No Quick Coupler)</b>																		
Utility Duty (UD)	312	600	24	0.31	0.40	327	722	100	●	●	●	●	●	●	●	●	●	●
	312	1200	48	0.76	1.00	515	1,134	100	○	⊖	●	●	○	⊖	●	●	●	
General Duty (GD)	312	600	24	0.31	0.40	317	699	100	●	●	●	●	●	●	●	●	●	
	312	1000	39	0.60	0.78	439	969	100	⊙	●	●	●	⊖	⊙	●	●	●	
	312	1100	43	0.68	0.89	474	1,046	100	⊖	⊙	●	●	○	⊖	●	●	●	
General Duty (GD) (No Adjuster)	312	450	18	0.20	0.26	267	589	100	●	●	●	●	●	●	●	●	●	
	312	500	20	0.24	0.31	287	633	100	●	●	●	●	●	●	●	●	●	
	312	750	30	0.41	0.54	358	790	100	●	●	●	●	●	●	●	●	●	
	312	900	36	0.53	0.69	426	939	100	⊙	●	●	●	⊙	●	●	●	●	
	312	1050	42	0.65	0.84	479	1,055	100	⊖	⊙	●	●	○	⊙	●	●	●	
	312	1200	48	0.76	1.00	519	1,143	100	○	⊖	●	●	○	⊖	●	●	●	
Heavy Duty (HD)	312	450	18	0.20	0.27	289	637	100	●	●	●	●	●	●	●	●	●	
	312	1200	48	0.76	0.99	533	1,174	100	○	⊖	●	●	◇	○	●	●	●	
Severe Duty (SD)	312	900	36	0.53	0.69	475	1,047	90	●	●	●	●	⊙	●	●	●	●	
Ditch Cleaning (DC)	312	1800	72	0.68	0.89	540	1,191	100	○	⊖	●	●	○	⊖	●	●	●	
	312	1800	71	0.57	0.74	421	928	100	⊙	●	●	●	⊙	●	●	●	●	
Ditch Cleaning Tilt (DCT)	312	1800	72	0.60	0.78	724	1,597	100	○	⊖	●	●	◇	⊖	●	●	●	
Maximum load with pin-on (payload + bucket)								kg	1468	1696	2826	3465	1396	1612	2679	3280		
								lb	3,237	3,740	6,230	7,638	3,077	3,554	5,906	7,230		
<b>With Cat Pin Grabber Coupler</b>																		
Utility Duty (UD)	312	600	24	0.31	0.40	327	722	100	●	●	●	●	●	●	●	●	●	
	312	1200	48	0.76	1.00	515	1,134	100	○	⊖	●	●	○	⊖	●	●	●	
General Duty (GD)	312	600	24	0.31	0.40	317	699	100	●	●	●	●	●	●	●	●	●	
	312	1000	39	0.60	0.78	439	969	100	⊙	●	●	●	⊖	⊙	●	●	●	
	312	1100	43	0.68	0.89	474	1,046	100	⊖	⊙	●	●	○	⊖	●	●	●	
General Duty (GD) (No Adjuster)	312	450	18	0.20	0.26	267	589	100	●	●	●	●	●	●	●	●	●	
	312	500	20	0.24	0.31	287	633	100	●	●	●	●	●	●	●	●	●	
	312	750	30	0.41	0.54	358	790	100	●	●	●	●	●	●	●	●	●	
	312	900	36	0.53	0.69	426	939	100	⊙	●	●	●	⊙	●	●	●	●	
	312	1050	42	0.65	0.84	479	1,055	100	⊖	⊙	●	●	○	⊙	●	●	●	
	312	1200	48	0.76	1.00	519	1,143	100	○	⊖	●	●	○	⊖	●	●	●	
Heavy Duty (HD)	312	450	18	0.20	0.27	289	637	100	●	●	●	●	●	●	●	●	●	
	312	1200	48	0.76	0.99	533	1,174	100	○	⊖	●	●	◇	○	●	●	●	
Severe Duty (SD)	312	900	36	0.53	0.69	475	1,047	90	●	●	●	●	⊙	●	●	●	●	
Ditch Cleaning (DC)	312	1800	72	0.68	0.89	540	1,191	100	○	⊖	●	●	○	⊖	●	●	●	
	312	1800	71	0.57	0.74	421	928	100	⊙	●	●	●	⊙	●	●	●	●	
Maximum load with coupler (payload + bucket)								kg	1268	1497	2626	3265	1196	1412	2479	3080		
								lb	2,796	3,299	5,790	7,198	2,637	3,113	5,466	6,790		

### Maximum Material Density:

- 2100 kg/m<sup>3</sup> (3,500 lb/yd<sup>3</sup>)
- ⊙ 1800 kg/m<sup>3</sup> (3,000 lb/yd<sup>3</sup>)
- ⊖ 1500 kg/m<sup>3</sup> (2,500 lb/yd<sup>3</sup>)
- 1200 kg/m<sup>3</sup> (2,000 lb/yd<sup>3</sup>)
- ◇ 900 kg/m<sup>3</sup> (1,500 lb/yd<sup>3</sup>)

The above loads are in compliance with hydraulic excavator standard EN474-5:2006+A3:2013, they do not exceed 87% of hydraulic lifting capacity or 75% of tipping capacity with front linkage fully extended at ground line with bucket curled. Capacity based on ISO 7451.

Caterpillar recommends using appropriate work tools to maximize the value customers receive from our products. Use of work tools, including buckets, which are outside of Caterpillar's recommendations or specifications for weight, dimensions, flows, pressures, etc. may result in less-than-optimal performance, including but not limited to reductions in production, stability, reliability, and component durability. Improper use of a work tool resulting in sweeping, prying, twisting and/or catching of heavy loads will reduce the life of the boom and stick.

(continued on next page)

# M314 Wheeled Excavator Specifications

## Bucket Specifications and Compatibility – Europe (continued)

Contact your Cat dealer for special bucket requirements.

	Linkage	Width		Capacity		Weight		Fill	3100 kg (6,834 lb) Counterweight								
		mm	in	m <sup>3</sup>	yd <sup>3</sup>	kg	lb		%	Variable Adjustable Boom							
										2200 mm (7'3") Stick				2500 mm (8'2") Stick			
										Free on wheels	Rear dozer blade lowered	Front dozer and rear stabilizer lowered	Four stabilizers lowered	Free on wheels	Rear dozer blade lowered	Front dozer and rear stabilizer lowered	Four stabilizers lowered
<b>With CW20 Coupler</b>																	
General Duty (GD)	CW20	600	24	0.31	0.40	344	758	100	●	●	●	●	●	●	●	●	●
	CW20	900	36	0.53	0.69	426	940	100	⊖	●	●	●	⊖	⊙	●	●	
	CW20	1100	43	0.68	0.89	487	1,073	100	○	⊖	●	●	○	○	●	●	
Heavy Duty (HD)	CW20	1200	48	0.76	1.00	526	1,159	100	◇	○	●	●	◇	○	●	●	
General Duty (GD) Leveling Edge	CW20	690	27	0.40	0.52	410	904	100	●	●	●	●	⊙	●	●	●	
	CW20	790	31	0.47	0.61	452	997	100	⊙	●	●	●	⊖	●	●	●	
	CW20	996	39	0.63	0.83	515	1,135	100	○	⊖	●	●	○	○	●	●	
	CW20	1184	47	0.80	1.05	601	1,324	100	X	◇	●	●	X	◇	●	●	
Ditch Cleaning (DC)	CW20	1800	72	0.68	0.89	516	1,138	100	◇	⊖	●	●	◇	○	●	●	
	CW20	1800	72	0.90	1.18	554	1,221	100	X	◇	●	●	X	◇	●	●	
Maximum load with coupler (payload + bucket)									kg	1263	1491	2621	3260	1191	1407	2474	3075
									lb	2,785	3,288	5,778	7,186	2,626	3,102	5,454	6,778
<b>With CW20S Coupler</b>																	
General Duty (GD)	CW20S	450	18	0.20	0.26	302	666	100	●	●	●	●	●	●	●	●	
	CW20S	500	20	0.24	0.31	311	686	100	●	●	●	●	●	●	●	●	
	CW20S	600	24	0.31	0.40	330	728	100	●	●	●	●	●	●	●	●	
	CW20S	750	30	0.41	0.54	377	832	100	●	●	●	●	●	●	●	●	
	CW20S	900	36	0.53	0.69	426	940	100	⊖	●	●	●	⊖	⊙	●	●	
	CW20S	1000	39	0.60	0.78	451	995	100	○	⊙	●	●	○	⊖	●	●	
	CW20S	1100	43	0.68	0.89	487	1,073	100	○	⊖	●	●	◇	○	●	●	
Heavy Duty (HD)	CW20S	1200	48	0.76	1.00	516	1,137	100	◇	○	●	●	◇	○	●	●	
	CW20S	500	20	0.24	0.31	321	708	100	●	●	●	●	●	●	●	●	
Ditch Cleaning (DC)	CW20S	1200	48	0.76	1.00	526	1,160	100	◇	○	●	●	◇	○	●	●	
Ditch Cleaning (DCT)	CW20S	1800	72	0.68	0.89	457	1,008	100	○	⊖	●	●	◇	⊖	●	●	
Ditch Cleaning Tilt (DCT)	CW20S	1800	72	0.60	0.78	732	1,614	100	◇	○	●	●	X	○	●	●	
Maximum load with coupler (payload + bucket)									kg	1285	1513	2643	3282	1213	1429	2496	3097
									lb	2,833	3,336	5,827	7,235	2,674	3,150	5,503	6,827
<b>Pin-On, TRS10 CW20</b>																	
Grading – General Duty	312	1600	63	0.76	0.99	571	1,259	100	X	X	●	●	X	X	●	●	
Maximum load with pin-on (payload + bucket)									kg	923	1151	2281	2920	851	1067	2134	2735
									lb	2,035	2,538	5,029	6,437	1,876	2,352	4,704	6,029

### Maximum Material Density:

- 2100 kg/m<sup>3</sup> (3,500 lb/yd<sup>3</sup>)
- ⊙ 1800 kg/m<sup>3</sup> (3,000 lb/yd<sup>3</sup>)
- ⊖ 1500 kg/m<sup>3</sup> (2,500 lb/yd<sup>3</sup>)
- 1200 kg/m<sup>3</sup> (2,000 lb/yd<sup>3</sup>)
- ◇ 900 kg/m<sup>3</sup> (1,500 lb/yd<sup>3</sup>)
- X Not Recommended

The above loads are in compliance with hydraulic excavator standard EN474-5:2006+A3:2013, they do not exceed 87% of hydraulic lifting capacity or 75% of tipping capacity with front linkage fully extended at ground line with bucket curled. Capacity based on ISO 7451.

Caterpillar recommends using appropriate work tools to maximize the value customers receive from our products. Use of work tools, including buckets, which are outside of Caterpillar's recommendations or specifications for weight, dimensions, flows, pressures, etc. may result in less-than-optimal performance, including but not limited to reductions in production, stability, reliability, and component durability. Improper use of a work tool resulting in sweeping, prying, twisting and/or catching of heavy loads will reduce the life of the boom and stick.

(continued on next page)

# M314 Wheeled Excavator Specifications

## Bucket Specifications and Compatibility – Europe (continued)

Contact your Cat dealer for special bucket requirements.

	Linkage	Width		Capacity		Weight		Fill	3100 kg (6,834 lb) Counterweight							
									Variable Adjustable Boom							
									2200 mm (7'3") Stick				2500 mm (8'2") Stick			
									Free on wheels	Rear dozer blade lowered	Front dozer and rear stabilizer lowered	Four stabilizers lowered	Free on wheels	Rear dozer blade lowered	Front dozer and rear stabilizer lowered	Four stabilizers lowered
mm	in	m <sup>3</sup>	yd <sup>3</sup>	kg	lb	%	kg	lb	kg	lb	kg	lb	kg	lb		
<b>Pin-On, TRS10 CW20S</b>																
Grading – General Duty	312	1500	59	0.65	0.85	528	1,164	100	X	◇	●	●	X	X	●	●
Trenching – General Duty	312	540	21	0.37	0.48	336	740	100	⊖	●	●	●	○	⊙	●	●
								kg	912	1140	2270	2909	840	1056	2123	2724
								lb	2,011	2,514	5,004	6,413	1,852	2,328	4,680	6,004
<b>Pin-On, TRS10 S60</b>																
Grading – Heavy Duty	312	1500	59	0.52	0.68	511	1,127	100	◇	⊖	●	●	◇	○	●	●
	312	1500	59	0.65	0.85	535	1,179	100	X	◇	●	●	X	◇	●	●
	312	1600	63	0.75	0.98	576	1,270	100	X	◇	●	●	X	X	●	●
Trenching – Heavy Duty	312	540	21	0.33	0.43	320	706	100	●	●	●	●	⊙	●	●	●
								kg	1041	1269	2399	3038	969	1185	2252	2853
								lb	2,295	2,798	5,289	6,697	2,136	2,612	4,965	6,289
<b>With CW20S, TRS10 CW20S</b>																
Grading – Heavy Duty	312	1500	59	0.65	0.85	528	1,164	100	X	X	●	●	X	X	●	●
Trenching – Heavy Duty	312	540	21	0.37	0.48	336	740	100	◇	⊖	●	●	X	⊖	●	●
								kg	719	947	2077	2716	647	863	1930	2531
								lb	1,585	2,089	4,579	5,987	1,426	1,903	4,255	5,579
<b>With S60, TRS10 S60</b>																
Grading – Heavy Duty	312	1500	59	0.52	0.68	511	1,127	100	X	○	●	●	X	◇	●	●
	312	1500	59	0.65	0.85	535	1,179	100	X	◇	●	●	X	X	●	●
	312	1600	63	0.75	0.98	576	1,270	100	X	X	●	●	X	X	●	●
Trenching – Heavy Duty	312	540	21	0.33	0.43	320	706	100	⊖	●	●	●	⊖	●	●	●
								kg	881	1109	2239	2878	809	1025	2092	2693
								lb	1,942	2,446	4,936	6,344	1,783	2,260	4,612	5,936

### Maximum Material Density:

- 2100 kg/m<sup>3</sup> (3,500 lb/yd<sup>3</sup>)
- ⊙ 1800 kg/m<sup>3</sup> (3,000 lb/yd<sup>3</sup>)
- ⊖ 1500 kg/m<sup>3</sup> (2,500 lb/yd<sup>3</sup>)
- 1200 kg/m<sup>3</sup> (2,000 lb/yd<sup>3</sup>)
- ◇ 900 kg/m<sup>3</sup> (1,500 lb/yd<sup>3</sup>)
- X Not Recommended

The above loads are in compliance with hydraulic excavator standard EN474-5:2006+A3:2013, they do not exceed 87% of hydraulic lifting capacity or 75% of tipping capacity with front linkage fully extended at ground line with bucket curled.

Capacity based on ISO 7451.

Caterpillar recommends using appropriate work tools to maximize the value customers receive from our products. Use of work tools, including buckets, which are outside of Caterpillar's recommendations or specifications for weight, dimensions, flows, pressures, etc. may result in less-than-optimal performance, including but not limited to reductions in production, stability, reliability, and component durability. Improper use of a work tool resulting in sweeping, prying, twisting and/or catching of heavy loads will reduce the life of the boom and stick.

# M314 Wheeled Excavator Specifications

## Bucket Specifications and Compatibility – Australia and New Zealand

Contact your Cat dealer for special bucket requirements.

Linkage	Width		Capacity		Weight		Fill	3100 kg (6,834 lb) Counterweight								
								Variable Adjustable Boom								
								2200 mm (7'3") Stick				2500 mm (8'2") Stick				
								Free on wheels	Rear dozer blade lowered	Front dozer and rear stabilizer lowered	Four stabilizers lowered	Free on wheels	Rear dozer blade lowered	Front dozer and rear stabilizer lowered	Four stabilizers lowered	
mm	in	m <sup>3</sup>	yd <sup>3</sup>	kg	lb	%	kg	lb	kg	lb	kg	lb	kg	lb		
<b>Pin-On (No Quick Coupler)</b>																
General Duty (GD) (No Adjuster)	312	450	18	0.20	0.26	267	589	100	●	●	●	●	●	●	●	●
	312	500	20	0.24	0.31	287	633	100	●	●	●	●	●	●	●	●
	312	600	24	0.31	0.40	310	684	100	●	●	●	●	●	●	●	●
	312	750	30	0.41	0.54	358	790	100	●	●	●	●	●	●	●	●
	312	750	30	0.41	0.54	413	911	100	●	●	●	●	●	●	●	●
	312	900	36	0.53	0.69	426	939	100	⊙	●	●	●	⊙	●	●	●
	312	900	36	0.53	0.69	454	1,001	100	⊙	●	●	●	⊙	●	●	●
	312	1050	42	0.65	0.84	479	1,055	100	⊖	⊙	●	●	⊖	⊙	●	●
Ditch Cleaning Tilt (DCT)	312	1500	60	0.74	0.98	704	1,553	100	◇	○	●	●	◇	○	●	●
	312	1800	72	0.90	1.18	784	1,728	100	X	◇	●	●	X	◇	●	●
Maximum load with pin-on (payload + bucket)								kg	1468	1696	2826	3465	1396	1612	2679	3280
								lb	3,237	3,740	6,230	7,638	3,077	3,554	5,906	7,230
<b>With Cat Pin Grabber Coupler</b>																
General Duty (GD) (No Adjuster)	312	450	18	0.20	0.26	267	589	100	●	●	●	●	●	●	●	●
	312	500	20	0.24	0.31	287	633	100	●	●	●	●	●	●	●	●
	312	600	24	0.31	0.40	310	684	100	●	●	●	●	●	●	●	●
	312	750	30	0.41	0.54	358	790	100	●	●	●	●	●	●	●	●
	312	750	30	0.41	0.54	413	911	100	●	●	●	●	●	●	●	●
	312	900	36	0.53	0.69	426	939	100	⊙	●	●	●	⊙	●	●	●
	312	900	36	0.53	0.69	454	1,001	100	⊙	●	●	●	⊙	●	●	●
	312	1050	42	0.65	0.84	479	1,055	100	⊖	⊙	●	●	⊖	⊙	●	●
Ditch Cleaning Tilt (DCT)	312	1500	60	0.74	0.98	704	1,553	100	◇	○	●	●	◇	○	●	●
	312	1800	72	0.90	1.18	784	1,728	100	X	◇	●	●	X	◇	●	●
Maximum load with coupler (payload + bucket)								kg	1268	1497	2626	3265	1196	1412	2479	3080
								lb	2,796	3,299	5,790	7,198	2,637	3,113	5,466	6,790

### Maximum Material Density:

- 2100 kg/m<sup>3</sup> (3,500 lb/yd<sup>3</sup>)
- ⊙ 1800 kg/m<sup>3</sup> (3,000 lb/yd<sup>3</sup>)
- ⊖ 1500 kg/m<sup>3</sup> (2,500 lb/yd<sup>3</sup>)
- 1200 kg/m<sup>3</sup> (2,000 lb/yd<sup>3</sup>)
- ◇ 900 kg/m<sup>3</sup> (1,500 lb/yd<sup>3</sup>)
- X Not Recommended

The above loads are in compliance with hydraulic excavator standard EN474-5:2006+A3:2013, they do not exceed 87% of hydraulic lifting capacity or 75% of tipping capacity with front linkage fully extended at ground line with bucket curled. Capacity based on ISO 7451.

Caterpillar recommends using appropriate work tools to maximize the value customers receive from our products. Use of work tools, including buckets, which are outside of Caterpillar's recommendations or specifications for weight, dimensions, flows, pressures, etc. may result in less-than-optimal performance, including but not limited to reductions in production, stability, reliability, and component durability. Improper use of a work tool resulting in sweeping, prying, twisting and/or catching of heavy loads will reduce the life of the boom and stick.

# M314 Wheeled Excavator Specifications

## Bucket Specifications and Compatibility – South Korea

Contact your Cat dealer for special bucket requirements.

	Linkage	Width		Capacity		Weight		Fill %	3100 kg (6,834 lb) Counterweight								
		Variable Adjustable Boom							2200 mm (7'3") Stick				2500 mm (8'2") Stick				
		Free on wheels	Rear dozer blade lowered	Front dozer and rear stabilizer lowered	Four stabilizers lowered	Free on wheels	Rear dozer blade lowered		Front dozer and rear stabilizer lowered	Four stabilizers lowered							
mm	in	m <sup>3</sup>	yd <sup>3</sup>	kg	lb												
<b>Pin-On (No Quick Coupler)</b>																	
General Duty (GD)	312	450	18	0.20	0.27	278	614	100	●	●	●	●	●	●	●	●	●
	312	600	24	0.31	0.40	317	699	100	●	●	●	●	●	●	●	●	●
	312	1000	39	0.60	0.78	439	969	100	⊙	●	●	●	⊖	⊙	●	●	
	312	1200	48	0.76	1.00	504	1,110	100	○	⊖	●	●	○	⊖	●	●	
Severe Duty (SD)	312	1050	42	0.65	0.85	554	1,221	90	⊖	⊙	●	●	⊖	⊙	●	●	
								kg	1468	1696	2826	3465	1396	1612	2679	3280	
								lb	3,237	3,740	6,230	7,638	3,077	3,554	5,906	7,230	
<b>With Cat Pin Grabber Coupler</b>																	
General Duty (GD)	312	450	18	0.20	0.27	278	614	100	●	●	●	●	●	●	●	●	
	312	600	24	0.31	0.40	317	699	100	●	●	●	●	●	●	●	●	
	312	1000	39	0.60	0.78	439	969	100	⊙	●	●	●	⊖	⊙	●	●	
	312	1200	48	0.76	1.00	504	1,110	100	○	⊖	●	●	○	⊖	●	●	
Severe Duty (SD)	312	1050	42	0.65	0.85	554	1,221	100	○	⊙	●	●	○	⊖	●	●	
								kg	1268	1497	2626	3265	1196	1412	2479	3080	
								lb	2,796	3,299	5,790	7,198	2,637	3,113	5,466	6,790	

**Maximum Material Density:**

- 2100 kg/m<sup>3</sup> (3,500 lb/yd<sup>3</sup>)
- ⊙ 1800 kg/m<sup>3</sup> (3,000 lb/yd<sup>3</sup>)
- ⊖ 1500 kg/m<sup>3</sup> (2,500 lb/yd<sup>3</sup>)
- 1200 kg/m<sup>3</sup> (2,000 lb/yd<sup>3</sup>)

The above loads are in compliance with hydraulic excavator standard EN474-5:2006+A3:2013, they do not exceed 87% of hydraulic lifting capacity or 75% of tipping capacity with front linkage fully extended at ground line with bucket curled. Capacity based on ISO 7451.

Caterpillar recommends using appropriate work tools to maximize the value customers receive from our products. Use of work tools, including buckets, which are outside of Caterpillar's recommendations or specifications for weight, dimensions, flows, pressures, etc. may result in less-than-optimal performance, including but not limited to reductions in production, stability, reliability, and component durability. Improper use of a work tool resulting in sweeping, prying, twisting and/or catching of heavy loads will reduce the life of the boom and stick.

# M314 Wheeled Excavator Specifications

## Attachments Offering Guide – North America

Not all attachments are available in all regions. Consult your Cat dealer for configurations available in your region.

Match       No Match       1800 kg/m<sup>3</sup> (3000 lb/yd<sup>3</sup>)       1200 kg/m<sup>3</sup> (2000 lb/yd<sup>3</sup>)

### PIN-ON ATTACHMENTS

Undercarriage		Rear Outrigger/Front Blade			Rear Blade/Front Outrigger		
Counterweight		3100 kg (6,834 lb)			3100 kg (6,834 lb)		
Boom Type		Variable Adjustable			Variable Adjustable		
Stick Length		2200 mm (7'3")	2500 mm (8'2")	2900 mm (9'6")	2200 mm (7'3")	2500 mm (8'2")	2900 mm (9'6")
Hammer	H110 GC	✓	✓		✓	✓	
	H110 GC S	✓	✓		✓	✓	
	H110 S	✓	✓		✓	✓	
	H115 GC	✓	✓		✓	✓	
	H115 GC S	✓	✓		✓	✓	
	H115 S	✓	✓		✓	✓	
Mobile Scrap and Demolition Shears	S3015	✓	✓		✓	✓	
Compactors (Vibratory Plate)	CVP75	✓	✓		✓	✓	
Mulchers	HM2615	✓	✓		✓	✓	
Orange Peel Grapples	GSH420-500	●	●	●	●	●	●
	GSH420-600	●	●	●	●	●	●
	GSH420-750	●	○	●	○	○	○
	GSH520-500	●	●	●	●	●	●
	GSH520-600	●	○	●	●	○	●
	GSH520-750	○	○	○	○	○	○

### PIN-ON ATTACHMENTS (continued)

Undercarriage		Rear Outrigger/Front Outrigger			Rear Blade		
Counterweight		3100 kg (6,834 lb)			3100 kg (6,834 lb)		
Boom Type		Variable Adjustable			Variable Adjustable		
Stick Length		2200 mm (7'3")	2500 mm (8'2")	2900 mm (9'6")	2200 mm (7'3")	2500 mm (8'2")	2900 mm (9'6")
Hammer	H110 GC	✓	✓		✓	✓	
	H110 GC S	✓	✓		✓	✓	
	H110 S	✓	✓		✓	✓	
	H115 GC	✓	✓		✓	✓	
	H115 GC S	✓	✓		✓	✓	
	H115 S	✓	✓		✓	✓	
Mobile Scrap and Demolition Shears	S3015	✓	✓		✓	✓	
Compactors (Vibratory Plate)	CVP75	✓	✓		✓	✓	
Mulchers	HM2615	✓	✓		✓	✓	
Orange Peel Grapples	GSH420-500	●	●	●			
	GSH420-600	●	●	●			
	GSH420-750	●	○	●			
	GSH520-500	●	●	●			
	GSH520-600	●	○	●			
	GSH520-750	○	○	○			

(continued on next page)

# M314 Wheeled Excavator Specifications

## Attachments Offering Guide – North America (continued)

Not all attachments are available in all regions. Consult your Cat dealer for configurations available in your region.

Match

Working range front only

No Match

### CAT PIN GRABBER COUPLER ATTACHMENTS

Undercarriage		Rear Outrigger/ Front Blade		Rear Blade/ Front Outrigger		Rear Outrigger/ Front Outrigger		Rear Blade	
		3100 kg (6,834 lb)	3100 kg (6,834 lb)	3100 kg (6,834 lb)	3100 kg (6,834 lb)	3100 kg (6,834 lb)	3100 kg (6,834 lb)	3100 kg (6,834 lb)	3100 kg (6,834 lb)
Counterweight		Variable Adjustable		Variable Adjustable		Variable Adjustable		Variable Adjustable	
Boom Type		Variable Adjustable		Variable Adjustable		Variable Adjustable		Variable Adjustable	
Stick Length		2200 mm	2500 mm	2200 mm	2500 mm	2200 mm	2500 mm	2200 mm	2500 mm
		(7'3")	(8'2")	(7'3")	(8'2")	(7'3")	(8'2")	(7'3")	(8'2")
Hydraulic Hammers	H110 GC	✓	✓	✓	✓	✓	✓	✓	✓
	H110 GC S	✓	✓	✓	✓	✓	✓	✓	✓
	H110 S	✓	✓	✓	✓	✓	✓	✓	✓
	H115 GC S	✓	✓	✓	✓	✓	✓	✓*	✓*
	H115 S	✓		✓		✓		✓	
Compactors (Vibratory Plate)	CVP75	✓	✓	✓	✓	✓	✓	✓	✓
Mulchers	HM2615	✓	✓	✓	✓	✓	✓	✓	✓*

\*Working range front only.

# M314 Wheeled Excavator Specifications

## Attachments Offering Guide – Europe

Not all attachments are available in all regions. Consult your Cat dealer for configurations available in your region.

Match    
  No Match    
  1800 kg/m<sup>3</sup> (3000 lb/yd<sup>3</sup>)    
  1200 kg/m<sup>3</sup> (2000 lb/yd<sup>3</sup>)    
  600 kg/m<sup>3</sup> (1000 lb/yd<sup>3</sup>)

### PIN-ON ATTACHMENTS

Undercarriage		Rear Outrigger/Front Blade			Rear Blade/Front Outrigger		
Counterweight		3100 kg (6,834 lb)			3100 kg (6,834 lb)		
Boom Type		Variable Adjustable			Variable Adjustable		
Stick Length		2200 mm (7'3")	2500 mm (8'2")	2900 mm (9'6")	2200 mm (7'3")	2500 mm (8'2")	2900 mm (9'6")
Hydraulic Hammers	H110 GC S	✓	✓		✓	✓	
	H110 S	✓	✓		✓	✓	
	H115 GC S	✓	✓		✓	✓	
	H115 S	✓	✓		✓	✓	
Demolition and Sorting Grapples	G310 GC	✓			✓		
Mobile Scrap and Demolition Shears	S3015	✓	✓		✓	✓	
Compactors (Vibratory Plate)	CVP75	✓	✓		✓	✓	
Orange Peel Grapples	GSH420-500	●	●	●	●	●	●
	GSH420-600	●	●	●	●	●	●
	GSH420-750	●	○	●	○	○	○
	GSH520-500	●	●	●	●	●	●
	GSH520-600	●	○	●	●	○	●
	GSH520-750	○	○	○	○	○	○
	GSV520 GC-400	●	●	●	●	●	●
	GSV520 GC-500	●	●	●	●	●	●
	GSV520 GC-600	●	●	●	●	●	●
	GSV520 GC-750	●	○	○	○	○	○
	GSV520 GC-1250	◇	◇	◇	◇	◇	◇
	GSV520-400	●	●	●	●	●	●
	GSV520-500	●	●	●	●	●	●
	GSV520-600	●	●	●	●	●	●
	GSV520-750	○	○	○	○	○	○
	GSV520-1250	◇	◇	◇	◇	◇	◇

(continued on next page)

# M314 Wheeled Excavator Specifications

## Attachments Offering Guide – Europe (continued)

Not all attachments are available in all regions. Consult your Cat dealer for configurations available in your region.

Match     
  No Match     
  1800 kg/m<sup>3</sup> (3000 lb/yd<sup>3</sup>)     
  1200 kg/m<sup>3</sup> (2000 lb/yd<sup>3</sup>)     
  600 kg/m<sup>3</sup> (1000 lb/yd<sup>3</sup>)

### PIN-ON ATTACHMENTS (continued)

Undercarriage		Rear Outrigger/Front Outrigger			Rear Blade		
Counterweight		3100 kg (6,834 lb)			3100 kg (6,834 lb)		
Boom Type		Variable Adjustable			Variable Adjustable		
Stick Length		2200 mm (7'3")	2500 mm (8'2")	2900 mm (9'6")	2200 mm (7'3")	2500 mm (8'2")	2900 mm (9'6")
Hydraulic Hammers	H110 GC S	✓	✓		✓	✓	
	H110 S	✓	✓		✓	✓	
	H115 GC S	✓	✓		✓	✓	
	H115 S	✓	✓		✓	✓	
Demolition and Sorting Grapples	G310 GC	✓			✓		
Mobile Scrap and Demolition Shears	S3015	✓	✓		✓	✓	
Compactors (Vibratory Plate)	CVP75	✓	✓		✓	✓	
Orange Peel Grapples	GSH420-500	●	●	●			
	GSH420-600	●	●	●			
	GSH420-750	●	○	●			
	GSH520-500	●	●	●			
	GSH520-600	●	○	●			
	GSH520-750	○	○	○			
	GSV520 GC-400	●	●	●	○		○
	GSV520 GC-500	●	●	●			
	GSV520 GC-600	●	●	●			
	GSV520 GC-750	●	○	○			
	GSV520 GC-1250	◇	◇	◇			
	GSV520-400	●	●	●			
	GSV520-500	●	●	●			
	GSV520-600	●	●	●			
	GSV520-750	●	○	○			
	GSV520-1250	◇	◇	◇			

(continued on next page)

# M314 Wheeled Excavator Specifications

## Attachments Offering Guide – Europe (continued)

Not all attachments are available in all regions. Consult your Cat dealer for configurations available in your region.

Match       Working range front only       No Match

### CAT PIN GRABBER COUPLER ATTACHMENTS

Undercarriage		Rear Outrigger/ Front Blade		Rear Blade/ Front Outrigger		Rear Outrigger/ Front Outrigger		Rear Blade	
		3100 kg (6,834 lb)	3100 kg (6,834 lb)	3100 kg (6,834 lb)	3100 kg (6,834 lb)	3100 kg (6,834 lb)	3100 kg (6,834 lb)	3100 kg (6,834 lb)	3100 kg (6,834 lb)
Counterweight		Variable Adjustable		Variable Adjustable		Variable Adjustable		Variable Adjustable	
Boom Type		2200 mm (7'3")	2500 mm (8'2")	2200 mm (7'3")	2500 mm (8'2")	2200 mm (7'3")	2500 mm (8'2")	2200 mm (7'3")	2500 mm (8'2")
Stick Length									
Hydraulic Hammers	H110 GC S	✓	✓	✓	✓	✓	✓	✓	✓
	H110 S	✓	✓	✓	✓	✓	✓	✓	✓
	H115 GC S	✓	✓	✓	✓	✓	✓	✓*	✓*
	H115 S	✓		✓		✓		✓	
Compactors (Vibratory Plate)	CVP75	✓	✓	✓	✓	✓	✓	✓	✓

\*Working range front only.

### CW-20S DEDICATED COUPLER ATTACHMENTS

Undercarriage		Rear Outrigger/ Front Blade		Rear Blade/ Front Outrigger		Rear Outrigger/ Front Outrigger		Rear Blade	
		3100 kg (6,834 lb)	3100 kg (6,834 lb)	3100 kg (6,834 lb)	3100 kg (6,834 lb)	3100 kg (6,834 lb)	3100 kg (6,834 lb)	3100 kg (6,834 lb)	3100 kg (6,834 lb)
Counterweight		Variable Adjustable		Variable Adjustable		Variable Adjustable		Variable Adjustable	
Boom Type		2200 mm (7'3")	2500 mm (8'2")	2200 mm (7'3")	2500 mm (8'2")	2200 mm (7'3")	2500 mm (8'2")	2200 mm (7'3")	2500 mm (8'2")
Stick Length									
Hydraulic Hammers	H110 GC S	✓	✓	✓	✓	✓	✓	✓	✓
	H110 S	✓	✓	✓	✓	✓	✓	✓	✓
	H115 S	✓	✓	✓	✓	✓	✓	✓	✓
Demolition and Sorting Grapples	G310 GC	✓	✓	✓	✓	✓	✓	✓	✓*
	G314	✓		✓		✓			
	G313 GC	✓	✓	✓	✓	✓	✓		
Compactors (Vibratory Plate)	CVP75	✓	✓	✓	✓	✓	✓	✓	✓

\*Working range front only.

(continued on next page)

# M314 Wheeled Excavator Specifications

## Attachments Offering Guide – Europe (continued)

Not all attachments are available in all regions. Consult your Cat dealer for configurations available in your region.

Match

Working range front only

No Match

### CW-20 DEDICATED COUPLER ATTACHMENTS

Undercarriage		Rear Outrigger/ Front Blade		Rear Blade/ Front Outrigger		Rear Outrigger/ Front Outrigger		Rear Blade	
		3100 kg (6,834 lb)	3100 kg (6,834 lb)	3100 kg (6,834 lb)	3100 kg (6,834 lb)	3100 kg (6,834 lb)	3100 kg (6,834 lb)	3100 kg (6,834 lb)	3100 kg (6,834 lb)
Counterweight		Variable Adjustable		Variable Adjustable		Variable Adjustable		Variable Adjustable	
Boom Type		2200 mm (7'3")	2500 mm (8'2")	2200 mm (7'3")	2500 mm (8'2")	2200 mm (7'3")	2500 mm (8'2")	2200 mm (7'3")	2500 mm (8'2")
Stick Length									
Hydraulic Hammers	H110 GC S	✓	✓	✓	✓	✓	✓	✓	✓
	H110 S	✓	✓	✓	✓	✓	✓	✓	✓
	H115 S	✓	✓	✓	✓	✓	✓	✓	✓
Demolition and Sorting Grapples	G310 GC	✓	✓	✓	✓	✓	✓	✓*	✓*
	G314	✓		✓		✓			
	G313 GC	✓	✓	✓	✓	✓	✓		
Compactors (Vibratory Plate)	CVP75	✓	✓	✓	✓	✓	✓	✓	✓

\*Working range front only.

### S60 DEDICATED COUPLER ATTACHMENTS

Undercarriage		Rear Outrigger/ Front Blade		Rear Blade/ Front Outrigger		Rear Outrigger/ Front Outrigger		Rear Blade	
		3100 kg (6,834 lb)	3100 kg (6,834 lb)	3100 kg (6,834 lb)	3100 kg (6,834 lb)	3100 kg (6,834 lb)	3100 kg (6,834 lb)	3100 kg (6,834 lb)	3100 kg (6,834 lb)
Counterweight		Variable Adjustable		Variable Adjustable		Variable Adjustable		Variable Adjustable	
Boom Type		2200 mm (7'3")	2500 mm (8'2")	2200 mm (7'3")	2500 mm (8'2")	2200 mm (7'3")	2500 mm (8'2")	2200 mm (7'3")	2500 mm (8'2")
Stick Length									
Hydraulic Hammers	H110 S	✓	✓	✓	✓	✓	✓	✓	✓
	H115 S	✓	✓	✓	✓	✓	✓	✓	✓
Demolition and Sorting Grapples	G310 GC	✓	✓	✓	✓	✓	✓	✓	✓*
	G313 GC	✓		✓		✓			
Compactors (Vibratory Plate)	CVP75	✓	✓	✓	✓	✓	✓	✓	✓

\*Working range front only.

(continued on next page)

# M314 Wheeled Excavator Specifications

## Attachments Offering Guide – Europe (continued)

Not all attachments are available in all regions. Consult your Cat dealer for configurations available in your region.

Match

Working range front only

No Match

### TRS10 WITH CW-20 ATTACHMENTS

Undercarriage		Rear Outrigger/Front Blade	Rear Blade/Front Outrigger	Rear Outrigger/ Front Outrigger
Counterweight		3100 kg (6,834 lb)	3100 kg (6,834 lb)	3100 kg (6,834 lb)
Boom Type		Variable Adjustable	Variable Adjustable	Variable Adjustable
Stick Length		2200 mm (7'3")	2200 mm (7'3")	2200 mm (7'3")
Compactors (Vibratory Plate)	CVP75	✓	✓	✓

### TRS10 WITH S60 ATTACHMENTS

Undercarriage		Rear Outrigger/ Front Blade		Rear Blade/ Front Outrigger		Rear Outrigger/ Front Outrigger		Rear Blade	
Counterweight		3100 kg (6,834 lb)		3100 kg (6,834 lb)		3100 kg (6,834 lb)		3100 kg (6,834 lb)	
Boom Type		Variable Adjustable		Variable Adjustable		Variable Adjustable		Variable Adjustable	
Stick Length		2200 mm (7'3")	2500 mm (8'2")	2200 mm (7'3")	2500 mm (8'2")	2200 mm (7'3")	2500 mm (8'2")	2200 mm (7'3")	2500 mm (8'2")
Hydraulic Hammers	H110 S	✓	✓	✓	✓	✓	✓	✓	✓*
Demolition and Sorting Grapples	G210 GC	✓	✓	✓	✓	✓	✓	✓*	
Compactors (Vibratory Plate)	CVP75	✓	✓	✓	✓	✓	✓	✓	✓

\*Working range front only.

# M314 Wheeled Excavator Specifications

## Attachments Offering Guide – Australia and New Zealand

Not all attachments are available in all regions. Consult your Cat dealer for configurations available in your region.

Match

Working range front only

No Match

### PIN-ON ATTACHMENTS

Undercarriage		Rear Outrigger/ Front Blade		Rear Blade/ Front Outrigger		Rear Outrigger/ Front Outrigger		Rear Blade	
		3100 kg (6,834 lb)		3100 kg (6,834 lb)		3100 kg (6,834 lb)		3100 kg (6,834 lb)	
Counterweight		Variable Adjustable		Variable Adjustable		Variable Adjustable		Variable Adjustable	
Boom Type		2200 mm (7'3")		2500 mm (8'2")		2200 mm (7'3")		2500 mm (8'2")	
Stick Length		2200 mm (7'3")		2500 mm (8'2")		2200 mm (7'3")		2500 mm (8'2")	
Hydraulic Hammers	H110 GC	✓	✓	✓	✓	✓	✓	✓	✓
	H110 GC S	✓	✓	✓	✓	✓	✓	✓	✓
	H110 S	✓	✓	✓	✓	✓	✓	✓	✓
	H115 GC	✓	✓	✓	✓	✓	✓	✓	✓
	H115 GC S	✓	✓	✓	✓	✓	✓	✓	✓
	H115 S	✓	✓	✓	✓	✓	✓	✓	✓
Mobile Scrap and Demolition Shears	S3015	✓	✓	✓	✓	✓	✓	✓	✓
Cat Pin Grabber Couplers		✓	✓	✓	✓	✓	✓	✓	✓

### CAT PIN GRABBER COUPLER ATTACHMENTS

Undercarriage		Rear Outrigger/ Front Blade		Rear Blade/ Front Outrigger		Rear Outrigger/ Front Outrigger		Rear Blade	
		3100 kg (6,834 lb)		3100 kg (6,834 lb)		3100 kg (6,834 lb)		3100 kg (6,834 lb)	
Counterweight		Variable Adjustable		Variable Adjustable		Variable Adjustable		Variable Adjustable	
Boom Type		2200 mm (7'3")		2500 mm (8'2")		2200 mm (7'3")		2500 mm (8'2")	
Stick Length		2200 mm (7'3")		2500 mm (8'2")		2200 mm (7'3")		2500 mm (8'2")	
Hydraulic Hammers	H110 GC	✓	✓	✓	✓	✓	✓	✓	✓
	H110 GC S	✓	✓	✓	✓	✓	✓	✓	✓
	H110 S	✓	✓	✓	✓	✓	✓	✓	✓
	H115 GC S	✓	✓	✓	✓	✓	✓	✓*	✓*
	H115 S	✓		✓		✓		✓	

\*Working range front only.

# M314 Wheeled Excavator Specifications

## Attachments Offering Guide – South Korea

Not all attachments are available in all regions. Consult your Cat dealer for configurations available in your region.

Match

### PIN-ON ATTACHMENTS

Undercarriage	Rear Outrigger/ Front Blade		Rear Blade/ Front Outrigger		Rear Outrigger/ Front Outrigger		Rear Blade	
	3100 kg (6,834 lb)		3100 kg (6,834 lb)		3100 kg (6,834 lb)		3100 kg (6,834 lb)	
Counterweight	Variable Adjustable		Variable Adjustable		Variable Adjustable		Variable Adjustable	
Boom Type	2200 mm (7'3")	2500 mm (8'2")	2200 mm (7'3")	2500 mm (8'2")	2200 mm (7'3")	2500 mm (8'2")	2200 mm (7'3")	2500 mm (8'2")
Stick Length								
Hydraulic Hammers	H110 GC	✓	✓	✓	✓	✓	✓	✓
	H110 GC S	✓	✓	✓	✓	✓	✓	✓
	H115 GC	✓	✓	✓	✓	✓	✓	✓
	H115 GC S	✓	✓	✓	✓	✓	✓	✓

# M314 Wheeled Excavator Specifications

## Lift Capacities – Variable Adjustable Boom (5028 mm), 2200 mm Stick

All values are in kg, work tool: none, bucket cylinder and bucket linkage installed, counterweight: 3100 kg, heavy lift function on.

Stick height	Undercarriage configuration	3000 mm			4500 mm			6000 mm			Load point height			
		Load at maximum reach (sticknose/bucket pin)	Load over front	Load over rear	Load over side	Load at maximum reach (sticknose/bucket pin)	Load over front	Load over rear	Load over side	Load at maximum reach (sticknose/bucket pin)	Load over front	Load over rear	mm	
7500 mm	Undercarriage: front empty – rear dozer – free on wheels				*3800	*3800	3650				*3700	*3700	3600	4510
	Undercarriage: front empty – rear dozer – stabilized				*3800	*3800	*3800				*3700	*3700	*3700	
	Undercarriage: front dozer – rear stabilizer – stabilized				*3800	*3800	*3800				*3700	*3700	*3700	
	Undercarriage: front stabilizer – rear stabilizer – stabilized				*3800	*3800	*3800				*3700	*3700	*3700	
6000 mm	Undercarriage: front empty – rear dozer – free on wheels				*4750	4100	3750	*3300	2500	2250	*3100	2450	2250	6040
	Undercarriage: front empty – rear dozer – stabilized				*4750	*4750	4150	*3300	*3300	2550	*3100	*3100	2500	
	Undercarriage: front dozer – rear stabilizer – stabilized				*4750	*4750	*4750	*3300	*3300	*3300	*3100	*3100	*3100	
	Undercarriage: front stabilizer – rear stabilizer – stabilized				*4750	*4750	*4750	*3300	*3300	*3300	*3100	*3100	*3100	
4500 mm	Undercarriage: front empty – rear dozer – free on wheels				*5200	3950	3550	3600	2500	2250	2850	1950	1750	6890
	Undercarriage: front empty – rear dozer – stabilized				*5200	*5200	4000	3600	*4300	2550	2850	*2850	2000	
	Undercarriage: front dozer – rear stabilizer – stabilized				*5200	*5200	*5200	*4300	*4300	3900	*2850	*2850	*2850	
	Undercarriage: front stabilizer – rear stabilizer – stabilized				*5200	*5200	*5200	*4300	*4300	*4300	*2850	*2850	*2850	
3000 mm	Undercarriage: front empty – rear dozer – free on wheels				5400	3600	3250	3500	2350	2150	2550	1700	1550	7340
	Undercarriage: front empty – rear dozer – stabilized				5400	*6000	3700	3500	*4550	2400	2550	*2850	1750	
	Undercarriage: front dozer – rear stabilizer – stabilized				*6000	*6000	5850	*4550	*4550	3750	*2850	*2850	2750	
	Undercarriage: front stabilizer – rear stabilizer – stabilized				*6000	*6000	*6000	*4550	*4550	4550	*2850	*2850	*2850	
1500 mm	Undercarriage: front empty – rear dozer – free on wheels				5100	3350	3000	3350	2250	2000	2450	1650	1450	7450
	Undercarriage: front empty – rear dozer – stabilized				5100	*6550	3400	3350	*4750	2300	2450	*3000	1650	
	Undercarriage: front dozer – rear stabilizer – stabilized				*6550	*6550	5550	*4750	*4750	3650	*3000	*3000	2650	
	Undercarriage: front stabilizer – rear stabilizer – stabilized				*6550	*6550	*6550	*4750	*4750	4400	*3000	*3000	*3000	
0 mm	Undercarriage: front empty – rear dozer – free on wheels				4950	3200	2850	3250	2150	1950	2550	1650	1500	7230
	Undercarriage: front empty – rear dozer – stabilized				4950	*6350	3250	3250	*4650	2200	2500	*3300	1700	
	Undercarriage: front dozer – rear stabilizer – stabilized				*6350	*6350	5400	*4650	*4650	3550	*3300	*3300	2750	
	Undercarriage: front stabilizer – rear stabilizer – stabilized				*6350	*6350	*6350	*4650	*4650	4300	*3300	*3300	*3300	
-1500 mm	Undercarriage: front empty – rear dozer – free on wheels	*6850	5950	5200	4950	3150	2850	3250	2150	1950	2850	1900	1700	6670
	Undercarriage: front empty – rear dozer – stabilized	*6850	*6850	6050	4900	*5500	3250	3250	*3950	2200	2800	*3150	1900	
	Undercarriage: front dozer – rear stabilizer – stabilized	*6850	*6850	*6850	*5500	*5500	5350	*3950	*3950	3550	*3150	*3150	3050	
	Undercarriage: front stabilizer – rear stabilizer – stabilized	*6850	*6850	*6850	*5500	*5500	*5500	*3950	*3950	*3950	*3150	*3150	*3150	

\*Limited by hydraulic rather than tipping load.






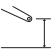
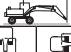












Oscillating axle needs to be locked. Weight of all lifting accessories must be subtracted from the lifting capacities. All lift capacities calculated and rated per ISO 10567:2007. Rated loads do not exceed 87% of hydraulic lift capacity or 75% of tipping load. Heavy Lift Function ON. Lifting capacities are based on the machine standing on a firm uniform supporting surface. The load point is the center line of the bucket pivot mounting pin on the stick. Lift capacity is calculated with VA cylinder completely extracted. The use of a work tool attachment point to handle/lift objects, could affect the machine lift performance.

Always refer to the appropriate Operation and Maintenance Manual for specific product information.

# M314 Wheeled Excavator Specifications

## Lift Capacities – Variable Adjustable Boom (16'6"), 7'3" Stick

All values are in lb, work tool: none, bucket cylinder and bucket linkage installed, counterweight: 6,834 lb, heavy lift function on.

		 Load at maximum reach (sticknose/bucket pin)	 Load over front	 Load over rear	 Load over side	 Load point height								
	Undercarriage configuration	10 ft			15 ft			20 ft						
														ft
25 ft	Undercarriage: front empty – rear dozer – free on wheels										*8,400	*8,400	*8,400	14.24
	Undercarriage: front empty – rear dozer – stabilized										*8,400	*8,400	*8,400	
	Undercarriage: front dozer – rear stabilizer – stabilized										*8,400	*8,400	*8,400	
	Undercarriage: front stabilizer – rear stabilizer – stabilized										*8,400	*8,400	*8,400	
20 ft	Undercarriage: front empty – rear dozer – free on wheels				*10,400	8,800	8,000				*6,800	*5,600	5,100	19.55
	Undercarriage: front empty – rear dozer – stabilized				*10,400	*10,400	9,000				*6,800	*6,800	5,700	
	Undercarriage: front dozer – rear stabilizer – stabilized				*10,400	*10,400	*10,400				*6,800	*6,800	*6,800	
	Undercarriage: front stabilizer – rear stabilizer – stabilized				*10,400	*10,400	*10,400				*6,800	*6,800	*6,800	
15 ft	Undercarriage: front empty – rear dozer – free on wheels				*11,300	8,500	7,700	7,800	5,300	4,900	*6,300	4,300	3,900	22.51
	Undercarriage: front empty – rear dozer – stabilized				*11,300	*11,300	8,600	7,800	*9,400	5,400	*6,300	*6,300	4,400	
	Undercarriage: front dozer – rear stabilizer – stabilized				*11,300	*11,300	*11,300	*9,400	*9,400	8,400	*6,300	*6,300	*6,300	
	Undercarriage: front stabilizer – rear stabilizer – stabilized				*11,300	*11,300	*11,300	*9,400	*9,400	*9,400	*6,300	*6,300	*6,300	
10 ft	Undercarriage: front empty – rear dozer – free on wheels				11,700	7,800	7,100	7,500	5,100	4,600	5,600	3,800	3,400	24.05
	Undercarriage: front empty – rear dozer – stabilized				11,600	*13,000	8,000	7,500	*9,900	5,200	5,600	*6,300	3,900	
	Undercarriage: front dozer – rear stabilizer – stabilized				*13,000	*13,000	12,700	*9,900	*9,900	8,100	*6,300	*6,300	6,100	
	Undercarriage: front stabilizer – rear stabilizer – stabilized				*13,000	*13,000	*13,000	*9,900	*9,900	9,800	*6,300	*6,300	*6,300	
5 ft	Undercarriage: front empty – rear dozer – free on wheels				11,000	7,200	6,500	7,200	4,800	4,400	5,400	3,600	3,200	24.44
	Undercarriage: front empty – rear dozer – stabilized				11,000	*14,100	7,300	7,200	*10,300	4,900	5,400	*6,600	3,700	
	Undercarriage: front dozer – rear stabilizer – stabilized				*14,100	*14,100	12,000	*10,300	*10,300	7,800	*6,600	*6,600	5,800	
	Undercarriage: front stabilizer – rear stabilizer – stabilized				*14,100	*14,100	*14,100	*10,300	*10,300	9,500	*6,600	*6,600	*6,600	
0 ft	Undercarriage: front empty – rear dozer – free on wheels				10,700	6,900	6,100	7,000	4,600	4,200	5,600	3,700	3,300	23.72
	Undercarriage: front empty – rear dozer – stabilized				10,600	*13,800	7,000	7,000	*10,000	4,800	5,500	*7,300	3,800	
	Undercarriage: front dozer – rear stabilizer – stabilized				*13,800	*13,800	11,600	*10,000	*10,000	7,600	*7,300	*7,300	6,000	
	Undercarriage: front stabilizer – rear stabilizer – stabilized				*13,800	*13,800	*13,800	*10,000	*10,000	9,300	*7,300	*7,300	*7,300	
-5 ft	Undercarriage: front empty – rear dozer – free on wheels	*15,400	12,800	11,200	10,600	6,800	6,100	7,000	4,600	4,200	6,300	4,200	3,700	21.85
	Undercarriage: front empty – rear dozer – stabilized	*15,400	*15,400	13,000	10,600	*11,900	7,000	7,000	*8,500	4,700	6,200	*6,900	4,300	
	Undercarriage: front dozer – rear stabilizer – stabilized	*15,400	*15,400	*15,400	*11,900	*11,900	11,600	*8,500	*8,500	7,600	*6,900	*6,900	6,800	
	Undercarriage: front stabilizer – rear stabilizer – stabilized	*15,400	*15,400	*15,400	*11,900	*11,900	*11,900	*8,500	*8,500	*8,500	*6,900	*6,900	*6,900	

\*Limited by hydraulic rather than tipping load.

Oscillating axle needs to be locked. Weight of all lifting accessories must be subtracted from the lifting capacities. All lift capacities calculated and rated per ISO 10567:2007. Rated loads do not exceed 87% of hydraulic lift capacity or 75% of tipping load. Heavy Lift Function ON. Lifting capacities are based on the machine standing on a firm uniform supporting surface. The load point is the center line of the bucket pivot mounting pin on the stick. Lift capacity is calculated with VA cylinder completely extracted. The use of a work tool attachment point to handle/lift objects, could affect the machine lift performance.

Always refer to the appropriate Operation and Maintenance Manual for specific product information.

# M314 Wheeled Excavator Specifications

## Lift Capacities – Variable Adjustable Boom (5028 mm), 2500 mm Stick

All values are in kg, work tool: none, bucket cylinder and bucket linkage installed, counterweight: 3100 kg, heavy lift function on.

Stick height	Undercarriage configuration	Load at maximum reach (sticknose/bucket pin)			Load over front			Load over rear			Load over side			Load point height			mm
		3000 mm	4500 mm	6000 mm	7500 mm	3000 mm	4500 mm	6000 mm	7500 mm	3000 mm	4500 mm	6000 mm	7500 mm	3000 mm	4500 mm	6000 mm	
7500 mm	Undercarriage: front empty – rear dozer – free on wheels				*4100	*4100	3750							*3100	*3100	*3100	4990
	Undercarriage: front empty – rear dozer – stabilized				*4100	*4100	*4100							*3100	*3100	*3100	
	Undercarriage: front dozer – rear stabilizer – stabilized				*4100	*4100	*4100							*3100	*3100	*3100	
	Undercarriage: front stabilizer – rear stabilizer – stabilized				*4100	*4100	*4100							*3100	*3100	*3100	
6000 mm	Undercarriage: front empty – rear dozer – free on wheels				*4150	*4150	3800	*3700	2550	2350				*2650	2300	2100	6390
	Undercarriage: front empty – rear dozer – stabilized				*4150	*4150	*4150	3700	*3700	2600				*2650	*2650	2300	
	Undercarriage: front dozer – rear stabilizer – stabilized				*4150	*4150	*4150	*3700	*3700	*3700				*2650	*2650	*2650	
	Undercarriage: front stabilizer – rear stabilizer – stabilized				*4150	*4150	*4150	*3700	*3700	*3700				*2650	*2650	*2650	
4500 mm	Undercarriage: front empty – rear dozer – free on wheels				*4750	4000	3650	3650	2550	2300				*2500	1850	1650	7200
	Undercarriage: front empty – rear dozer – stabilized				*4750	*4750	4050	3650	*4200	2600				*2500	*2500	1850	
	Undercarriage: front dozer – rear stabilizer – stabilized				*4750	*4750	*4750	*4200	*4200	3950				*2500	*2500	*2500	
	Undercarriage: front stabilizer – rear stabilizer – stabilized				*4750	*4750	*4750	*4200	*4200	*4200				*2500	*2500	*2500	
3000 mm	Undercarriage: front empty – rear dozer – free on wheels				5500	3700	3350	3550	2400	2200	2500	1700	1500	2450	1650	1500	7630
	Undercarriage: front empty – rear dozer – stabilized				5500	*5850	3750	3500	*4500	2450	2500	*3200	1700	2400	*2450	1650	
	Undercarriage: front dozer – rear stabilizer – stabilized				*5850	*5850	*5850	*4500	*4500	3800	*3200	*3200	2700	*2450	*2450	*2450	
	Undercarriage: front stabilizer – rear stabilizer – stabilized				*5850	*5850	*5850	*4500	*4500	*4500	*3200	*3200	*3200	*2450	*2450	*2450	
1500 mm	Undercarriage: front empty – rear dozer – free on wheels				5150	3400	3050	3400	2250	2050	2450	1650	1500	2350	1550	1400	7730
	Undercarriage: front empty – rear dozer – stabilized				5150	*6500	3450	3400	*4750	2300	2450	*3700	1650	2300	*2550	1600	
	Undercarriage: front dozer – rear stabilizer – stabilized				*6500	*6500	5600	*4750	*4750	3650	*3700	*3700	2650	*2550	*2550	2500	
	Undercarriage: front stabilizer – rear stabilizer – stabilized				*6500	*6500	*6500	*4750	*4750	4450	*3700	*3700	3200	*2550	*2550	*2550	
0 mm	Undercarriage: front empty – rear dozer – free on wheels				5000	3250	2900	3300	2150	1950	2400	1600	1450	2400	1600	1450	7530
	Undercarriage: front empty – rear dozer – stabilized				4950	*6500	3300	3300	*4700	2250	2400	*3100	1650	2400	*2850	1650	
	Undercarriage: front dozer – rear stabilizer – stabilized				*6500	*6500	5450	*4700	*4700	3550	*3100	*3100	2600	*2850	*2850	2600	
	Undercarriage: front stabilizer – rear stabilizer – stabilized				*6500	*6500	*6500	*4700	*4700	4350	*3100	*3100	*3100	*2850	*2850	*2850	
-1500 mm	Undercarriage: front empty – rear dozer – free on wheels	*6450	5950	5200	4950	3200	2850	3250	2150	1950				2650	1750	1600	6990
	Undercarriage: front empty – rear dozer – stabilized	*6450	*6450	6050	4900	*5750	3250	3250	*4200	2200				2650	*3100	1800	
	Undercarriage: front dozer – rear stabilizer – stabilized	*6450	*6450	*6450	*5750	*5750	5400	*4200	*4200	3550				*3100	*3100	2900	
	Undercarriage: front stabilizer – rear stabilizer – stabilized	*6450	*6450	*6450	*5750	*5750	*5750	*4200	*4200	*4200				*3100	*3100	*3100	
-3000 mm	Undercarriage: front empty – rear dozer – free on wheels				*4200	3250	2900										
	Undercarriage: front empty – rear dozer – stabilized				*4200	*4200	3300										
	Undercarriage: front dozer – rear stabilizer – stabilized				*4200	*4200	*4200										
	Undercarriage: front stabilizer – rear stabilizer – stabilized				*4200	*4200	*4200										

\*Limited by hydraulic rather than tipping load.

Oscillating axle needs to be locked. Weight of all lifting accessories must be subtracted from the lifting capacities. All lift capacities calculated and rated per ISO 10567:2007. Rated loads do not exceed 87% of hydraulic lift capacity or 75% of tipping load. Heavy Lift Function ON. Lifting capacities are based on the machine standing on a firm uniform supporting surface. The load point is the center line of the bucket pivot mounting pin on the stick. Lift capacity is calculated with VA cylinder completely extracted. The use of a work tool attachment point to handle/lift objects, could affect the machine lift performance.

Always refer to the appropriate Operation and Maintenance Manual for specific product information.

# M314 Wheeled Excavator Specifications

## Lift Capacities – Variable Adjustable Boom (16'6"), 8'2" Stick

All values are in lb, work tool: none, bucket cylinder and bucket linkage installed, counterweight: 6,834 lb, heavy lift function on.

		Load at maximum reach (sticknose/bucket pin)			Load over front			Load over rear			Load over side			Load point height						
	Undercarriage configuration	10 ft			15 ft			20 ft			25 ft									
																	ft			
25 ft	Undercarriage: front empty – rear dozer – free on wheels				*8,500	*8,500	8,000										*7,000	*7,000	*7,000	15.85
	Undercarriage: front empty – rear dozer – stabilized				*8,500	*8,500	*8,500										*7,000	*7,000	*7,000	
	Undercarriage: front dozer – rear stabilizer – stabilized				*8,500	*8,500	*8,500										*7,000	*7,000	*7,000	
	Undercarriage: front stabilizer – rear stabilizer – stabilized				*8,500	*8,500	*8,500										*7,000	*7,000	*7,000	
20 ft	Undercarriage: front empty – rear dozer – free on wheels				*9,200	9,000	8,200	*7,500	5,500	5,000							*5,900	5,100	4,700	20.73
	Undercarriage: front empty – rear dozer – stabilized				*9,200	*9,200	9,100	*7,500	*7,500	5,600							*5,900	*5,900	5,200	
	Undercarriage: front dozer – rear stabilizer – stabilized				*9,200	*9,200	*9,200	*7,500	*7,500	*7,500							*5,900	*5,900	*5,900	
	Undercarriage: front stabilizer – rear stabilizer – stabilized				*9,200	*9,200	*9,200	*7,500	*7,500	*7,500							*5,900	*5,900	*5,900	
15 ft	Undercarriage: front empty – rear dozer – free on wheels				*10,400	8,600	7,800	7,900	5,400	5,000							*5,500	4,100	3,700	23.52
	Undercarriage: front empty – rear dozer – stabilized				*10,400	*10,400	8,800	7,900	*9,100	5,500							*5,500	*5,500	4,200	
	Undercarriage: front dozer – rear stabilizer – stabilized				*10,400	*10,400	*10,400	*9,100	*9,100	8,500							*5,500	*5,500	*5,500	
	Undercarriage: front stabilizer – rear stabilizer – stabilized				*10,400	*10,400	*10,400	*9,100	*9,100	*9,100							*5,500	*5,500	*5,500	
10 ft	Undercarriage: front empty – rear dozer – free on wheels				11,900	8,000	7,200	7,600	5,200	4,700	5,400	3,600	3,300	5,400	3,600	3,300	5,400	3,600	3,300	25.00
	Undercarriage: front empty – rear dozer – stabilized				11,800	*12,600	8,100	7,600	*9,700	5,300	5,300	*5,400	3,700	5,300	*5,400	3,700	5,300	*5,400	3,700	
	Undercarriage: front dozer – rear stabilizer – stabilized				*12,600	*12,600	*12,600	*9,700	*9,700	8,200	*5,400	*5,400	*5,400	*5,400	*5,400	*5,400	*5,400	*5,400	*5,400	
	Undercarriage: front stabilizer – rear stabilizer – stabilized				*12,600	*12,600	*12,600	*9,700	*9,700	*9,700	*5,400	*5,400	*5,400	*5,400	*5,400	*5,400	*5,400	*5,400	*5,400	
5 ft	Undercarriage: front empty – rear dozer – free on wheels				11,100	7,300	6,600	7,300	4,900	4,400	5,300	3,500	3,200	5,100	3,400	3,100	5,100	3,400	3,100	25.36
	Undercarriage: front empty – rear dozer – stabilized				11,100	*14,000	7,500	7,300	*10,300	5,000	5,200	*7,300	3,600	5,100	*5,700	3,500	5,100	*5,700	3,500	
	Undercarriage: front dozer – rear stabilizer – stabilized				*14,000	*14,000	12,100	*10,300	*10,300	7,900	*7,300	*7,300	5,700	*5,700	*5,700	5,600	*5,700	*5,700	5,600	
	Undercarriage: front stabilizer – rear stabilizer – stabilized				*14,000	*14,000	*14,000	*10,300	*10,300	9,600	*7,300	*7,300	6,900	*5,700	*5,700	*5,700	*5,700	*5,700	*5,700	
0 ft	Undercarriage: front empty – rear dozer – free on wheels				10,700	7,000	6,200	7,100	4,700	4,200				5,300	3,500	3,200	5,300	3,500	3,200	24.70
	Undercarriage: front empty – rear dozer – stabilized				10,700	*14,000	7,100	7,100	*10,200	4,800				5,300	*6,200	3,600	5,300	*6,200	3,600	
	Undercarriage: front dozer – rear stabilizer – stabilized				*14,000	*14,000	11,700	*10,200	*10,200	7,700				*6,200	*6,200	5,700	*6,200	*6,200	5,700	
	Undercarriage: front stabilizer – rear stabilizer – stabilized				*14,000	*14,000	*14,000	*10,200	*10,200	9,300				*6,200	*6,200	*6,200	*6,200	*6,200	*6,200	
-5 ft	Undercarriage: front empty – rear dozer – free on wheels	*14,800	12,800	11,100	10,600	6,900	6,100	7,000	4,600	4,200				5,900	3,900	3,500	5,900	3,900	3,500	22.90
	Undercarriage: front empty – rear dozer – stabilized	*14,800	*14,800	13,000	10,600	*12,500	7,000	7,000	*9,000	4,700				5,900	*6,800	4,000	5,900	*6,800	4,000	
	Undercarriage: front dozer – rear stabilizer – stabilized	*14,800	*14,800	*14,800	*12,500	*12,500	11,600	*9,000	*9,000	7,600				*6,800	*6,800	6,400	*6,800	*6,800	6,400	
	Undercarriage: front stabilizer – rear stabilizer – stabilized	*14,800	*14,800	*14,800	*12,500	*12,500	*12,500	*9,000	*9,000	*9,000				*6,800	*6,800	*6,800	*6,800	*6,800	*6,800	
-10 ft	Undercarriage: front empty – rear dozer – free on wheels				*9,000	7,000	6,300													
	Undercarriage: front empty – rear dozer – stabilized				*9,000	*9,000	7,200													
	Undercarriage: front dozer – rear stabilizer – stabilized				*9,000	*9,000	*9,000													
	Undercarriage: front stabilizer – rear stabilizer – stabilized				*9,000	*9,000	*9,000													

\*Limited by hydraulic rather than tipping load.

Oscillating axle needs to be locked. Weight of all lifting accessories must be subtracted from the lifting capacities. All lift capacities calculated and rated per ISO 10567:2007. Rated loads do not exceed 87% of hydraulic lift capacity or 75% of tipping load. Heavy Lift Function ON. Lifting capacities are based on the machine standing on a firm uniform supporting surface. The load point is the center line of the bucket pivot mounting pin on the stick. Lift capacity is calculated with VA cylinder completely extracted. The use of a work tool attachment point to handle/lift objects, could affect the machine lift performance.

Always refer to the appropriate Operation and Maintenance Manual for specific product information.

# M314 Wheeled Excavator Specifications

## Lift Capacities – Variable Adjustable Boom (5028 mm), 2900 mm Industrial Stick

All values are in kg, work tool: none, bucket cylinder and bucket linkage installed, counterweight: 3100 kg, heavy lift function on.

Stick height	Undercarriage configuration	Load at maximum reach (sticknose/bucket pin)			Load over front			Load over rear			Load over side			Load point height		
		3000 mm	4500 mm	6000 mm	7500 mm	3000 mm	4500 mm	6000 mm	7500 mm	3000 mm	4500 mm	6000 mm	7500 mm	3000 mm	4500 mm	6000 mm
7500 mm	Undercarriage: front empty – rear dozer – free on wheels				*4200	*4200	4050							*3500	3400	3100
	Undercarriage: front empty – rear dozer – stabilized				*4200	*4200	*4200							*3500	*3500	3450
	Undercarriage: front dozer – rear stabilizer – stabilized				*4200	*4200	*4200							*3500	*3500	*3500
	Undercarriage: front stabilizer – rear stabilizer – stabilized				*4200	*4200	*4200							*3500	*3500	*3500
6000 mm	Undercarriage: front empty – rear dozer – free on wheels				*4150	*4150	4050	3950	2800	2600				*3150	2400	2200
	Undercarriage: front empty – rear dozer – stabilized				*4150	*4150	*4150	3950	*4000	2850				*3150	*3150	2450
	Undercarriage: front dozer – rear stabilizer – stabilized				*4150	*4150	*4150	*4000	*4000	*4000				*3150	*3150	*3150
	Undercarriage: front stabilizer – rear stabilizer – stabilized				*4150	*4150	*4150	*4000	*4000	*4000				*3150	*3150	*3150
4500 mm	Undercarriage: front empty – rear dozer – free on wheels				*4600	4250	3900	3900	2750	2550				2800	1950	1800
	Undercarriage: front empty – rear dozer – stabilized				*4600	*4600	4350	3900	*4250	2800				2800	*3100	2000
	Undercarriage: front dozer – rear stabilizer – stabilized				*4600	*4600	*4600	*4250	*4250	4200				*3100	*3100	3000
	Undercarriage: front stabilizer – rear stabilizer – stabilized				*4600	*4600	*4600	*4250	*4250	*4250				*3100	*3100	*3100
3000 mm	Undercarriage: front empty – rear dozer – free on wheels				5800	4000	3600	3750	2650	2400	2700	1900	1750	2550	1800	1650
	Undercarriage: front empty – rear dozer – stabilized				5750	*5800	4050	3750	*4600	2700	2700	*3800	1950	2550	*3200	1800
	Undercarriage: front dozer – rear stabilizer – stabilized				*5800	*5800	*5800	*4600	*4600	4050	*3800	*3800	2900	*3200	*3200	2750
	Undercarriage: front stabilizer – rear stabilizer – stabilized				*5800	*5800	*5800	*4600	*4600	*4600	*3800	*3800	3450	*3200	*3200	*3200
1500 mm	Undercarriage: front empty – rear dozer – free on wheels				5450	3700	3350	3650	2500	2300	2650	1850	1700	2450	1700	1550
	Undercarriage: front empty – rear dozer – stabilized				5450	*6650	3750	3600	*4900	2550	2650	3950	1900	2450	*3400	1750
	Undercarriage: front dozer – rear stabilizer – stabilized				*6650	*6650	5900	*4900	*4900	3900	*3950	*3950	2850	*3400	*3400	2650
	Undercarriage: front stabilizer – rear stabilizer – stabilized				*6650	*6650	*6650	*4900	*4900	4700	*3950	*3950	3400	*3400	*3400	3150
0 mm	Undercarriage: front empty – rear dozer – free on wheels				5250	3500	3150	3500	2400	2200	2600	1800	1650	2500	1750	1600
	Undercarriage: front empty – rear dozer – stabilized				5250	*6800	3550	3500	*5000	2450	2600	*3800	1850	2500	*3650	1750
	Undercarriage: front dozer – rear stabilizer – stabilized				*6800	*6800	5700	*5000	*5000	3800	*3800	*3800	2800	*3650	*3650	2700
	Undercarriage: front stabilizer – rear stabilizer – stabilized				*6800	*6800	*6800	*5000	*5000	4550	*3800	*3800	3350	*3650	*3650	3200
-1500 mm	Undercarriage: front empty – rear dozer – free on wheels	*7350	6200	5450	5200	3400	3100	3450	2350	2150				2750	1850	1700
	Undercarriage: front empty – rear dozer – stabilized	*7350	*7350	6300	5150	*6300	3500	3450	*4650	2400				2700	*3500	1900
	Undercarriage: front dozer – rear stabilizer – stabilized	*7350	*7350	*7350	*6300	*6300	5650	*4650	*4650	3750				*3500	*3500	2950
	Undercarriage: front stabilizer – rear stabilizer – stabilized	*7350	*7350	*7350	*6300	*6300	*6300	*4650	*4650	4500				*3500	*3500	*3500
-3000 mm	Undercarriage: front empty – rear dozer – free on wheels				*5000	3450	3100	3500	2400	2150				*3200	2250	2050
	Undercarriage: front empty – rear dozer – stabilized				*5000	*5000	3500	3500	*3500	2450				*3200	*3200	2300
	Undercarriage: front dozer – rear stabilizer – stabilized				*5000	*5000	*5000	*3500	*3500	*3500				*3200	*3200	*3200
	Undercarriage: front stabilizer – rear stabilizer – stabilized				*5000	*5000	*5000	*3500	*3500	*3500				*3200	*3200	*3200

\*Limited by hydraulic rather than tipping load.

Oscillating axle needs to be locked. Weight of all lifting accessories must be subtracted from the lifting capacities. All lift capacities calculated and rated per ISO 10567:2007. Rated loads do not exceed 87% of hydraulic lift capacity or 75% of tipping load. Heavy Lift Function ON. Lifting capacities are based on the machine standing on a firm uniform supporting surface. The load point is the center line of the bucket pivot mounting pin on the stick. Lift capacity is calculated with VA cylinder completely extracted. The use of a work tool attachment point to handle/lift objects, could affect the machine lift performance.

Always refer to the appropriate Operation and Maintenance Manual for specific product information.

# M314 Wheeled Excavator Specifications

## Lift Capacities – Variable Adjustable Boom (16'6"), 9'6" Industrial Stick

All values are in lb, work tool: none, bucket cylinder and bucket linkage installed, counterweight: 6,834 lb, heavy lift function on.

		Load at maximum reach (sticknose/bucket pin)			Load over front			Load over rear			Load over side			Load point height					
	Undercarriage configuration	10 ft			15 ft			20 ft			25 ft								
																	ft		
25 ft	Undercarriage: front empty – rear dozer – free on wheels				*9,200	*9,200	8,700										*7,800	7,800	7,200
	Undercarriage: front empty – rear dozer – stabilized				*9,200	*9,200	*9,200										*7,800	*7,800	*7,800
	Undercarriage: front dozer – rear stabilizer – stabilized				*9,200	*9,200	*9,200										*7,800	*7,800	*7,800
	Undercarriage: front stabilizer – rear stabilizer – stabilized				*9,200	*9,200	*9,200										*7,800	*7,800	*7,800
20 ft	Undercarriage: front empty – rear dozer – free on wheels				*9,200	*9,200	8,700	8,500	6,000	5,600							*7,000	5,300	4,900
	Undercarriage: front empty – rear dozer – stabilized				*9,200	*9,200	*9,200	8,500	*8,500	6,100							*7,000	*7,000	5,400
	Undercarriage: front dozer – rear stabilizer – stabilized				*9,200	*9,200	*9,200	*8,500	*8,500	*8,500							*7,000	*7,000	*7,000
	Undercarriage: front stabilizer – rear stabilizer – stabilized				*9,200	*9,200	*9,200	*8,500	*8,500	*8,500							*7,000	*7,000	*7,000
15 ft	Undercarriage: front empty – rear dozer – free on wheels				*10,100	9,200	8,400	8,400	5,900	5,500							6,200	4,400	4,000
	Undercarriage: front empty – rear dozer – stabilized				*10,100	*10,100	9,300	8,400	*9,200	6,000							6,200	*6,800	4,500
	Undercarriage: front dozer – rear stabilizer – stabilized				*10,100	*10,100	*10,100	*9,200	*9,200	9,000							*6,800	*6,800	6,700
	Undercarriage: front stabilizer – rear stabilizer – stabilized				*10,100	*10,100	*10,100	*9,200	*9,200	*9,200							*6,800	*6,800	*6,800
10 ft	Undercarriage: front empty – rear dozer – free on wheels				12,500	8,600	7,800	8,100	5,700	5,200	5,900	4,100	3,800	5,600	3,900	3,600	3,900	3,700	3,400
	Undercarriage: front empty – rear dozer – stabilized				12,400	*12,600	8,700	8,100	*10,000	5,800	5,800	*8,200	4,200	5,600	*7,000	4,000	*7,000	*7,000	4,000
	Undercarriage: front dozer – rear stabilizer – stabilized				*12,600	*12,600	*12,600	*10,000	*10,000	8,700	*8,200	*8,200	6,300	*7,000	*7,000	6,000	*7,000	*7,000	6,000
	Undercarriage: front stabilizer – rear stabilizer – stabilized				*12,600	*12,600	*12,600	*10,000	*10,000	*10,000	*8,200	*8,200	7,400	*7,000	*7,000	*7,000	*7,000	*7,000	*7,000
5 ft	Undercarriage: front empty – rear dozer – free on wheels				11,800	8,000	7,200	7,800	5,400	4,900	5,700	4,000	3,600	5,400	3,700	3,400	3,700	3,500	3,200
	Undercarriage: front empty – rear dozer – stabilized				11,700	*14,300	8,100	7,800	*10,600	5,500	5,700	8,500	4,100	5,400	*7,500	3,800	*7,500	*7,500	3,800
	Undercarriage: front dozer – rear stabilizer – stabilized				*14,300	*14,300	12,800	*10,600	*10,600	8,400	*8,500	*8,500	6,100	*7,500	*7,500	5,800	*7,500	*7,500	5,800
	Undercarriage: front stabilizer – rear stabilizer – stabilized				*14,300	*14,300	*14,300	*10,600	*10,600	10,100	*8,500	*8,500	7,300	*7,500	*7,500	6,900	*7,500	*7,500	6,900
0 ft	Undercarriage: front empty – rear dozer – free on wheels				11,300	7,500	6,800	7,600	5,200	4,700	5,600	3,900	3,500	5,500	3,800	3,500	3,800	3,500	3,200
	Undercarriage: front empty – rear dozer – stabilized				11,300	*14,800	7,700	7,600	*10,800	5,300	5,600	*8,200	4,000	5,500	*8,000	3,900	*8,000	*8,000	3,900
	Undercarriage: front dozer – rear stabilizer – stabilized				*14,800	*14,800	12,300	*10,800	*10,800	8,200	*8,200	*8,200	6,000	*8,000	*8,000	5,900	*8,000	*8,000	5,900
	Undercarriage: front stabilizer – rear stabilizer – stabilized				*14,800	*14,800	*14,800	*10,800	*10,800	9,800	*8,200	*8,200	7,200	*8,000	*8,000	7,100	*8,000	*8,000	7,100
-5 ft	Undercarriage: front empty – rear dozer – free on wheels	*16,700	13,400	11,700	11,200	7,400	6,700	7,500	5,100	4,600				6,000	4,100	3,800	4,100	3,800	3,500
	Undercarriage: front empty – rear dozer – stabilized	*16,700	*16,700	13,600	11,100	*13,600	7,500	7,400	*10,000	5,200				6,000	*7,700	4,200	*7,700	*7,700	4,200
	Undercarriage: front dozer – rear stabilizer – stabilized	*16,700	*16,700	*16,700	*13,600	*13,600	12,100	*10,000	*10,000	8,100				*7,700	*7,700	6,500	*7,700	*7,700	6,500
	Undercarriage: front stabilizer – rear stabilizer – stabilized	*16,700	*16,700	*16,700	*13,600	*13,600	*13,600	*10,000	*10,000	9,700				*7,700	*7,700	*7,700	*7,700	*7,700	*7,700
-10 ft	Undercarriage: front empty – rear dozer – free on wheels				*10,700	7,500	6,700	*7,300	5,100	4,700				*7,000	5,000	4,600	5,000	4,600	4,200
	Undercarriage: front empty – rear dozer – stabilized				*10,700	*10,700	7,600	*7,300	*7,300	5,300				*7,000	*7,000	5,100	*7,000	*7,000	5,100
	Undercarriage: front dozer – rear stabilizer – stabilized				*10,700	*10,700	*10,700	*7,300	*7,300	*7,300				*7,000	*7,000	*7,000	*7,000	*7,000	*7,000
	Undercarriage: front stabilizer – rear stabilizer – stabilized				*10,700	*10,700	*10,700	*7,300	*7,300	*7,300				*7,000	*7,000	*7,000	*7,000	*7,000	*7,000

\*Limited by hydraulic rather than tipping load.

Oscillating axle needs to be locked. Weight of all lifting accessories must be subtracted from the lifting capacities. All lift capacities calculated and rated per ISO 10567:2007. Rated loads do not exceed 87% of hydraulic lift capacity or 75% of tipping load. Heavy Lift Function ON. Lifting capacities are based on the machine standing on a firm uniform supporting surface. The load point is the center line of the bucket pivot mounting pin on the stick. Lift capacity is calculated with VA cylinder completely extracted. The use of a work tool attachment point to handle/lift objects, could affect the machine lift performance.

Always refer to the appropriate Operation and Maintenance Manual for specific product information.

# M314 Wheeled Excavator Specifications

## Standard and Optional Equipment

Standard and optional equipment may vary. Consult your Cat dealer for details.

	Standard	Optional		Standard	Optional
<b>ENGINE</b>			<b>HYDRAULIC SYSTEM</b>		
Cat C4.4 Single Turbo diesel engine (meets Tier 4 Final/Stage V emission standards)	✓		Boom, stick and bucket drift reduction valves	✓	
Power mode selector	✓		Boom/stick lowering check valves		✓
One-touch low idle with automatic engine speed control	✓		Overload warning	✓	
Automatic engine idle shutdown	✓		Electronic main control valve	✓	
Work up to 3000 m (9,842 ft) above sea level without engine power de-rating	✓		Automatic hydraulic oil warm up	✓	
52° C (125° F) high-ambient cooling capacity	✓		Element type main hydraulic filter	✓	
Cold starting capability for -18° C (0° F)	✓		One-slider joysticks		✓
Double element air filter with integrated precleaner	✓		Two-slider joysticks		✓
Electric fuel priming pump	✓		Advanced Tool Control (one/two way high-pressure flow)		✓
Engine driven fan with fluid temperature controlled variable fan speed	✓		Second high pressure auxiliary circuit (one/two way high-pressure flow)		✓
Biodiesel capability up to B20	✓		Medium pressure auxiliary circuit (one/two way medium-pressure flow)		✓
			Heavy lift mode	✓	
			Quick coupler circuit for Cat Pin Grabber and CW-type coupler		✓
			SmartBoom™		✓
			Ride control		✓
			Cat TRS support		✓
			Joystick steering		✓
			Separate dedicated swing pump	✓	
			Automatic swing brake	✓	
			Cat BIO HYDO Advanced biodegradable hydraulic oil		✓
			Adjustable hydraulic aggressiveness	✓	
			Electronic pattern changer	✓	

(continued on next page)

# M314 Standard and Optional Equipment

## Standard and Optional Equipment *(continued)*

Standard and optional equipment may vary. Consult your Cat dealer for details.

	Standard	Optional		Standard	Optional
<b>UNDERCARRIAGE AND STRUCTURES</b>			<b>BOOM, STICKS AND LINKAGES</b>		
All wheel drive	✓		5028 mm (16'6") Variable Adjustable boom	✓	
Automatic brake/axle lock	✓		2200 mm (7'3") stick		✓
Creeper speed	✓		2500 mm (8'2") stick		✓
Electronic swing and travel lock	✓		2900 mm (9'6") Drop Nose stick without bucket linkage <sup>(2)</sup>		✓
Heavy-duty axles, advanced disc brake system and travel motor, adjustable braking force	✓		Bucket linkage, 312-family with lifting eye		✓
Oscillating front axle, lockable, with remote greasing point	✓		Bucket linkage, 312-family without lifting eye		✓
10.00-20 16 PR, dual tires		✓	<b>ELECTRICAL SYSTEM</b>		
315/70R22.5, no gap dual tires <sup>(1)</sup>		✓	LED lights on boom and cab	✓	
445/70R 19.5, single tires		✓	LED lights on chassis (left-hand, right-hand) and counterweight		✓
10.00-20, dual, solid rubber tires		✓	Programmable time-delay LED working lights	✓	
Steps with tool box in undercarriage (left and right)	✓		Rooding and indicator lights, front and rear	✓	
Two-piece drive shaft	✓		Maintenance free batteries	✓	
Two speed hydrostatic transmission	✓		Centralized electrical disconnect switch	✓	
Rear blade (radial) undercarriage		✓	Electrical refueling pump		✓
Rear blade (radial)/front outrigger undercarriage		✓			
Rear outrigger/front blade (radial) undercarriage		✓			
Rear outrigger/front outrigger undercarriage		✓			
Fenders, front and rear, synthetic		✓			
Travel restraint bracket for grapple/clamshell		✓			
3100 kg (6,834 lb) counterweight	✓				

*(continued on next page)*

<sup>(1)</sup> Available in all regions except North America.

<sup>(2)</sup> Available in Europe and North America only.

# M314 Standard and Optional Equipment

## Standard and Optional Equipment *(continued)*

Standard and optional equipment may vary. Consult your Cat dealer for details.

	Standard	Optional		Standard	Optional
<b>SERVICE AND MAINTENANCE</b>			<b>TECHNOLOGY</b>		
Sampling ports for Scheduled Oil Sampling (S·O·S <sup>SM</sup> )	✓		Cat Product Link™	✓	
Automatic lubrication system for implement and swing system*		✓	Remote Flash capability	✓	
<b>SAFETY AND SECURITY</b>			Remote Troubleshoot capability	✓	
Rear and right-side-view cameras	✓				
360° visibility		✓			
Wide angle mirrors	✓				
Travel alarm		✓			
Signal/warning horn	✓				
Rotating beacon on cab and chassis		✓			
Cat Asset tracker		✓			
Neutral lever (lock out) for all controls	✓				
Ground-level accessible secondary engine shutoff switch in cab	✓				
Bluetooth® receiver	✓				
Anti-skid plate and countersunk bolts on service platform	✓				

## M314 Attachments

### Dealer Installed Kits and Attachments

Attachments may vary. Consult your Cat dealer for details.

#### CAB

- 75 mm (3") retractable seat belt

#### SAFETY AND SECURITY

- Bluetooth key fob

#### GUARDS

- Falling object guard system (not compatible with cab light cover, rain protector)
- Mesh guard full front (not compatible with cab light cover, rain protector)

# M314 Cab Options

## Cab Options

	Deluxe	Premium
Cab structure meeting ISO 12117-2 ROPS (Rollover Protective Structure) standard	●	●
Heated seat with adjustable air suspension	●	X
Heated and cooled seat with semi-automatic adjustable air suspension	X	●
Height-adjustable console, infinite with no tool	●	●
High-resolution 254 mm (10") LCD touchscreen monitor	●	●
Mechanical mirror	●	X
Electrical adjustable and heatable mirror	X	●
Automatic bi-level air conditioner	●	●
Jog dial and shortcut keys for monitor control	●	●
Keyless push-to-start engine control	●	●
51 mm (2") orange seat belt	●	●
Unfastened seat belt warning	●	●
Bluetooth integrated radio (including USB, aux port and microphone)	●	●
2 × 12V DC outlets	●	●
Document storage	●	●
Cup and bottle holders	●	●
Openable two-piece front window (laminated)	●	○
Fixed one-piece front window (P5A classified)	X	○
Parallel wiper with washer	●	●
Fixed glass skylight	●	●
LED dome lights	●	●
Foot illumination	●	●
Roller rear sunscreen	X	●
Rear window emergency exit	●	●
Washable floor mat	●	●
Beacon ready	●	●
FOGS "ready"	●	●
Vandal guards "ready"	●	●
Two LED cab lights	●	●
Rain visor	●	●

- Standard
- Optional
- X Not available

For more complete information on Cat products, dealer services, and industry solutions, visit us on the web at [www.cat.com](http://www.cat.com)

© 2020 Caterpillar  
All rights reserved

Materials and specifications are subject to change without notice. Featured machines in photos may include additional equipment. See your Cat dealer for available options.

CAT, CATERPILLAR, LET'S DO THE WORK, their respective logos, "Caterpillar Corporate Yellow," the "Power Edge" and Cat "Modern Hex" trade dress as well as corporate and product identity used herein, are trademarks of Caterpillar and may not be used without permission.

AEXQ2743-02 (11-2020)  
Replaces AEXQ2743-01  
Build Number: 07A  
(N Am, Eur, Aus-NZ, S Korea)

