



**STRONG PARTNERS.
TOUGH TRUCKS.™**

FORTENS™



H8.0-9.0FT SERIES TECHNICAL GUIDE



WWW.HYSTER.COM

> H8.OFT9 SPECIFICATIONS

				HYSTER			HYSTER			HYSTER				
				H8.OFT9			H8.OFT9			H8.OFT9				
GENERAL	1-1	Manufacturer		HYSTER			HYSTER			HYSTER				
	1-2	Model designation		H8.OFT9			H8.OFT9			H8.OFT9				
		Model			FORTENS™ Advance			FORTENS™ Advance			FORTENS™ Advance			
		Engine			GM 5.7L			Kubota 3.8L 55kW			Kubota 3.8L 82kW			
		Transmission			DuraMatch™ 3			DuraMatch™ 3			DuraMatch™ 3			
					3-speed			3-speed			3-speed			
	1-3	Powertrain / drivetrain		LPG			Diesel			Diesel				
	1-4	Operator type		Seated			Seated			Seated				
	1-5	Rated capacity / rated load	Q	kg	8,000			8,000			8,000			
1-6	Load centre distance	c	mm	900			900			900				
1-8	Load distance	x	mm	613.5			613.5			613.5				
1-9	Wheelbase	y	mm	2,450			2,450			2,450				
WEIGHT	2-1	Service weight		kg			12,417			12,417				
	2-2	Axle loading with load, front / rear		kg	18,470	5,365	18,470	5,365	18,470	5,365	18,470	5,365		
	2-3	Axle loading without load, front / rear		kg	1,947	7,052	1,947	7,052	1,947	7,052	1,947	7,052		
WHEELS	3-1	Tyre type		Pneumatic			Pneumatic			Pneumatic				
	3-2	Tyre size, front		8.25x15 14PR			8.25x15 14PR			8.25x15 14PR				
	3-3	Tyre size, rear		8.25x15 14PR			8.25x15 14PR			8.25x15 14PR				
	3-5	Wheels, number front / rear (x = driven wheels)		x4	2	x4	2	x4	2	x4	2			
	3-6	Tread, front	b ₁₀	mm	2,003			2,003			2,003			
	3-7	Tread, rear	b ₁₁	mm	1,535			1,535			1,535			
	DIMENSIONS	4-1	Mast tilt, forward / backward		α/β	deg	5°	9°	5°	9°	5°	9°		
4-2		Height, mast lowered		h ₁	mm	2,712			2,712			2,712		
4-3		Free lift (1)		h ₂	mm	105			105			105		
4-4		Lift (1)		h ₃	mm	3,065			3,065			3,065		
4-5		Height, mast extended (2)		h ₄	mm	4,239			4,239			4,239		
4-7		Height of overhead guard (cabin) (3)		h ₆	mm	2,531			2,531			2,531		
4-8		Seat height to SIP (4)		h ₇	mm	1,558			1,558			1,558		
4-12		Coupling height		h ₁₀	mm	474			474			474		
4-19		Overall length		l ₁	mm	5,238			5,238			5,238		
4-20		Length to face of forks		l ₂	mm	4,038			4,038			4,038		
4-21		Overall width		b ₂	mm	2,239			2,239			2,239		
4-22		Fork dimensions ISO 2331		s/e/l	mm	60	150	1,200	60	150	1,200	60	150	1,200
4-23		Fork carriage type		IV A			IV A			IV A				
4-24		Fork carriage width (5)		b ₃	mm	2,030			2,030			2,030		
4-31		Ground clearance, laden, below mast		m ₁	mm	173			173			173		
4-32		Ground clearance, centre of wheelbase		m ₂	mm	253			253			253		
4-34-1	Aisle width with pallets 1 000 long x 1 200 crossways		Ast	mm	5,607.5			5,607.5			5,607.5			
4-34-2	Aisle width with pallets 800 wide x 1 200 crossways		Ast	mm	5,807.5			5,807.5			5,807.5			
4-35	Outside turning radius		W _a	mm	3,794			3,794			3,794			
4-36	Internal turning radius		b ₁₃	mm	362			362			362			
PERFORMANCE	5-1	Travel speed, with / without load		km/h	21.4	22.4	21.4	22.4	21.4	22.4				
	5-2	Lifting speed, with / without load		m/s	0.39	0.41	0.31	0.37	0.39	0.41				
	5-3	Lowering speed with / without load		m/s	0.41	0.37	0.41	0.37	0.41	0.37				
	5-5	Drawbar pull, with / without load		N	53,379	31,568	52,570	31,568	53,379	31,568				
	5-7	Gradeability, with / without load		%	27	26	26	26	27	26				
	5-9	Acceleration time, with / without load		sec	On request			On request			On request			
	5-10	Service brake		Hydraulic			Hydraulic			Hydraulic				
7-5	Fuel consumption according to VDI cycle		10.4			10.4			11.2					

H9.OFT6 SPECIFICATIONS <

				HYSTER			HYSTER			HYSTER				
				H9.OFT6			H9.OFT6			H9.OFT6				
GENERAL	1-1	Manufacturer		HYSTER			HYSTER			HYSTER				
	1-2	Model designation		H9.OFT6			H9.OFT6			H9.OFT6				
		Model			FORTENS™ Advance			FORTENS™ Advance			FORTENS™ Advance			
		Engine			GM 5.7L			Kubota 3.8L 55kW			Kubota 3.8L 82kW			
		Transmission			DuraMatch™ 3			DuraMatch™ 3			DuraMatch™ 3			
					3-speed			3-speed			3-speed			
	1-3	Powertrain / drivetrain		LPG			Diesel			Diesel				
	1-4	Operator type		Seated			Seated			Seated				
	1-5	Rated capacity / rated load	Q	kg	9,000			9,000			9,000			
1-6	Load centre distance	c	mm	900			900			900				
1-8	Load distance	x	mm	613.5			613.5			613.5				
1-9	Wheelbase	y	mm	2,450			2,450			2,450				
WEIGHT	2-1	Service weight		kg			11,956			11,956				
	2-2	Axle loading with load, front / rear		kg	18,798	5,340	18,798	5,340	18,798	5,340				
	2-3	Axle loading without load, front / rear		kg	2,158	6,616	2,158	6,616	2,158	6,616				
WHEELS	3-1	Tyre type		Pneumatic			Pneumatic			Pneumatic				
	3-2	Tyre size, front		8.25x15 14PR			8.25x15 14PR			8.25x15 14PR				
	3-3	Tyre size, rear		8.25x15 14PR			8.25x15 14PR			8.25x15 14PR				
	3-5	Wheels, number front / rear (x = driven wheels)		x4	2	x4	2	x4	2	x4	2			
	3-6	Tread, front	b ₁₀	mm	2,003			2,003			2,003			
	3-7	Tread, rear	b ₁₁	mm	1,535			1,535			1,535			
	DIMENSIONS	4-1	Mast tilt, forward / backward		α/β	deg	5°	9°	5°	9°	5°	9°		
4-2		Height, mast lowered		h ₁	mm	2,712			2,712			2,712		
4-3		Free lift (1)		h ₂	mm	105			105			105		
4-4		Lift (1)		h ₃	mm	3,065			3,065			3,065		
4-5		Height, mast extended (2)		h ₄	mm	4,239			4,239			4,239		
4-7		Height of overhead guard (cabin) (3)		h ₆	mm	2,531			2,531			2,531		
4-8		Seat height to SIP (4)		h ₇	mm	1,558			1,558			1,558		
4-12		Coupling height		h ₁₀	mm	474			474			474		
4-19		Overall length		l ₁	mm	5,238			5,238			5,238		
4-20		Length to face of forks		l ₂	mm	4,038			4,038			4,038		
4-21		Overall width		b ₂	mm	2,239			2,239			2,239		
4-22		Fork dimensions ISO 2331		s/e/l	mm	60	150	1,200	60	150	1,200	60	150	1,200
4-23		Fork carriage type		IV A			IV A			IV A				
4-24		Fork carriage width (5)		b ₃	mm	2,030			2,030			2,030		
4-31		Ground clearance, laden, below mast		m ₁	mm	173			173			173		
4-32		Ground clearance, centre of wheelbase		m ₂	mm	253			253			253		
4-34-1	Aisle width with pallets 1 000 long x 1 200 crossways		Ast	mm	5,607.5			5,607.5			5,607.5			
4-34-2	Aisle width with pallets 800 wide x 1 200 crossways		Ast	mm	5,807.5			5,807.5			5,807.5			
4-35	Outside turning radius		W _a	mm	3,794			3,794			3,794			
4-36	Internal turning radius		b ₁₃	mm	362			362			362			
PERFORMANCE	5-1	Travel speed, with / without load		km/h	21.4	22.4	21.4	22.4	21.4	22.4				
	5-2	Lifting speed, with / without load		m/s	0.43	0.45	0.19	0.42	0.43	0.45				
	5-3	Lowering speed with / without load		m/s	0.41	0.37	0.41	0.37	0.41	0.37				
	5-5	Drawbar pull, with / without load		N	53,379	31,421	52,668	31,421	53,379	31,421				
	5-7	Gradeability, with / without load		%	27	27	25	27	27	27				
	5-9	Acceleration time, with / without load		sec	On request			On request			On request			
	5-10	Service brake		Hydraulic			Hydraulic			Hydraulic				
7-5	Fuel consumption according to VDI cycle		10.7			10.7			11.5					

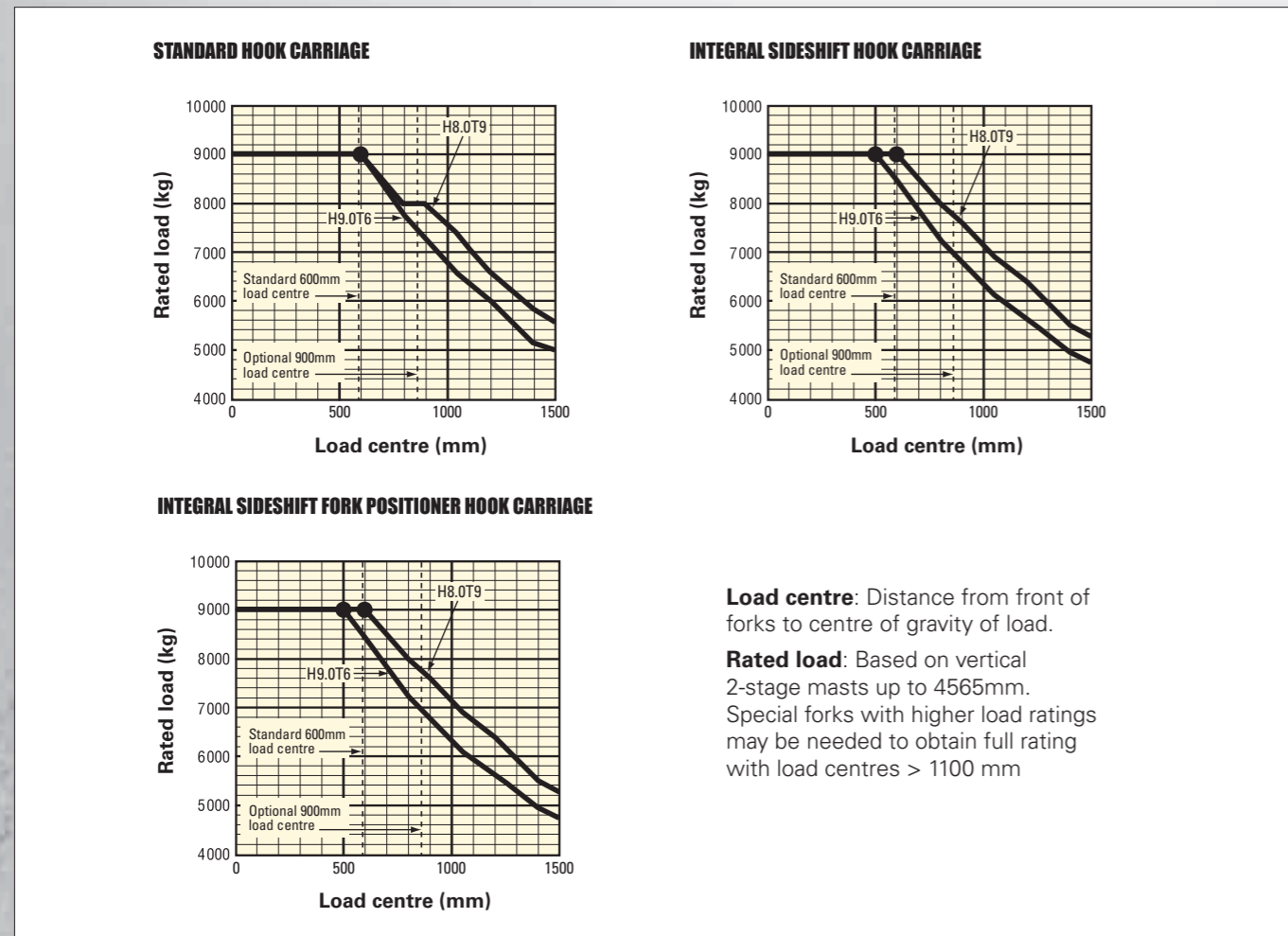
GENERAL		HYSTER		HYSTER		HYSTER	
1-1	Manufacturer			HYSTER		HYSTER	
1-2	Model designation	H8.0-9.0FT		H8.0-9.0FT		H8.0-9.0FT	
1-3	Powertrain / drivetrain	LPG		Diesel		Diesel	

ENGINE		GM 5.7L 99KW		KUBOTA V3800 55KW		KUBOTA V3800 82KW	
7-1	Engine manufacturer / model	Stage V		Stage V		Stage V	
7-1a	EPA / CE compliance						
7-2	Engine power output according to ISO 1585	kW		99		82	
7-3	Rated speed	min ⁻¹		2,400		2,400	
7-3-1	Engine torque @rpm (1/min)	Nm/min ⁻¹		422@1600		308@1400	
7-4	Number of cylinders / displacement	# / cm ³		8 / 5735		4 / 3769	
7-10	Battery voltage, rated capacity	V / Ah		12 / 210		24 / 210	

DRIVE		Type / #		Hydrodynamic transmission	
8-1	Drive control / Transmission			Hydrodynamic transmission	
8-2	Transmission manufacturer / type	Type / #		DANA	
8-6	Wheel drive / drive axle manufacturer / type	Type / #		DANA	
8-11	Service brake	Type		Hydraulic	
8-12	Parking brake	Type		Hand lever	

MISC		bar		155		155		155	
10-1	Operating pressure for attachments	bar		155		155		155	
10-2	Oil volume for attachments (6)	l/m		93		93		93	
10-3	Hydraulic tank capacity	l		71.7		71.7		71.7	
10-4	Fuel tank capacity	l		74.8		74.8		74.8	
10-7	Sound pressure level at driver's seat (without / with cab) (7)	Lpaz	dB(A)	82	79	79	79	79	79
10-7-1	Sound power level during the working cycle (7)	Lwaz	dB	103		98		101	
10-7	Towing coupling, model / type			Yes / Pin		Yes / Pin		Yes / Pin	

➤ **RATED CAPACITIES**



PERFORMANCE	STD	OPT
Kubota 3.8L (55KW) - Stage V engine (diesel)	X	
Kubota 3.8L (82KW) - Stage V engine (diesel)		X
GM 5.7L - Stage V engine (lpg)		X
Powertrain Protection System with engine shutdown		X
High air intake with precleaner	X	
Upswept exhaust	X	
Horizontal Exhaust with Catalytic Converter	X	
DuraMatch™ 3 speed transmission		X
Oil-immersed brakes	X	
DRIVE	STD	OPT
Traction speed limiter pre-set to 13km/h (adjustable)		X
Multiple traction speed limit 13/6 km/h		
Multiple traction speed limit 13/8 km/h		X
Multiple traction speed limit 13/10 km/h		X
Traction speed limit with carriage raised (500mm)		X
8.25 x 15-14 Pneumatic Drive Tyres (dual tread)	X	
8.25 R15 Pneumatic Radial Drive Tyres (dual tread)		X
300 x 15 Pneumatic Shaped Solid Drive Tyres (Dual Tread)		X
300 x 15 Non-Marking Pneumatic Shaped Solid Drive Tyres (Dual Tread)		X
8.25 x 15-14 Pneumatic Steer Tyres	X	
8.25 R15 Pneumatic Radial Steer Tyres		X
300 x 15 Pneumatic Shaped Solid Steer Tyres		X
300 x 15 Non-Marking Pneumatic Shaped Solid Steer Tyres		X
LIFT	STD	OPT
Auto speed hydraulics		X
2 Stage limited free lift mast	X	
3 Stage full free lift mast		X
5° Forward / 9° Back Mast Tilt	X	
5° Forward / 6° Back Mast Tilt		X
9° Forward / 5° Back Mast Tilt		X
Hydraulic accumulator		X
HANDLING	STD	OPT
2030mm Hook Type Carriage	X	
2030mm Integral Side Shift Carriage		X
2030mm Integral Side Shift Carriage with Fork Positioner		X
2030mm Integral Side Shift Carriage with Fork Positioner		X
Base Carriage for Integral Attachment		X
1220mm High Load Backrest	X	
1200 x 200 x 65mm Hook Type Forks	X	
Different other type forks		X
ERGONOMICS	STD	OPT
2531mm overhead guard	X	
Operator pre-shift electronic checklist		X
Full steel cab		X
Full steel cab with air conditioning		X
Full suspension vinyl seat	X	
Full suspension swivel vinyl seat		X
Full suspension cloth seat		X
Full suspension cloth swivel seat		X
Full suspension vinyl seat with high backrest lumbar support and headrest		X
Full suspension cloth seat with high backrest lumbar support and headrest		X
Grammer air suspension vinyl seat		X
Grammer air suspension cloth seat		X
Standard seat belt	X	
HI VIS red seat belt		X
HI VIS red seat belt with interlock		X
Air conditioning		X
Dash mounted 12V auxiliary power outlet		X
Steering Wheel with Spinner Knob	X	
TouchPoint™ mini lever hydraulic controls	X	
Joystick		X
Directional lever	X	
Integrated directional switch		X
MONOTROL™		X
Load weight display		X

VISIBILITY	STD	OPT
Dual mirrors side view		X
Rear mounted color camera with LCD display		X
2 front and 1 rear LED work lights with stop, tail, indicator & reverse lights		X
2 front and 1 rear halogen work lights with stop, tail, indicator & reverse lights	X	
LED work light protection		X
Mast mounted LED lights		X
Hazard warning lights		X
OPERATION	STD	OPT
Acme Screw Connector (Non German, UK)		X
Union Nut with Handle Connector (German, Balkans, Austria)		X
Counterweight Mounted LPG Bracket		X
Sealed Alternator		X
Audible reverse alarm		X
Amber strobe light		X
Pedestrian awareness light (P.A.L.)		X
Front pedestrian awareness light (P.A.L.)		X
Keyswitch start	X	
Operator password start		X
Push button start with operator password		X
Single Pedal Inch Brake		X
Push button park brake		X
Battery disconnect switch		X
System monitoring package	X	
Premium monitoring package		X
Seat switch activated engine, lights and display shutdown system		X
Signal activated engine shutdown system		X
Impact monitor with 30s shutdown		X
Impact monitor with immediate shutdown		X
Full underbody mesh belly pan		X
Greasing system for base truck		X
Optical fuel level sensor		X
Pressure fuel level sensor		X
2 front / 1 rear lifting eyes		X
Aftermarket-ready telemetry kit		X
Wireless access card reader		X
Wireless monitoring - cell		X
Wireless monitoring - wifi		X
Wireless verification		X
PACKAGES	STD	OPT
Cool Truck package which includes belly pan including brake line protection, exhaust wrap, fans in hood key activated and rubber front axle guard		X
APPEARANCE	STD	OPT
Hyster yellow paint base truck	X	
Special paint colour		X
Special paint for full steel cab		X
Hazard warning striping on counterweight		X
SUPPLEMENTAL	STD	OPT
Literature pack		X
CE certification		X
12 Months / 2,000 Hours manufacturers warranty	X	
36 Months / 6,000 Hours extended warranty		X

Other options available through Special Products Engineering Department (SPED). Contact Hyster for details.

STRONG PARTNERS. TOUGH TRUCKS.™

FOR DEMANDING OPERATIONS, EVERYWHERE.

Hyster supplies a complete range of warehouse equipment, IC and electric counterbalanced trucks, container handlers and reach stackers. Hyster is committed to being much more than a lift truck supplier.

Our aim is to offer a complete partnership capable of responding to the full spectrum of material handling issues: Whether you need professional consultancy on your fleet management, fully qualified service support, or reliable parts supply, you can depend on Hyster.

Our network of highly trained dealers provides expert, responsive local support. They can offer cost-effective finance packages and introduce effectively managed maintenance programmes to ensure that you get the best possible value. Our business is dealing with your material handling needs so you can focus on the success of your business today and in the future.



HYSTER EUROPE

Centennial House, Frimley Business Park, Frimley, Surrey, GU16 7SG, England.

Tel: +44 (0) 1276 538500



www.hyster.eu



infoeurope@hyster.com



[/HysterEurope](https://www.facebook.com/HysterEurope)




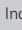
[@HysterEurope](https://twitter.com/HysterEurope)



[/HysterEurope](https://www.youtube.com/HysterEurope)



HYSTER-YALE UK LIMITED trading as Hyster Europe. Registered Address: Centennial House, Building 4.5, Frimley Business Park, Frimley, Surrey GU16 7SG, United Kingdom. Registered in England and Wales. Company Registration Number: 02636775.

©2020 HYSTER-YALE UK LIMITED, all rights reserved. HYSTER,  STRONG PARTNERS. TOUGH TRUCKS., MONOTROL and  are trademarks of HYSTER-YALE Group, Inc. Kubota is a trademark of Kubota Corporation. Grammer is a trademark of Grammer Seating Systems Ltd.

Hyster products are subject to change without notice. Forklift trucks illustrated may feature optional equipment.